

# Zion Garden Park

## AGRICULTURAL ASSISTANCE PROGRAM



Conservation District  
of Southern Nevada



This program is funded by a grant from:

**National Association of Conservation Districts (NACD)**

in partnership with:

USDA Natural Resources Conservation Service

# CORE PARTNER ORGANIZATIONS



**Conservation District  
of Southern Nevada**  
Serving Clark County

**Conservation District of Southern Nevada**  
Program Administrator



University of Nevada  
Cooperative Extension

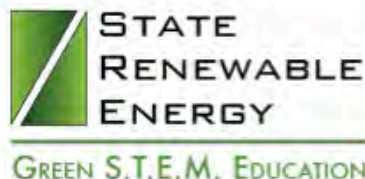
**University of Nevada Cooperative Extension**  
Garden Services & Workshop Administration



**Zion United Methodist Church**  
Garden Location & Management



**USDA – Natural Resources Conservation Service**  
Seasonal High Tunnel Development



**State Renewable Energy**  
3D Project Design & STEM Education Development



**Terra Firma Organics, Inc.**  
Composting, Soil, & Garden Services



NEVADA DIVISION OF  
**ENVIRONMENTAL  
PROTECTION**

**Nevada Division of Environmental Protection**  
Recycling, Reclamation, & Landfill Diversion



**GREEN CHIPS**

**Green Chips**  
Media





# CHOICE NEIGHBORHOOD INITIATIVE

The Choice Neighborhood Grant is giving the City of North Las Vegas and its residents the opportunity to work together to share ideas on the best ways to create beautiful and safe neighborhoods. The City would like your input. For more information, please contact the City of North Las Vegas staff, the Southern Nevada Regional Housing Authority, Nevada Partners, or Lutheran Social Services to learn more about the Choice Neighborhood Grant and how you can impact the future of your Neighborhood.

For more information on how to get involved, please contact Jim Haye at 702-633-1441 or email to [hayej@cityofnorthlasvegas.com](mailto:hayej@cityofnorthlasvegas.com).

*The future of Your Neighborhood needs your input now!*







# THE BACKGROUND

- Zion United Methodist Church is in an underserved community in North Las Vegas, NV
- Designated a revitalization area by the N. Las Vegas Choice Neighborhood Initiative
- North Las Vegas & CDSN are partners in the Southern Nevada Strong Regional Plan
- Bordered by the highest food insecurity zones in the valley: 27.5%, 23.2%, 21.5%
- The garden is located in a Low Income (LI), Low Access (LA) food desert
- The Las Vegas Valley receives 4.19" of annual rainfall, 89% less than the national avg.

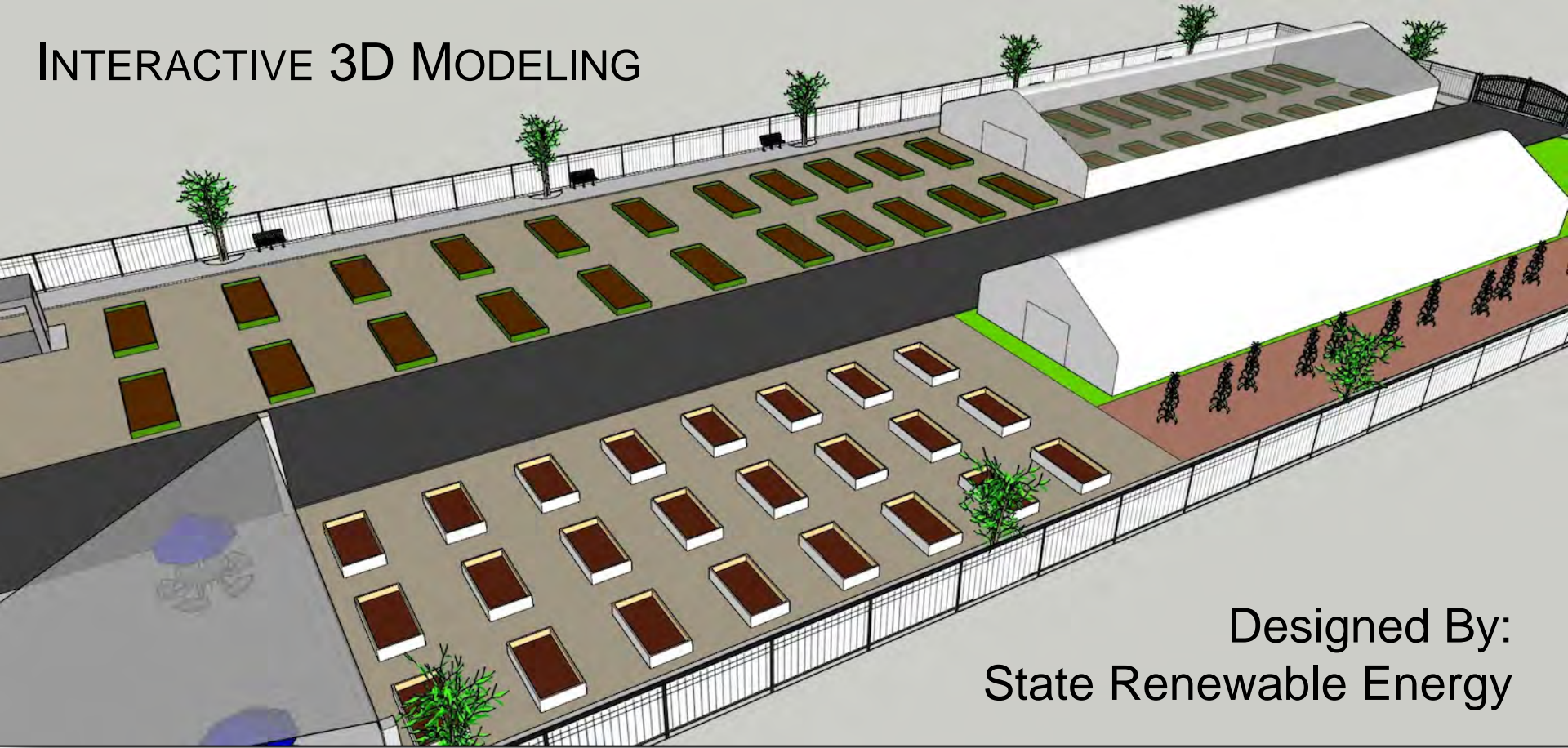


## PLANNING MEETINGS AT ZION CHURCH

- Included land surveys, 3D designing, soil testing, guest speakers, & expert analysis
- Raised garden beds, irrigation, plants, trees (fruit, nut, shade, & other pollinators)
- Fencing, pathways, benches, shade structures, hoop houses, composting area



# INTERACTIVE 3D MODELING



Designed By:  
State Renewable Energy

## GROUP COLLABORATION

- Provides a virtual environment to view, change, and adjust the design
- This also allows for mobile access to the garden and remote planning capabilities



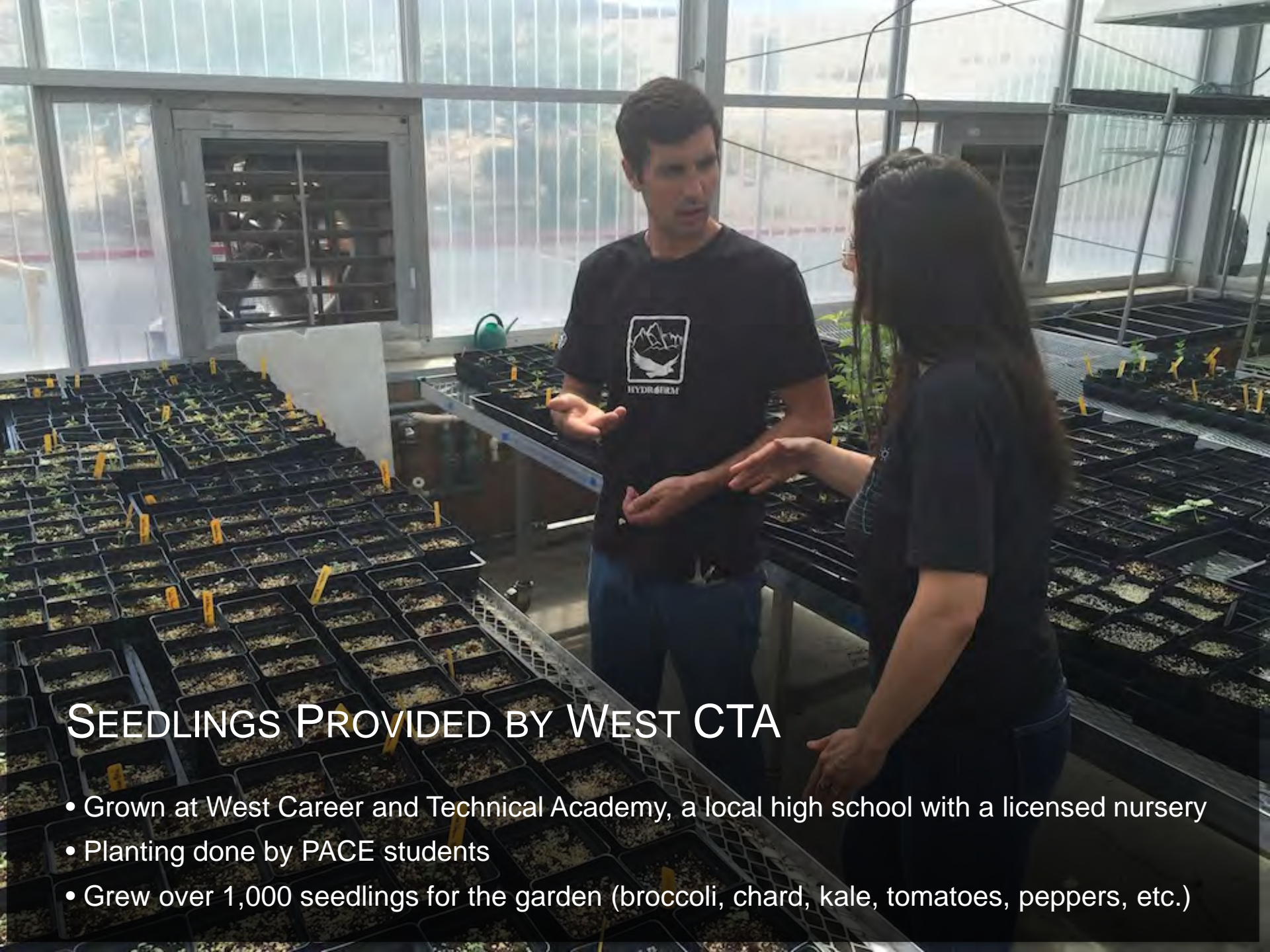




## GARDEN BED CONSTRUCTION

- Built an additional 47 raised garden beds
- The 1-acre garden area now has 64 raised beds
  - (40) are 14' by 5' and (24) are 8' by 4' and ADA accessible
- Garden features automatic irrigation from PD Landscaping
- Constructed by Zion church members with support from Nevada Partners





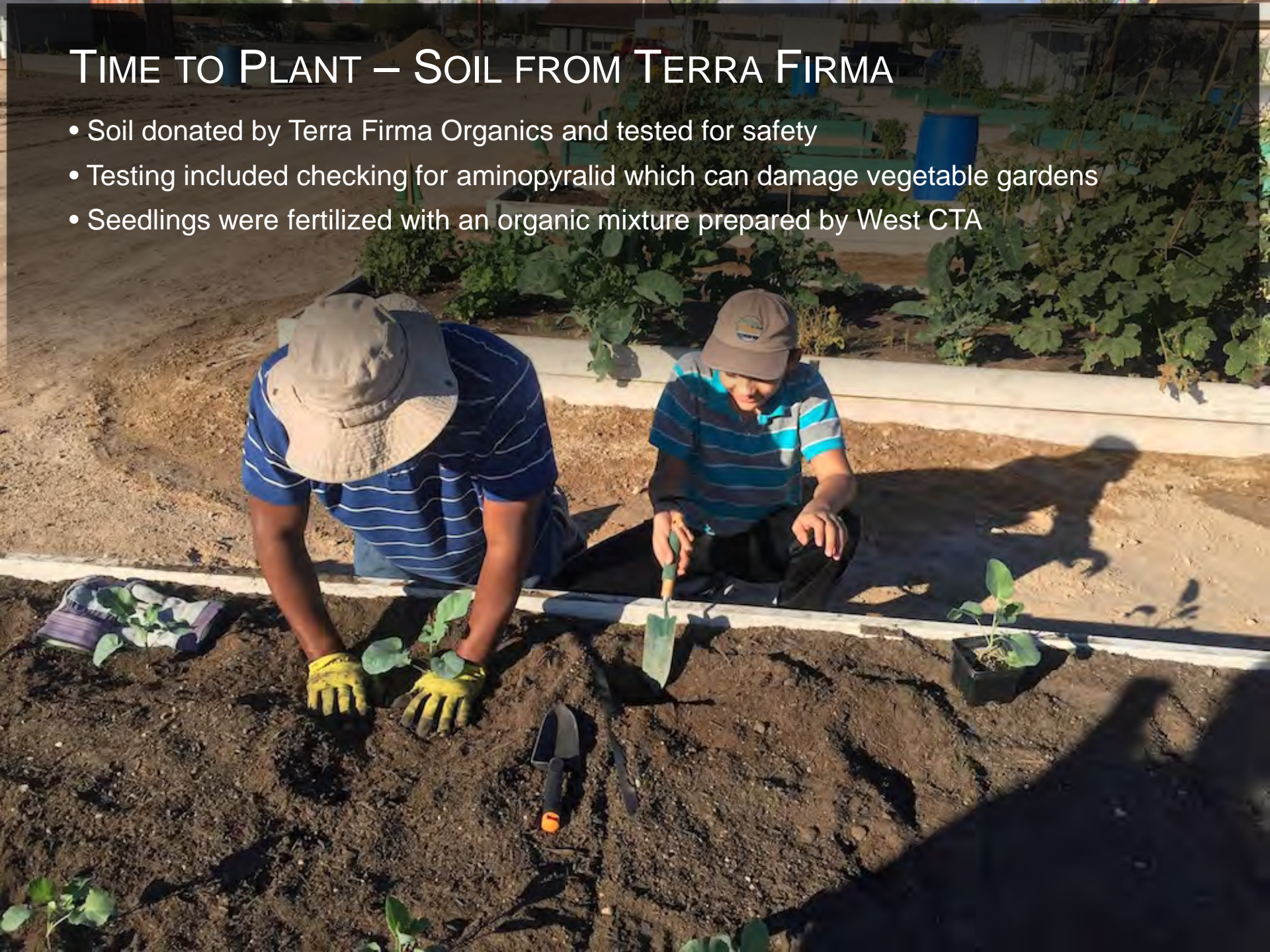
## SEEDLINGS PROVIDED BY WEST CTA

- Grown at West Career and Technical Academy, a local high school with a licensed nursery
- Planting done by PACE students
- Grew over 1,000 seedlings for the garden (broccoli, chard, kale, tomatoes, peppers, etc.)



# TIME TO PLANT – SOIL FROM TERRA FIRMA

- Soil donated by Terra Firma Organics and tested for safety
- Testing included checking for aminopyralid which can damage vegetable gardens
- Seedlings were fertilized with an organic mixture prepared by West CTA





# ZION COMMUNITY GARDEN PARK

- City of North Las Vegas donated an iron fence & permeable pathway surrounding the 1-acre garden
- They also donated a 30' by 30' shade structure and concrete for park benches
- Hoop Houses are being funded through USDA-NRCS
- Working with USDA-NRCS & NDF to obtain trees





# Harry Dodd



**Barbara Wardlaw**

## COMMUNITY OUTREACH

- Community Garden Liaison: Visiting 30 local gardens to coordinate regional data, identify challenges, and communicate successes and failures
- Web Information Technician: Compiling data and local farmer's market information, organizing video series, managing social media




# ZION COMMUNITY GARDEN PARK GRAND OPENING



- Garden beds are leased to and managed by community members for \$60 per year
- Zion Garden Team oversees the garden along with assistance from UNCE Master Gardeners
- Gave away seedlings from West CTA with purchase of raised bed at grand opening
- Assemblywoman Daniele Monroe-Moreno and Assemblyman William McCurdy attended, sponsored
- University of Nevada Cooperative Extension sponsored 30 raised beds for community members





# UNIVERSITY OF NEVADA COOPERATIVE EXTENSION

## COMMUNITY WORKSHOPS

- Veggies in Small Places
- Growing Fruit in Southern NV
- Troubleshooting your Garden
- Nutrition and Healthy Eating
- Understanding your Soils
- Chemicals in the Garden
- Diabetes Meal Planning
- Fertilizing





## COMMUNITY GARDENING & NUTRITION WORKSHOPS







CREATE A CHANGE NOW

## LIVE CHEF DEMONSTRATIONS

- Taught by local chefs
- Featuring culinary students
- Health & nutrition information
- Utilizing food from the garden
- Audience participation
- Tasting samples





## LIVE CHEF DEMONSTRATIONS







## ADDITIONAL PARTNERS & SPONSORS

West Career and Technical Academy

PD Landscaping

Nevada Partners

Impact Sand & Gravel

Star Nursery

Ahern

Home Depot

University of Nevada Las Vegas

Nevada Division of Forestry

Create a Change Now





# COMMUNITY GARDEN IS OASIS IN MIDDLE OF FOOD DESERT IN LAS VEGAS

MELISSA BLAIR | NRCS, USDA | ACTING STATE PUBLIC AFFAIRS SPECIALIST



In the middle of one of the highest food insecure neighborhoods in the City of North Las Vegas is blossoming a new source of fresh carrots, and other fruits and produce at the Zion Garden Park Community Garden. The garden is a welcome addition to the neighborhood.

"I know this is the first garden," said Shirley, a member of Zion United Methodist Church. "It was always a dream to have a garden in this area, and now it's broken glass."

The church, which celebrated its 99th anniversary in November and has about 100 members, is located in a low income, low access food desert. It is one of the 100 households without vehicles and district of the city that is more than 100 miles from the nearest grocery store.

The garden is surrounded by the three highest food insecurity rates in the city: 27.3 percent, 23.2 percent, and 21.5 percent. The city's average is 14.7 percent food insecurity rate. Food insecurity is household-level economic and social condition of limited access to food, the higher the food insecurity rate, the higher the food insecurity rate.

"People want nutritious, and affordable food and it locally," said Amber Bosket, the Project Director and Board Secretary of the Conservation District of Southern Nevada.

one of the forces behind this growing partnership. She is also owner and executive director of the Zion Garden Park Community Garden. Her husband, Corrie Bosket, who donated the design and 3D model of the garden, is a local resident.

In order to bring fresh produce to the community, the garden is how to grow and prepare their own food. The Conservation District of Southern Nevada, in partnership with Zion United Methodist Church, received an Initiative grant from the National Conservation District of Southern Nevada.

The grant, which celebrated its 99th anniversary in November and has about 100 members, is located in a low income, low access food desert. It is one of the 100 households without vehicles and district of the city that is more than 100 miles from the nearest grocery store.

The grant along with contributions from the city and the church has allowed the group to clear the land and install 40 raised garden beds, surrounded by a wrought iron fence donated by the City of North Las Vegas. The garden is also installing 24 American Disability Act (ADA) accessible paths, which are wheelchair accessible, permeable walkway, shade trees, six benches, and a composting area. The grants funds were matched two to one within three months from the start of the project.

"NACD and the conservation districts we represent work on a scale that no other conservation district can," said NACD President Lee O'Daniel at the funding announcement. "We are excited to engage the 98 percent of folks who don't necessarily produce our fuel, fiber, and food, but still can make a difference in their lives and the lives of others."

"NACD and the conservation districts we represent work on a scale that no other conservation district can," said NACD President Lee O'Daniel at the funding announcement. "We are excited to engage the 98 percent of folks who don't necessarily produce our fuel, fiber, and food, but still can make a difference in their lives and the lives of others."

The grant, which celebrated its 99th anniversary in November and has about 100 members, is located in a low income, low access food desert. It is one of the 100 households without vehicles and district of the city that is more than 100 miles from the nearest grocery store.

The grant along with contributions from the city and the church has allowed the group to clear the land and install 40 raised garden beds, surrounded by a wrought iron fence donated by the City of North Las Vegas. The garden is also installing 24 American Disability Act (ADA) accessible paths, which are wheelchair accessible, permeable walkway, shade trees, six benches, and a composting area. The grants funds were matched two to one within three months from the start of the project.

The grant along with contributions from the city and the church has allowed the group to clear the land and install 40 raised garden beds, surrounded by a wrought iron fence donated by the City of North Las Vegas. The garden is also installing 24 American Disability Act (ADA) accessible paths, which are wheelchair accessible, permeable walkway, shade trees, six benches, and a composting area. The grants funds were matched two to one within three months from the start of the project.

The grant along with contributions from the city and the church has allowed the group to clear the land and install 40 raised garden beds, surrounded by a wrought iron fence donated by the City of North Las Vegas. The garden is also installing 24 American Disability Act (ADA) accessible paths, which are wheelchair accessible, permeable walkway, shade trees, six benches, and a composting area. The grants funds were matched two to one within three months from the start of the project.

demonstration garden on backyard conservation, healthy soils, planting crops, composting, integrated pest management and healthy eating cooking classes.

The Nevada Association of Conservation Districts (NVACD) meeting in November in Las Vegas, a tour was provided of the community garden. NACD CEO Jeremy Peters was in attendance to see how the Urban Agriculture grant was being put to use.

"I am pleased to see the community support for the Zion Garden Park Agricultural Assistance Program project," said NACD CEO Jeremy Peters. "In addition to technical assistance provided through the urban agriculture conservation grant from the Conservation District of Southern Nevada, it is remarkable to see the strong level of interest and support from the community and its many partners and community members."

The NVACD at their annual banquet also recognized and awarded Zion Garden Park Agricultural Assistance Program and its partners, the 2016 Conservation Excellence in Agriculture award. The core partners include Conservation District of Southern Nevada, Zion United Methodist Church, University of Nevada Cooperative Extension, Terra Firma Organics, Inc., State Renewable Energy, Green Chips, Nevada Division of Environmental Protection and USDA-NRCS.

The University of Nevada Cooperative Extension is helping

with garden services and support. Terra Firma Organics donated all the soil for the garden. The Nevada Division of Environmental Protection is helping to promote labor and conservation by reclaiming land for use as ADA beds. The project is supported and sponsored by many additional local organizations, including West Career and Technical Academy, Pima Community College, University of Nevada Cooperative Extension, Nevada Partners, Impact Sand and Gravel, Star Nursery, Ahern, Lowe's, and the Nevada Division of Forestry. Other organizations such as the Las Vegas Culinary Academy, Create a Change Now, MGM Resorts International, Wolfgang Puck Fine Dining Group, Southern Nevada Arborist Group, and many others are looking to participate in this program. The program also supports local, federally grant-funded initiatives such as Southern Nevada Strong, City of North Las Vegas Choice Neighborhood, and City of Henderson, Local Foods, Local Places.

Ray Dotson, Nevada NRCS State Conservationist said, "The raw power of partnerships is on full display with this community based project that is led by the local leaders in conservation. The Conservation District of Southern Nevada made this happen - NRCS just followed their lead!"

Ray Dotson, Nevada NRCS State Conservationist said, "The raw power of partnerships is on full display with this community based project that is led by the local leaders in conservation. The Conservation District of Southern Nevada made this happen - NRCS just followed their lead!"

Ray Dotson, Nevada NRCS State Conservationist said, "The raw power of partnerships is on full display with this community based project that is led by the local leaders in conservation. The Conservation District of Southern Nevada made this happen - NRCS just followed their lead!"

Ray Dotson, Nevada NRCS State Conservationist said, "The raw power of partnerships is on full display with this community based project that is led by the local leaders in conservation. The Conservation District of Southern Nevada made this happen - NRCS just followed their lead!"

with garden services and support. Terra Firma Organics donated all the soil for the garden. The Nevada Division of Environmental Protection is helping to promote labor and conservation by reclaiming land for use as ADA beds. The project is supported and sponsored by many additional local organizations, including West Career and Technical Academy, Pima Community College, University of Nevada Cooperative Extension, Nevada Partners, Impact Sand and Gravel, Star Nursery, Ahern, Lowe's, and the Nevada Division of Forestry. Other organizations such as the Las Vegas Culinary Academy, Create a Change Now, MGM Resorts International, Wolfgang Puck Fine Dining Group, Southern Nevada Arborist Group, and many others are looking to participate in this program. The program also supports local, federally grant-funded initiatives such as Southern Nevada Strong, City of North Las Vegas Choice Neighborhood, and City of Henderson, Local Foods, Local Places.

Ray Dotson, Nevada NRCS State Conservationist said, "The raw power of partnerships is on full display with this community based project that is led by the local leaders in conservation. The Conservation District of Southern Nevada made this happen - NRCS just followed their lead!"

Ray Dotson, Nevada NRCS State Conservationist said, "The raw power of partnerships is on full display with this community based project that is led by the local leaders in conservation. The Conservation District of Southern Nevada made this happen - NRCS just followed their lead!"

Ray Dotson, Nevada NRCS State Conservationist said, "The raw power of partnerships is on full display with this community based project that is led by the local leaders in conservation. The Conservation District of Southern Nevada made this happen - NRCS just followed their lead!"

Ray Dotson, Nevada NRCS State Conservationist said, "The raw power of partnerships is on full display with this community based project that is led by the local leaders in conservation. The Conservation District of Southern Nevada made this happen - NRCS just followed their lead!"



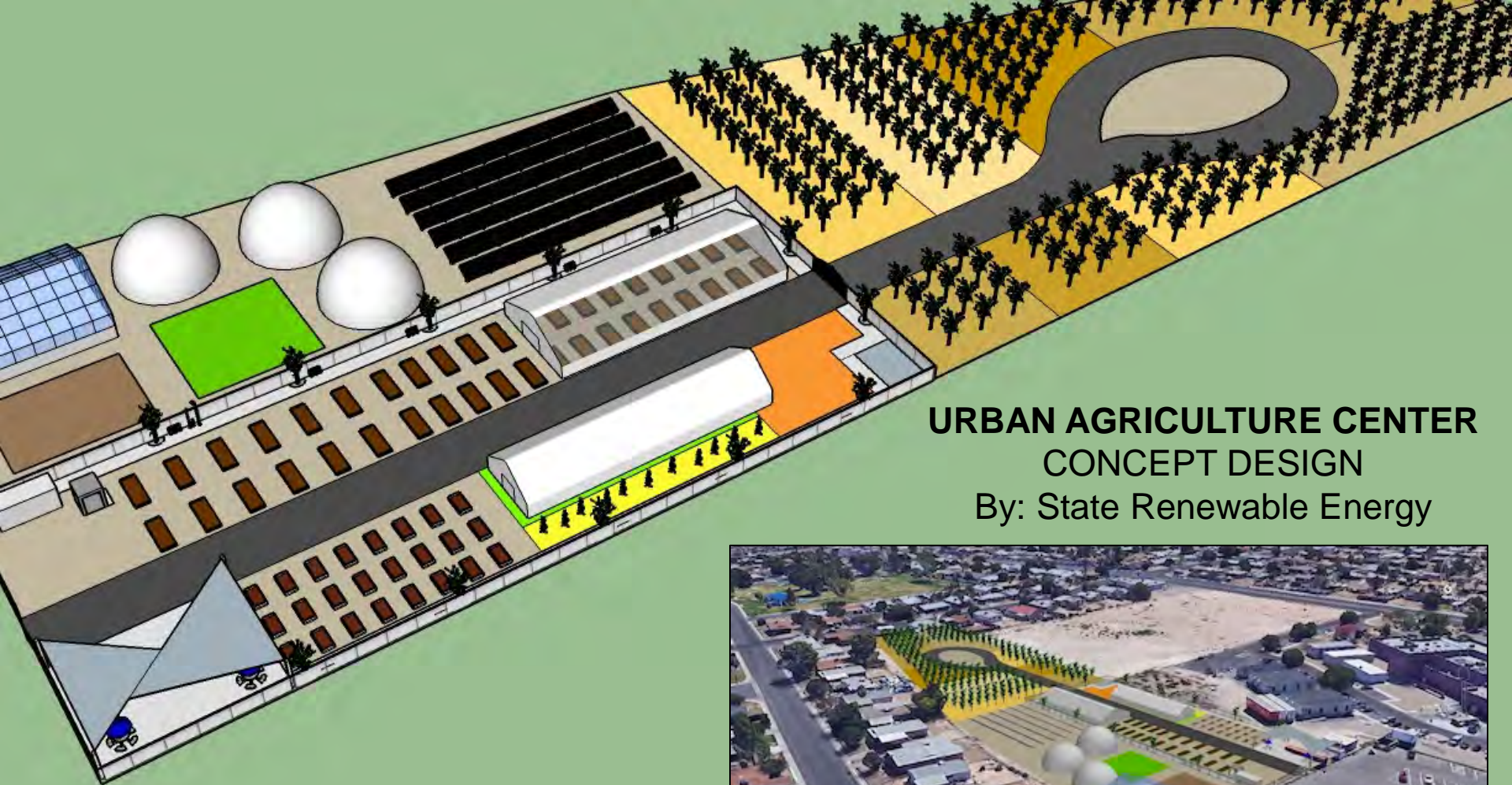




## PLANS IN PROGRESS

- Farmer's Market
- Hoop Houses
- Composting Area
- Redevelopment





## URBAN AGRICULTURE CENTER CONCEPT DESIGN

By: State Renewable Energy

### FEATURES:

- Community Orchard
- Hydroponics, Aquaponics
- Solar Power
- Robotics & Automation
- STEM Learning Lab

