

# Willamette Mainstem Cooperative

The Willamette Mainstem Cooperative is a group of landowners, organizations, and volunteers working together to improve stewardship of Willamette River resources with a focus on the Corvallis to Albany river reach.

## Foster Partnerships

- Collaborative projects
- Community events
- Outreach materials

## Invasive Plant Management

- Survey and assessment
- Manage priority invasives
- Monitoring

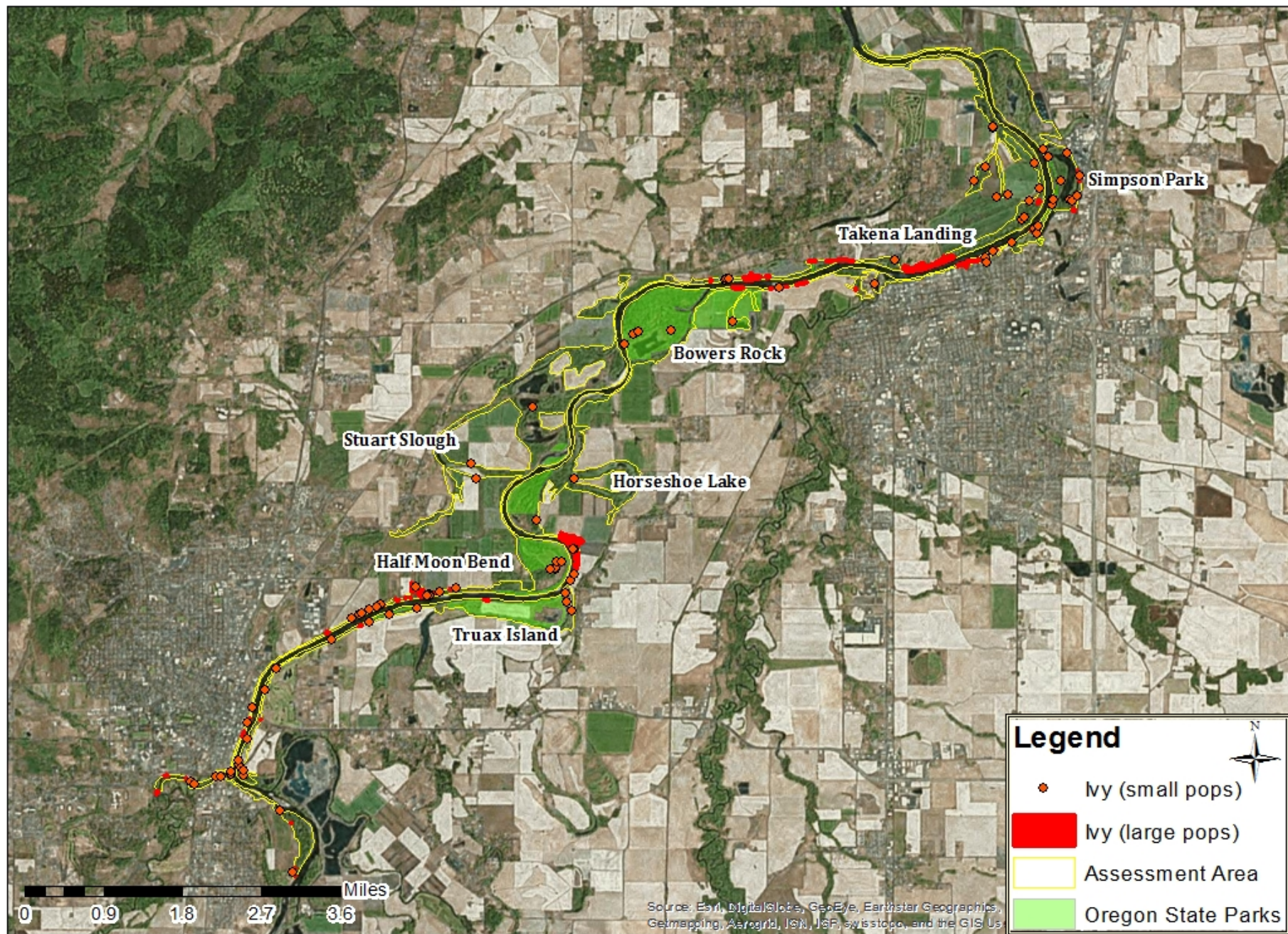
# Willamette River Survey Results

Species Found in Small Patches	Species Abundant, Yet Controllable	High Quality Habitat
Japanese knotweed	Ivy species	•15% or 385 acres of area surveyed
Purple loosestrife	False brome	•Mostly on public land
Scotch broom	Water primrose species	•Mostly in relatively undisturbed sites
Spotted knapweed	Old man's beard (Clematis)	•Patches average 6 acres

- 2,550 acres surveyed in 2012-2013
- 50 landownerships
- 15% or 385 acres of high quality habitat
- 72 invasive species mapped



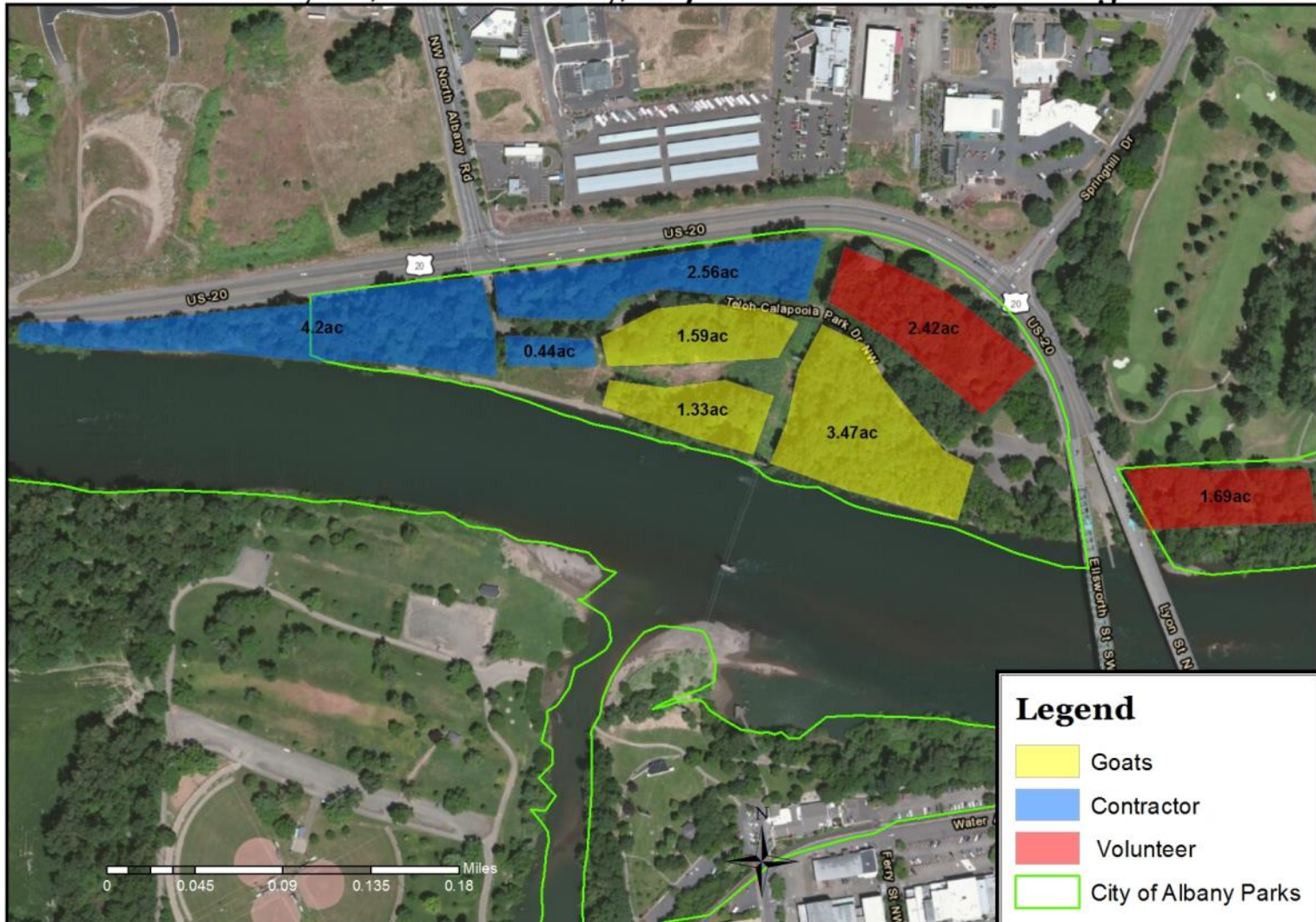
# Ivy Populations in Assessment Area





# Ivy Management at Takena Landing

## Proposed Areas for Ivy Removal 2015: Hwy 20, North Albany, Adjacent to Takena Landing



# Partner Events



Benton Soil and Water  
CONSERVATION DISTRICT



## Let's Pull Together on September 12!

Bring your friends, your family, or your group, and join in to reduce the impacts of invasive plants! [Sign up](#) to remove weeds from one of seven Let's Pull Together locations from 9 am

See You at Our  
Upcoming Events!

9/12 [Let's Pull  
Together](#)

9/16 [Upriver Movie  
Premiere](#)

9/29 [Oregon State  
Wood Board Meeting](#)



# Goat Power at OSU



Goats eat ivy on campus



Site tour with Briana at Takena Landing



# Ivy Management at Takena Landing



## Benefits of using goats:

- Less herbicide/ IPM
- Good for PR
- Clears brush completely
- Mult. weeds targeted



# Ivy Management at Takena Landing





# Goats Eat Weeds!

<https://youtu.be/QVqxKNmoDgI>



# Ivy Management at Takena Landing





# Ivy Management at Takena Landing



# Ivy Management at Takena Landing

**ALBANY**  
**Democrat-Herald**

54°  
Overcast  
Weekly Forecast

NewsObitsSportsOpinionThe ESpecial SectionsPhoto/VideoBlogsClass

Hot TopicsIntruder found in Linn County judge's garage • Cyclist strikes vehicle on Pacific Boulevard • Four fac

Home / News / Local / Government and Politics

Four-legged mowers clean Takena Landing

See it in Print

Recommend 95TweetG+ 0Share 5PrintEmail





Photos by David Patton, Democrat-Herald

Shepherdess Briana Murphy of Mowing With Goats pets one of her 60 goats Tuesday while on the job site at Takena Landing Park in Albany.

Buy Now



# Ivy Management at Takena Landing





# Goat Power



- 3 weeks of grazing
- Pulling Together Event w/ 30 volunteers
- Press Release
- Community Outreach





A green tree frog is perched on a large, vibrant green lily pad. The frog's body is a bright green, with lighter green on its face and chest. It has large, prominent eyes and a slightly open mouth. The lily pad it sits on is large and has a prominent central vein. In the background, other lily pads and the dark surface of a pond are visible, creating a natural, serene setting.

# Thank You!

Crystal Durbecq  
Benton Soil and Water Conservation District  
[cdurbecq@bentonswcd.org](mailto:cdurbecq@bentonswcd.org)  
(541) 753-7208