



Public Outreach in Urban Areas

Janine Rybka, District Administrator



The mission of the Cuyahoga SWCD is to advocate and implement best management practices for conservation of land and aquatic resources in a developed environment through education, stewardship and technical assistance.



- **Conservation Education**
- **Stormwater Pollution Prevention**
- **Urban Agriculture**
- **Watershed Programs**

Strategic Priorities

Advocate for and Provide Urban Soil and Water Conservation Services and Programs

Establish and Maintain Strategic Alliances to Advance Soil and Water Conservation

Increase Community and Stakeholder Awareness of Cuyahoga SWCD

Cuyahoga County Demographics

1.2 million people

59 independent communities

< 30% of the county is undeveloped

1% of land in agriculture

Since 2003 nearly all Cuyahoga County communities must comply with the EPA's NPDES Phase II storm water permit requirements.

Storm Water Program Requirements

Minimum Control Measures

- **Public Involvement**
- **Public Education**
- **Illicit Discharge Detection and Elimination**
- **Erosion and Sediment Control**
- **Post Construction Runoff Control**
- **Pollution Prevention/Good Housekeeping**

Do what you know (and love) and the money will follow!

- Prior to 2003, funding was limited
- Communities needed help -- a unique opportunity to establish a standardized program
- Cuyahoga SWCD began to provide assistance to communities. MOUs were established to address permit requirements, implement program, provide natural resource technical assistance



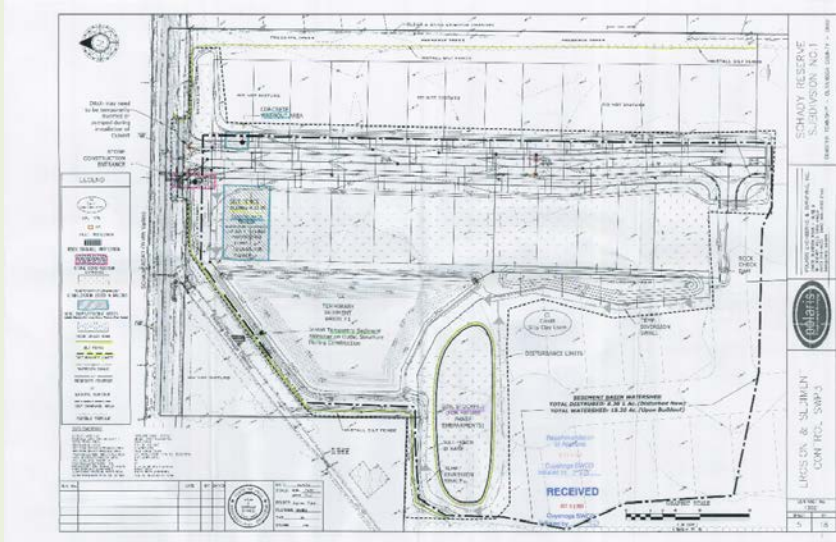
Conservation Education Program



County-Wide
and
Individual
Community-
Based
Programs



Storm Water Program

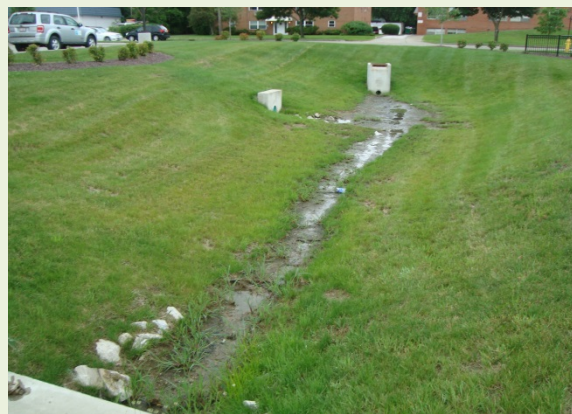


- Erosion and sediment control
- Water quality/quantity



Long-Term Operation & Maintenance

- Annual inspections of stormwater control measures; reports with fact sheets
- Education on long-term maintenance-municipal staff and homeowners associations



LOCAL GOVERNMENT
ASSISTANCE:
PROGRAMS FOR MS4
COMPLIANCE

CLEAN WATER IS IMPORTANT
TO US ALL

LAKE ERIE STARTS HERE



STORMWATER CONTROL
MEASURES:
LONG-TERM INSPECTION &
MAINTENANCE INSPECTION
PROGRAM

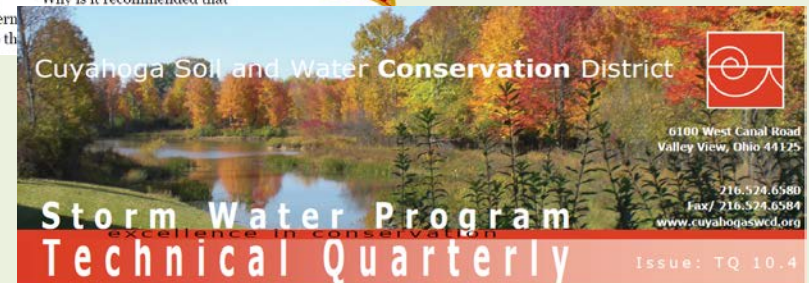
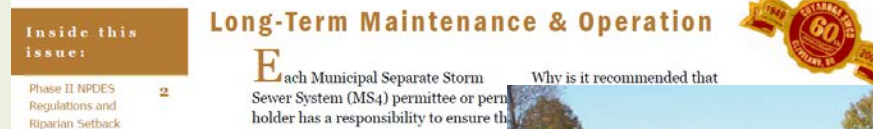


Tool Box Talks: A Public-Private Partnership



Technical Quarterly

- Web Based
- Printed





come!

Storm Water Technical Tips is our way to deliver technical information about relevant storm water management topics.

Technical Tips will have a quarterly focus with short emails delivered to you every other week.

Quarter - 2016: "Construction Process"

The focus of *Storm Water Technical Tips* for the first quarter will be on construction

Q1 2016 Construction Preparation

- Common Sense Site Layout
 - Implementation Schedule
 - Amendment/Modification Log
- THIS BECAME A BLOG POST
(3/15)
- Being A Good Neighbor
 - Wrapping Things Up
 - Project Transition

Q2 2016 Working in and around Streams or Wetlands

- What are jurisdictional waters?
- 404 permit
- 401 permit
- Stream/Wetland specific BMPs
- BMP removal, turbidity curtain removal
- Stream Stabilization /
Restoration – after work is complete

Q3 2016 What should you know about concrete

- Concrete washout pits – pumping out waste water, testing
- Saw-cut Dust/Slurry
- Mobile Batching Plants
- Low Strength Material (LSM)
- Admixtures
- Mortar & Grout & Paint

Q4 2016 SWP3 Implementation in Sub-divisions

- Individual Lot Controls
- Temporary Seeding vs Landscaping
- Individual Lot Transfer of Coverage
- Individual Lot NOT & Transfer to Owner
- Transfer of Sub-division to an HOA
- Long-term Operations & Maintenance
- 2016 E-Blast Year in Review/
Conclusions

Watershed Outreach



ROCKY RIVER WATERSHED

The Rocky River Watershed is under continuous development pressure, causing increased flooding, erosion and nutrient inputs. All of these factors effect our water quality and our way of life. Your property has been specifically selected because of the importance to the health of the stream. The stream in your backyard flows into the Rocky River and eventually into Lake Erie. Besides clean water, Lake Erie provides over \$ 3 billion dollars of revenue to Cleveland annually.



GOALS OF THE PROJECT

Our goal is to install native vegetation of your choice (trees, shrubs, flowers, grass) along your property to improve and maintain the quality of the Rocky River. Planting will take place along the length of the stream on your property, ideally 15-20 feet from the streambank for the maximum benefits for the stream and your home.

HOW IT WORKS

The process is run as a reverse auction. Targeted homeowners will place their lowest bid on allowing us to install vegetation along your stream bank. Properties will be selected from lowest to highest bid until the budget is exhausted.



Euclid Creek
Watershed



cuyahoga

SOIL & WATER

conservation district

www.cuyahogaswcd.org

jrybka@cuyahogaswcd.org