



Natural Landscapes for Homes with Jersey-Friendly Yards

Becky Laboy, Education Outreach Specialist
Ocean County Soil Conservation District

education@soildistrict.org

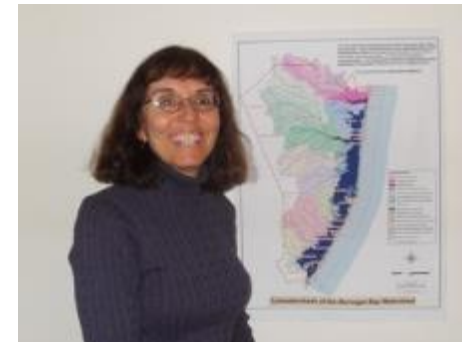
609-971-7002 ext. 114



Karen Walzer, Public Outreach Coordinator
Barnegat Bay Partnership

kwalzer@ocean.edu

732-255-0472 ext. 2

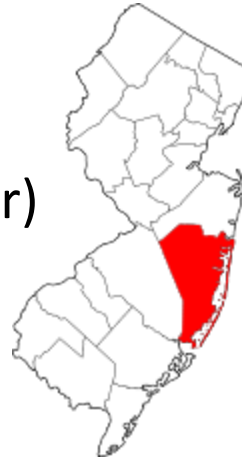


Ocean County Soil Conservation District



- Serves Ocean County, New Jersey

- 629 sq miles of land
- 287 sq miles of water
- Population: 592,497 (doubles in summer)
- 50 miles east of Philadelphia
- 70 miles south of New York City
- 25 miles north of Atlantic City
- Jersey Shore
- Pine Barrens
- Kirkwood-Kohansey Aquifer

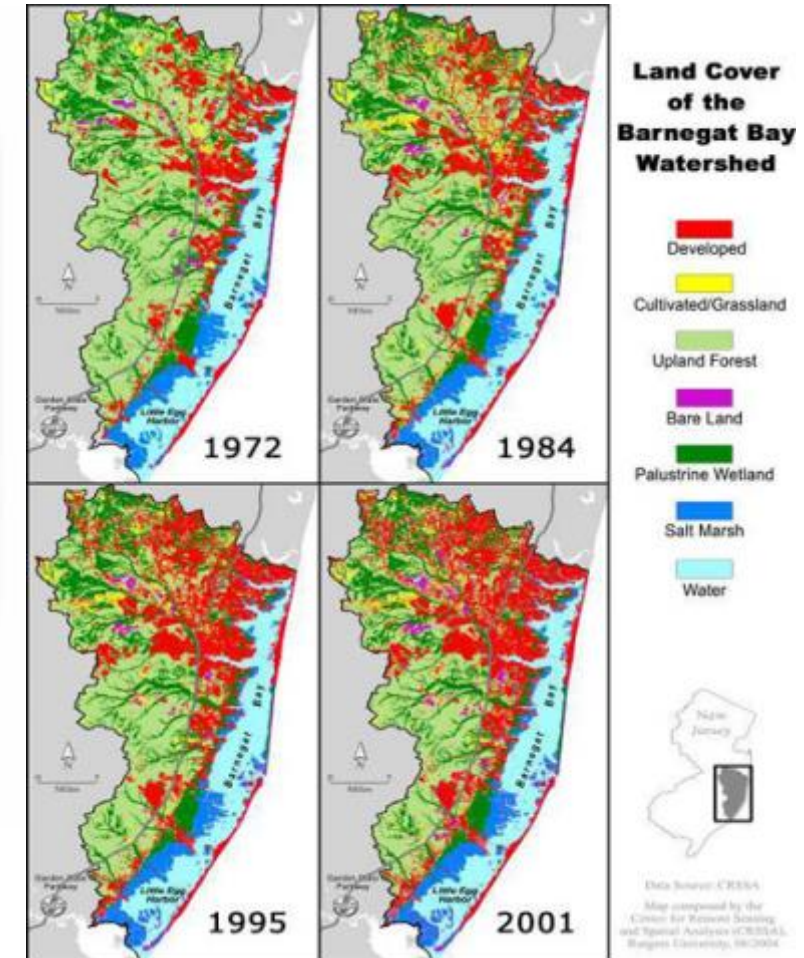


"To be recognized as a conservation leader with the ability to partner effectively, and use every opportunity to further sustainable resource management for current and future citizens of Ocean County and beyond."



Barnegat Bay Partnership

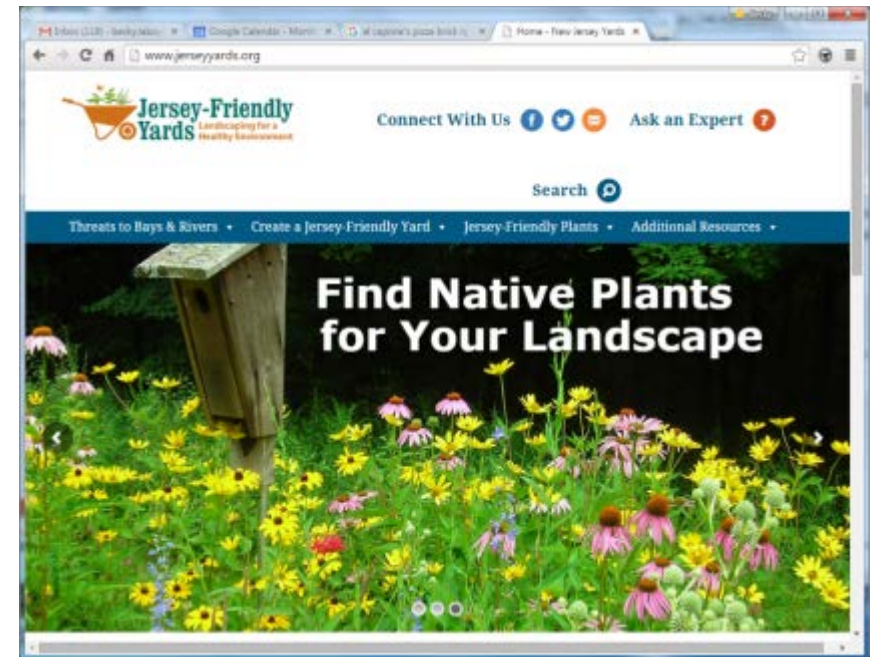
- National Estuary Program
 - Working to improve the health of the Barnegat Bay Watershed
- Barnegat Bay Watershed
 - Overlays Ocean County
 - Water bodies drain over the land following a gentle slope towards to the Barnegat Bay
 - 30% impervious surfaces
 - Stormwater runoff
 - Non-point source pollution
 - Fertilizers
 - Eutrophication



Jersey-Friendly Yards Website

“Clean water in our state for drinking, swimming, fishing, and wildlife, and a healthier environment for everyone.”

- Developed by BBP with funding from NJDEP
 - To address eutrophication at the source
 - Build healthy soil
 - Conserve water
 - Re-establish habitat for pollinators



Orientation to the Jersey-Friendly Yard Website

www.jerseyyards.org





Piloting the Jersey-Friendly Yards Website

- 2015: “NJ Yards” - 6 Home Owners Associations along the Metedeconk River

- Bay Head Shores
- Cedarcroft Club
- Metedeconk River Yacht Club
- Nejecho Beach
- Seawood Harbor
- Visitation Relief Center



- 2016: “From Lawn to Garden – Going Green, Saving Green” - 3 OceanFirst Bank Branches

- Hooper Ave
- Adamston Rd
- Leesville Rd



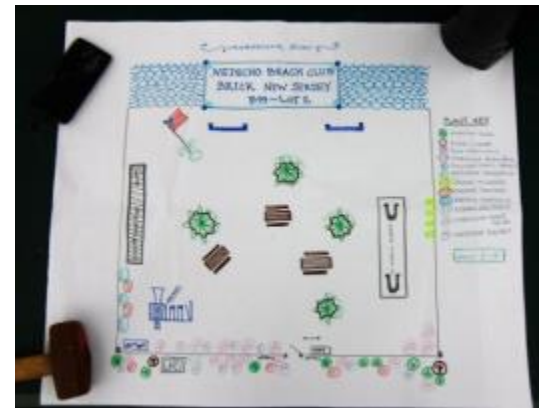
- 2017: “Experience Jersey-Friendly Yards” - 3 Barnegat Bay Watershed Community Properties

- Cattus Island County Park
- Island Heights Library
- Pine Beach Municipal Park

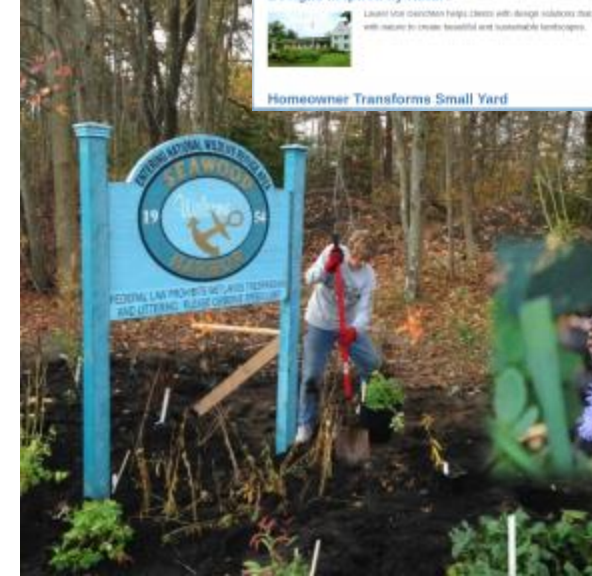


2015: “NJ Yards” - 6 Home Owners Associations along the Metedeconk River

- Application Process
- Orientation Mtg
 - Introduced JFY website
- OCSCD Site and Soil Assessments
- Review Mtg
- Garden Installation
- Celebration



“NJ Yards” Projects – Success Stories



2016: “From Lawn to Garden – Going Green, Saving Green!”



- 3 OceanFirst Bank Branches: Leesville, Adamston and Hooper
 - Plan the Jersey-Friendly Gardens
 - 8 Steps to a JFY
 - Site Assessments
 - Soil Tests



Design the Jersey-Friendly Yard Projects

Purple Coneflower



False Sunflower



Eastern Columbine

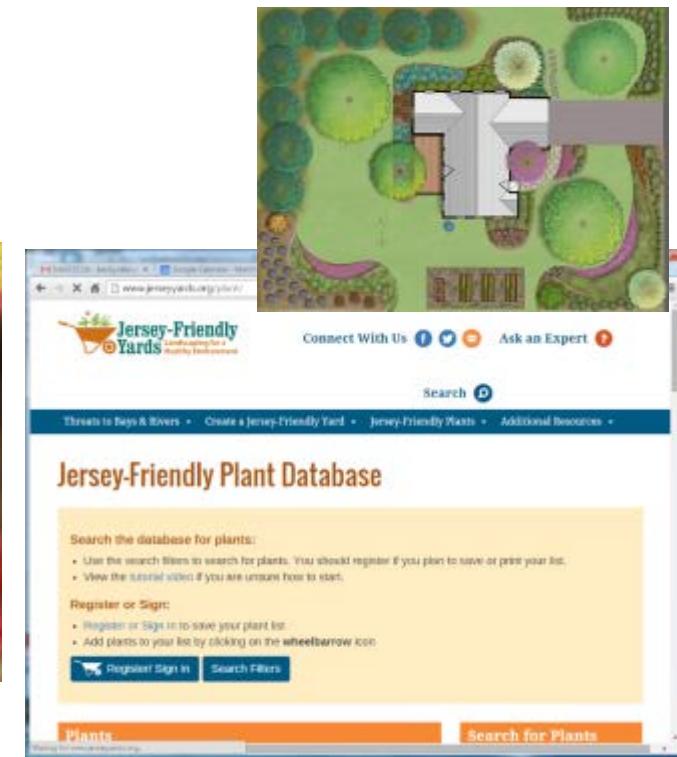


Blue Wild Indigo



Adamston Branch Garden Map

200 sq ft



Install the Jersey-Friendly Yard Projects



Showcase the Jersey-Friendly Yards Projects



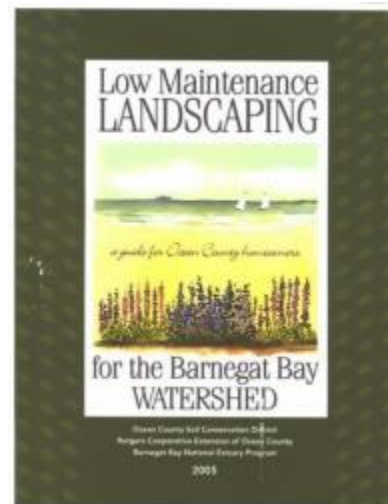
2017: “Experience Jersey-Friendly Yards!” Project

- 3 Community-based Locations:
 - Cattus Island County Park
 - Island Heights Library
 - Pine Beach Municipal Park



Education Component

- Introduce the Jersey-Friendly Yards website
- Showcase Jersey-Friendly native plant gardens
- Share supplemental literature
 - Going Native!
 - Low Maintenance Landscaping



Success, Challenges, Opportunities



- Successes:

- Jersey-Friendly Demonstration Gardens throughout the Watershed
- Lawn replaced with native plants
- Reduction in fertilizers and non-point source pollution



- Challenges:

- Garden maintenance
 - weeding,
 - mulching,
 - watering



- Opportunities:

- Continue to plant Jersey-Friendly Gardens
- Continue to educate homeowners and residents about importance of planting native, Jersey-Friendly yards and gardens





Thank you!

Becky Laboy, Education Outreach Specialist
Ocean County Soil Conservation District

education@soildistrict.org

609-971-7002 ext. 114



Karen Walzer, Public Outreach Coordinator
Barnegat Bay Partnership

kwalzer@ocean.edu

732-255-0472 ext. 2

