

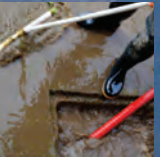
All water and contaminants that enter storm drains go directly into our environment.

Storm drain contamination is one of the major causes of pollution in our rivers, lakes, and streams. Pollution of stormwater runoff can negatively impact our environment and introduce unnecessary risk to public health and safety ultimately affecting the livability of Clark County and surrounding communities. To control stormwater, the local cities and counties operate and maintain a system of underground pipes and catch basins to transport rain and snow melt into the ground, rivers and streams. This water does not get treated so we need to keep contaminants out of our storm drains.

Little Known Facts about our Stormwater System:



Storm drains do NOT treat the water that flows into the drains.
RV and pet waste flow directly into our beautiful environment causing foul odors and pollution. No one, including fish want to swim and recreate in your waste.



Storm drains do NOT prevent flooding when clogged.
Storm drains are designed to prevent flooding. When weeds, dirt, grass clippings and leaves are left on the road, they eventually find their way to the drain and can cause your personal property and your neighbor's property to flood.



Storm drains do NOT protect the fish, rivers and streams.
Motor oil, paints and other pollutants flow directly to our waterways. There is no difference between pouring pollutants down a storm drain and dumping them directly into the river.



Public storm drains are NOT designed to treat wastewater runoff from private property.
When you hose off sidewalks, over-water your yard and wash your vehicle in your driveway, all the water, soap and debris end up in the storm drains. Not only are you wasting precious water resources, all contaminants will affect the quality of our water in and around Clark County.



ONLY RAIN DOWN THE DRAIN...

Keep Clark County Clean, Please Keep Contaminates Away From ALL Storm Drains.

Stormwater systems can be found throughout the Clark County and include ditches, catch basins, curbs, underground pipes, ponds, swales and dry wells. These structures carry stormwater to outfalls on local rivers or allow the stormwater to drain into the ground. Contaminants discharged into stormwater systems can pollute surface waters as well as ground water.

Keeping a clean stormwater system helps our community by:

- Preventing flooding of personal property and/or damage to public infrastructure, including roads.
- Minimizing foul odors and maintaining aesthetically pleasing neighborhoods.
- Keeping our rivers, lakes & streams clean.
- Strengthening our economy by offering healthy recreational opportunities.

For more information visit www.ecy.wa.gov



STORM DRAINS:

Do you know where the water (and any debris) goes?

(We bet you'll be surprised...)



When it rains or snows, the water must go somewhere. Without controlling the flow of rain and snow melt, our community would be damaged. Uncontrolled water causes flooding, unclean waterways, contaminated fish and unhealthy communities.

Minimize pesticide and herbicide use



Wash your car at a commercial car wash or on the grass.

A circular icon with a red border and a diagonal red line through it, indicating prohibition. Inside the circle, a paint can labeled 'PAINT' is shown pouring yellow paint into a black trash bin.

Remember, only rain down the storm drain!

Follow all directions on fertilizer labels carefully.

Direct downspouts onto lawns, landscaped areas, or raingardens and away from paved surfaces.

