



Washington State
Conservation Commission

Disaster Planning for Conservation Districts

Bill Eller
Washington State Conservation Commission

Agenda

- What is a disaster?
- Why is preparing for them important?
- What role can a conservation district play in disaster preparation, response and recovery efforts?
- Why are Districts special?

What is a Disaster?

Definition of a Disaster (FEMA)

- What is a disaster?
 - FEMA's *Emergency Management Institute* has a whole course just on defining disasters.
 - FEMA's "Ready.Gov" website examples of disasters:
 - Natural disasters.
 - Pandemic.
 - Home fires.
 - Technological & accidental hazards.
 - Terrorist hazards.

Gov't Shutdown?

Federal Government Shutdown

October 2013

- 23 of 45 conservation districts in Washington State affected.
 - 51%.
 - All 23 CD offices were completely closed.

Federal Gov't Shutdown Continued

- Of the 23 CD's affected:
 - 3 were able to resume operations immediately.
 - 5 were able to resume operations after a few days.
 - 15 did not re-open their office for the duration of the Shutdown – 65% of those CD's affected.
 - No cooperator service.
 - No web-site operation.
 - No email or phone.

Federal Gov't Shutdown Continued

- Why were 15 CD's unable to re-open their offices during the Shutdown?
 - No alternate office location identified.
 - Inability to function away from currently shut-down office.
 - Communication issues.
 - Office management issues (chain of command).

Lack of Planning



Why is Disaster Preparation Important?

Local Governments (i.e. Districts)

- Need to comply with -
 - Federal directives / laws
 - National Response Framework (NRF)
 - Presidential Directives
 - State planning efforts (CEMP & COOPs)
 - State laws related to disaster planning, response and recovery.

Washington State

Comprehensive Emergency Management Plan

- Basic Plan -



June 2011

**Washington State Military Department
Emergency Management Division**



Washington State (CEMP) Says . . .

Planning Assumptions

- Some emergencies, disasters or incidents will occur with enough warning that appropriate notification will be issued to ensure some level of preparation. Other situations will occur with no advanced warning....
- The state may be unable to satisfy all emergency resource requests during a major emergency or disaster.
- Members of the public, business, state and local agencies and industries are expected to provide their own resources for the first three days of an emergency or disaster.

Washington State CEMP Continued

- Local jurisdictions will comply with RCW Chapter 38.52 WAC Title, and will:
 - Establish procedures for continuity of government;
 - Establish an emergency management organization and facility;
 - Prepare plans and procedures, including an all-hazard CEMP;
 - Communicate with the State Emergency Operations Center;
 - Issue local emergency proclamations and request state assistance when appropriate; and
 - Preserve essential records.

2011 Washington State CEMP

- **Conservation Commission duties:**
 - Provides outreach to the agricultural community **through local conservation districts.**
 - Coordinates with all levels of government and the private sector to reduce or alleviate the affects of emergencies or disasters on renewable natural resources.
 - Provides personnel resources to support emergency activities and disaster work.

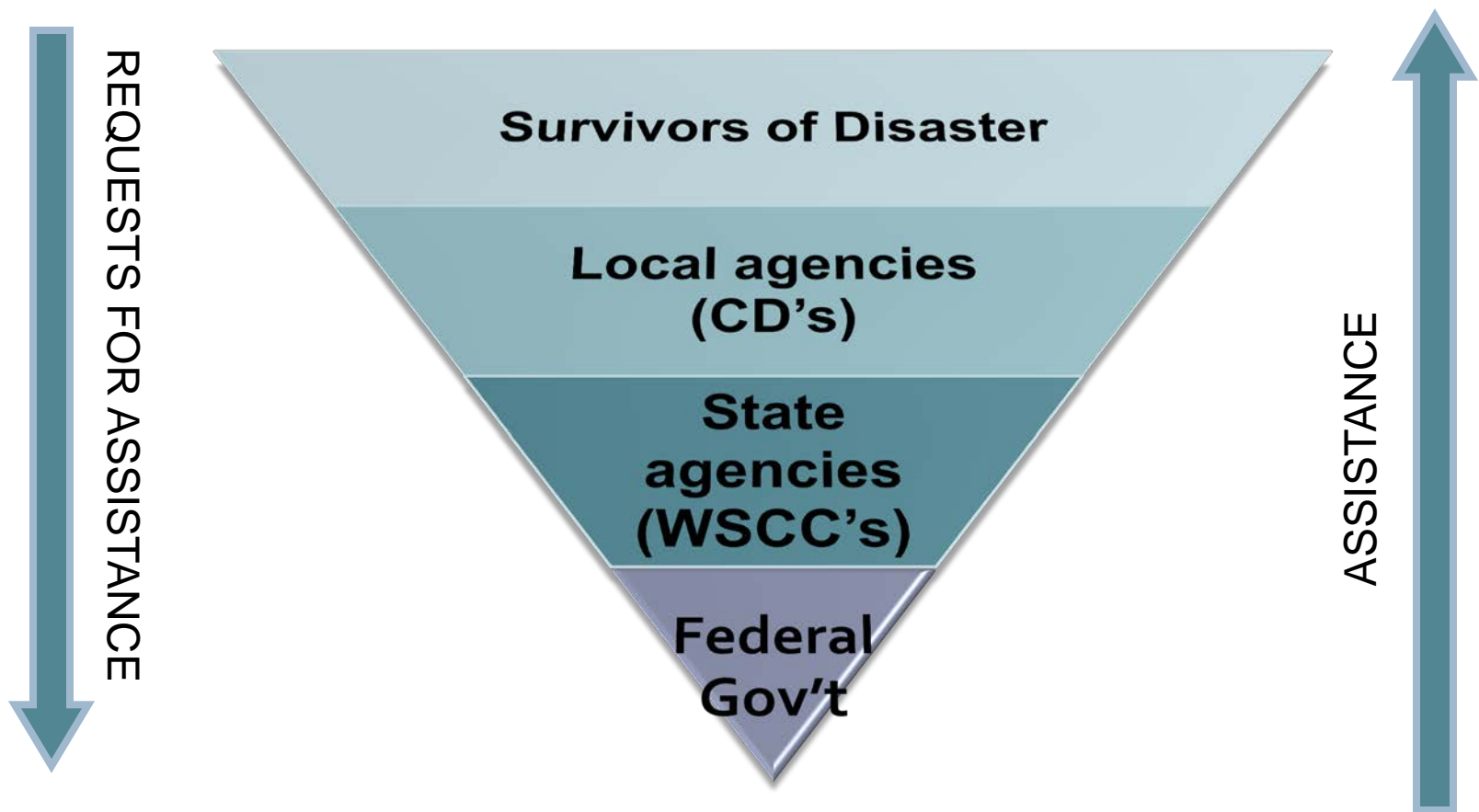
Emergency Support Functions

- Emergency Support Functions (ESF's) – planning term for those duties and obligations of state agencies to assist other state agencies and the public in times of disasters.
 - Primary
 - Support

WSCC Obligations in State CEMP

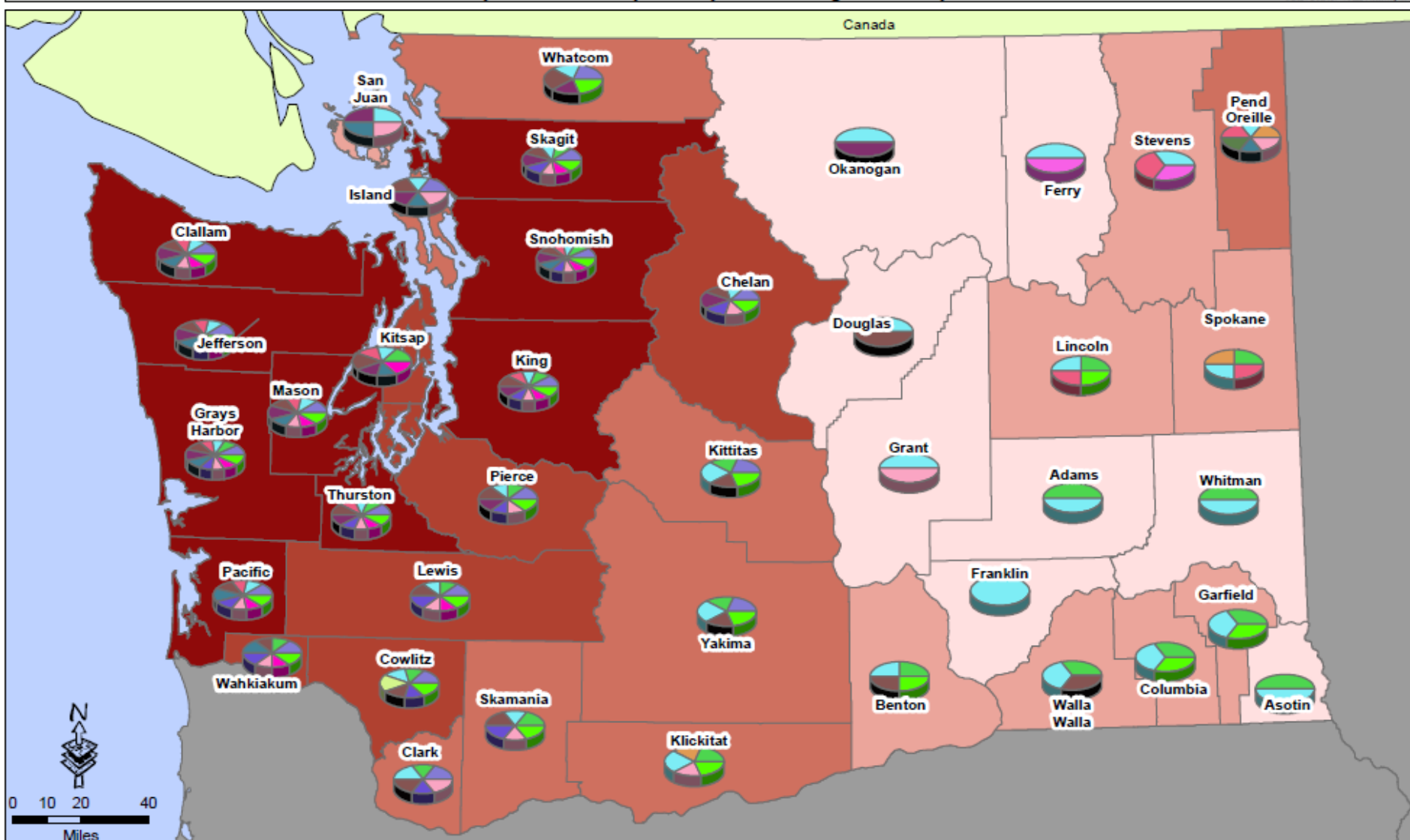
ESF																
	Responsibilities: C = Coordinating Agency JP = Joint Primary Agency P = Primary Agency S = Support Agency															
AGENCY	1 – Transportation	2 – Communication, Information & Warning	3 – Public Works & Engineering	4 – Firefighting	5 – Emergency Management	6 – Mass Care, Emergency Assistance, Housing & Human Services	7 – Logistics Management & Resource Support	8 – Public Health & Medical Services	9 – Search & Rescue	10 – Oil & Hazardous Material Response	11 – Agriculture & Natural Resources	12 – Energy	13 – Public Safety & Security	14 –Long-Term Community Recovery	15 – External Affairs	20 – Defense Support to Civil Authorities
Conservation Commission		S	S	S	S		S				S			S		

Why are ESF's Important?



Washington State Disaster Density/Declaration By County 1996 through February 2009

MCD: D81817-WA_DisasterHistory.mxd

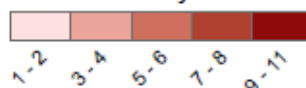


LOCATION MAP



LEGEND

Disaster Density



DR-1079	DR-1100	DR-1152	DR-1159	DR-1172	DR-1182	DR-1252	DR-1255	DR-1361	DR-1499	DR-1641	DR-1671	DR-1682	DR-1734	DR-1817
---------	---------	---------	---------	---------	---------	---------	---------	---------	---------	---------	---------	---------	---------	---------



FEMA

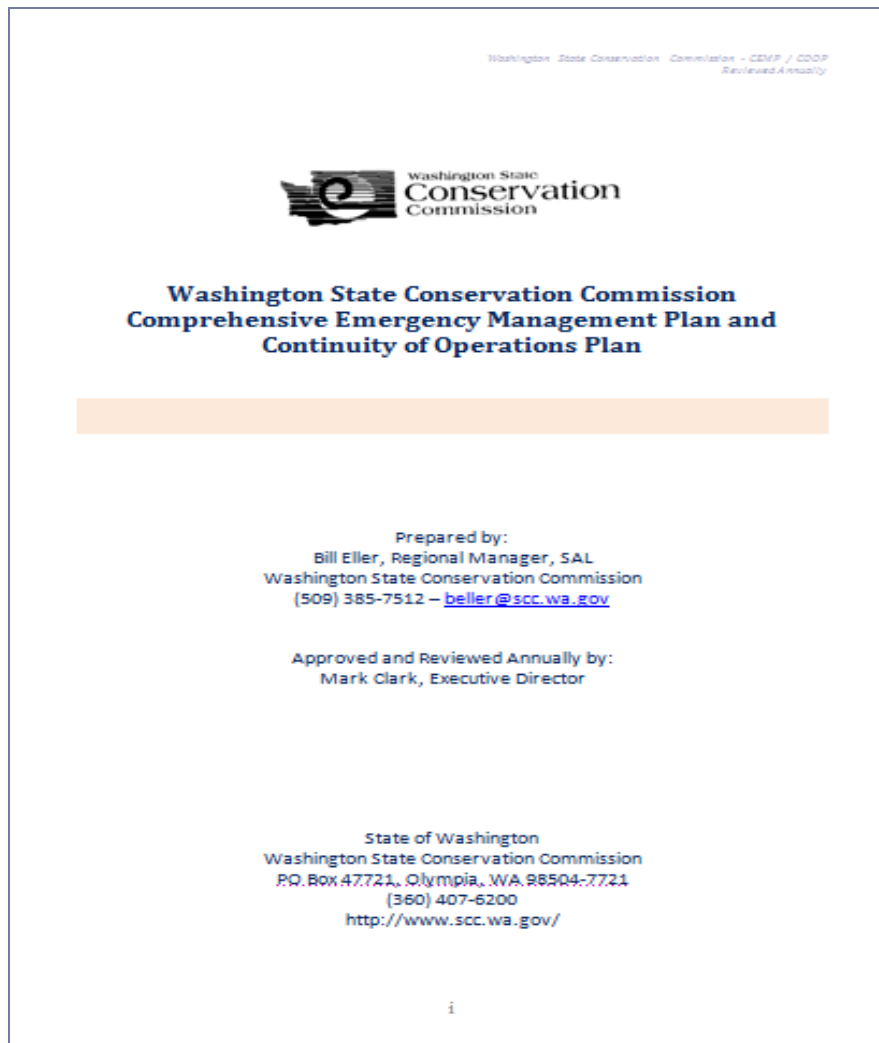
FEMA Region X GIS
Created By: JKELLER
Created On: 02/24/2009

What Can Districts Do?

Planning Efforts

- Comprehensive Emergency Management Plan (CEMP)
- Continuity of Operations Plan (COOP)
- Other planning efforts:
 - Hazard Mitigation Program.

WSCC's CEMP and COOP



1. CEMP & COOP combined.
2. 37 pages (relatively short).
3. Available on secure web site and published to staff.

WSCC CEMP Sections

- Section 1: Overview of Impacts, Risks, Recovery and Response
- **Section 2: Business Impact Analysis**
- **Section 3: Risk, Threat, and Vulnerability Analysis**
- **Section 4: Recovery Strategy**
- Section 5: Emergency Response and Problem Escalation
- Section 6: Plan Activation
- Section 7: Recovery Operations
- Section 8: Plan Validation/Testing
- Section 9: Training
- Section 10: Plan Maintenance
- Section 11: Supporting Documentation
- Appendix A: Contact Information

WSCC CEMP Section 2 - Detail

- Section 2: Business Impact Analysis
 - A – Organization and law
 - B – Service areas
 - C – Operational and financial impacts of disaster or disruption
 - D – Criticality of business functions

Section 3: Risk, Threat, and Vulnerability Analysis

■ A – Natural hazards

- 1 – Earthquake
- 2 – Tsunami
- 3 – Tornado or windstorm
- 4 – Winter storm
- 5 – Flooding
- 6 – Landslide
- 7 – Volcanic eruption, glacial outbursts, and lahars
- 8 – Lightning
- 9 – Smoke, dirt, or dust

■ B – Accidents

- 1 – Disclosure of confidential information
- 2 – Electrical disturbance or interruption
- 3 – Spill of toxic chemical

■ C – Environmental failure

- 1 – Water damage
- 2 – Structural failure
- 3 – Fire
- 4 – Hardware failure
- 5 – Liquid leakage
- 6 – Operator or user error
- 7 – Software error
- 8 – Telecommunications interruption

■ D – Intentional acts

- 1 – Alteration of data
- 2 – Alteration of software
- 3 – Computer virus
- 4 – Bomb threat
- 5 – Disclosure of confidential information
- 6 – Sabotage or terrorism
- 7 – Internet attacks

Gov't Shutdown?

WSCC CEMP Section 4 - Detail

- Section 4: Recovery Strategy
 - A – Priorities during recovery
 - B – Recovery requirements for critical business operations
 - 1 – Certify elections and appoint supervisors
 - 2 – Recommend funding and administer funds
 - 3 – Review district operations and assist supervisors
 - C – Provisions for offsite storage of critical data
 - 1 – Provisions for headquarters operations
 - 2 – Provisions for satellite operations
 - D – Alternative processing strategies and facilities
 - 1 – Command centers
 - 2 – Alternate business operations
 - 3 – Alternate data processing
 - 4 – Alternate data communications

Planning Resources



Washington Military Department

Emergency Management Division

NORTHWEST WARNING, ALERT & RESPONSE NETWORK

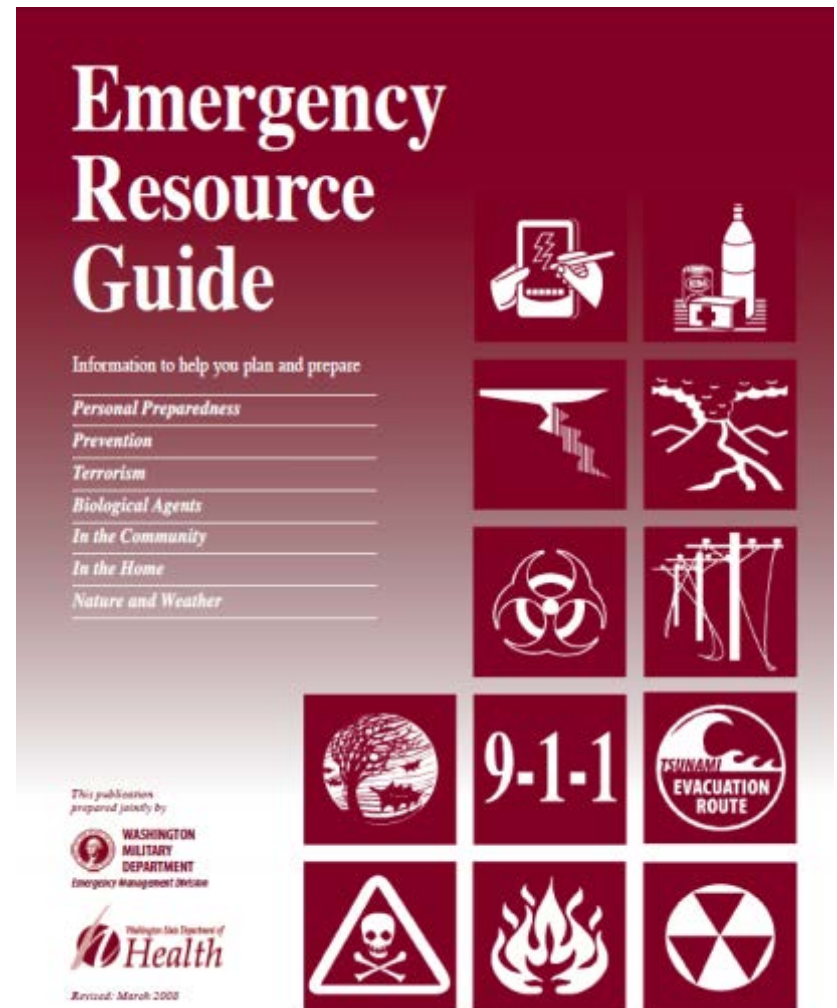


A Public, Private Partnership



Resources Available

- Emergency Resource Guide
 - <http://www.doh.wa.gov/phepr/handbook.htm>





Washington Military Department Emergency Management Division

Wednesday, June 10, 2009

Go!

[Home](#) [Hazards](#) [Preparedness](#) [Disaster Assistance](#) [E911](#) [Grants](#) [Training & Exercises](#)

[About Us](#) [News](#) [Job Opportunities](#) [Topics A-Z](#) [Contact Us](#)

Font Size [A](#) [+A](#)

[Personal Preparedness](#)
[Preparedness Videos](#)
[Neighborhoods](#)
[Schools](#)
[Businesses](#)
[In-Focus Campaign](#)

Preparedness

Thanks for visiting! The goal of the Preparedness section is to provide relevant, up-to-date information and resources to help you prepare for disasters. As you can see this is a work in progress and new materials are under development and will be posted soon.

Related Links

- [In-Focus Campaign](#)
- [Publications](#)

Learn how to...



Personal

Prepare your family and home.



Schools

Build a Basic Emergency School Plan and find related resources.



Neighborhood

Organize your neighborhood to effectively respond to disasters.



Business

Protect the future of your business by creating a disaster plan.

Here's what's coming next...

Washington State Web Sites

- Washington Disaster News - <http://www.wadisasternews.com/go/site/1105/>
- Washington State Emergency Management Division - <http://www.emd.wa.gov/>
- Center For Excellence in Homeland Security – Pierce College - <http://www.pierce.ctc.edu/HomelandSecurity/>
- Washington State Emergency Management Association - <http://www.wsema.com/>
- Washington State Department of Agriculture - <http://agr.wa.gov/Portals/HLS/>
- Northwest Warning, Alert and Response Network - <http://www.nwwarn.org/>

National And Other Web Sites

- Federal Emergency Management Agency, Region X - <http://www.fema.gov/region-x-ak-id-or-wa>
- Federal Department of Homeland Security - <http://www.dhs.gov/how-do-i/prepare-my-business-emergency>
- Extension Disaster Education Network (EDEN) - <http://eden.lsu.edu/Pages/default.aspx>
- American Red Cross - <http://www.redcross.org/>

Why Are Districts Special?

Relationships

- Landowners
- Farmers
- Ranchers
- Government agency staff
 - Local, State and Federal
- Elected government officials
 - Local, State and Federal



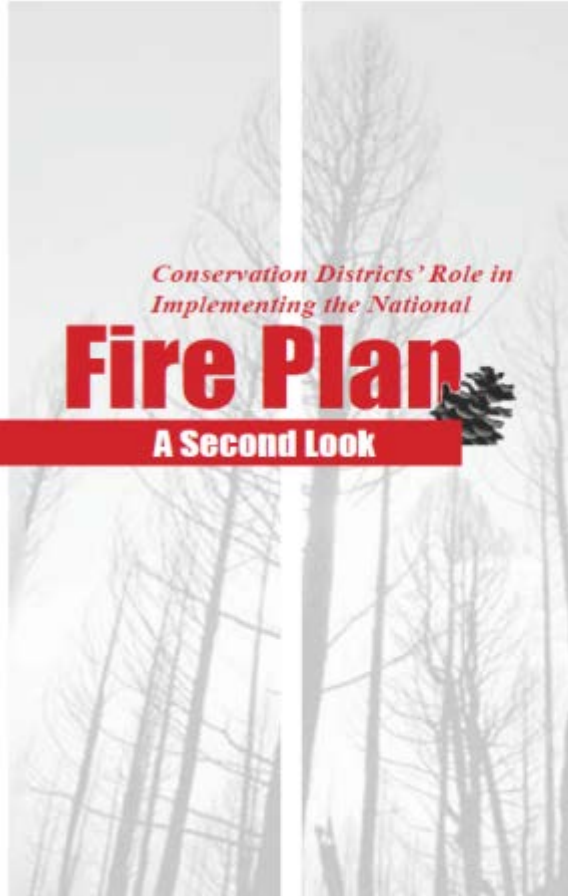
Conservation Districts have Unique Capabilities

- Familiar to and readily accessible by both urban and rural Americans.
- Nearly 3,000 conservation districts nation-wide.
 - ~15,000 men and women who serve on their governing boards.
 - ~1-10 staff members per Conservation District, if average around 5, then (15,000).
- Work with millions of cooperating landowners and operators.
- Division of local government (county, state).
- Technical expertise, planning expertise, and they are trusted.

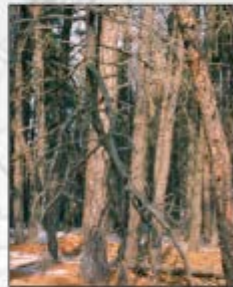
Why are Conservation Districts important?

- Knowledge
 - Local, State and Federal regulatory programs.
- Technical expertise
 - Natural resources: flooding, wildfire, landslide, etc.
 - Technology: resource use (GIS, measuring, monitoring).
 - Relationships: understanding the needs of those in their community (ranchers, operators, farmers).
 - Community: a working knowledge of the area they serve.
- Credibility
 - Non-regulatory relationships (trust).
 - Understanding of local customs, and political workings.
- Effective Collaboration
 - With diverse entities - governments, community groups, individuals.

What Can CD's Do?



This publication was produced by the National Association of Conservation Districts, in cooperation with the USDA – Forest Service and the US Department of Interior.



- Create own plans.
- Adapt plans already created:
 - NACD's *Conservation District's Role in Implementing the National Fire Plan: A Second Look*.
 - Fire focus, but can be adapted for other disasters.

What Can CD's Do?

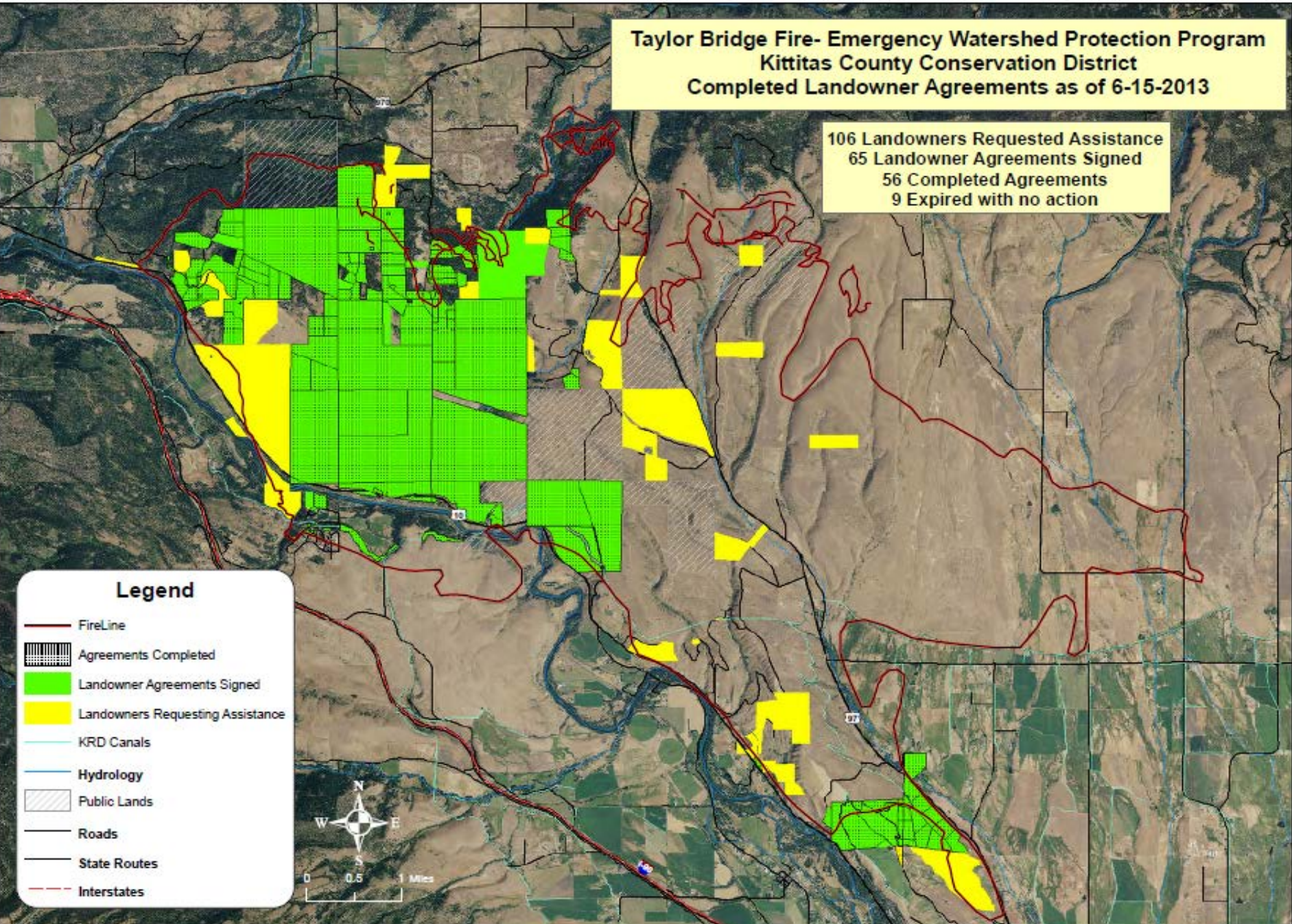
- Assemble stakeholders to solve problems at the community or watershed level.
- Provide education and information about critical local natural resources issues.
- Implement (or assist) disaster protection plans
 - Hazard fuel reduction (Firewise).
 - Critter pads during floods.
- Take a leadership role in coordination between federal and state partners, local communities and private landowners.
 - Washington State – Taylor Bridge Fire

Taylor Bridge Fire – Aug 2012

- Kittitas County Conservation District
 - Organized stakeholder response group.
 - Served as the point of contact for the public.
 - Implemented aerial seeding, hazard tree removal, erosion control barriers.
 - Provided \$568,164 in cost share to 56 landowners (\$426,123 in EWP funds and \$142,041 in WSCC funds) between Sept 2012-June 2013.

Taylor Bridge Fire- Emergency Watershed Protection Program
Kittitas County Conservation District
Completed Landowner Agreements as of 6-15-2013

106 Landowners Requested Assistance
65 Landowner Agreements Signed
56 Completed Agreements
9 Expired with no action




Legend

- FireLine
- Agreements Completed
- Landowner Agreements Signed
- Landowners Requesting Assistance
- KRD Canals
- Hydrology
- Public Lands
- Roads
- State Routes
- Interstates

What Can CD's Do?

- Memoranda of Understanding (MOU)
 - CD's can enter into MOU's with local government, county, state or private entities for mutual aid and cooperation before, during and after disasters.
 - Personnel
 - Equipment
 - Services

Damage to CD Facilities

- 
- After an emergency or disaster.
 - Before any federal funding can be provided.
 - Assist your State Emergency Management Division in determining damages sustained by state and local public facilities in order to apply through FEMA for assistance.
 - CD's are special purpose districts, so they would qualify to receive funds.

Local Involvement

- Contact your local EMD and make sure you are in their CEMP - http://www.emd.wa.gov/myn/myn_contact_info.shtm



Take-Away Message

- Don't think it can't happen to your District.
- Do start now –
 - Planning - CEMP / COOP.
 - Preparing –
 - Analyzing your operations.
 - Analyzing your hazards.
 - Preparing alternatives.
 - Building relationships with the local emergency management agencies.

Questions?



Bill Eller
Regional Manager
State Agency Liaison
Washington State Conservation Commission
beller@scc.wa.gov
509-385-7512
POB 47721
Olympia, WA 98504-7721