

National Association of Conservation Districts

Kris Hoellen
Vice President, Sustainable Programs
The Conservation Fund
September 19, 2013

The Conservation Fund forges partnerships to conserve America's legacy of land and water resources. Through land acquisition, community and economic development, and training and education, the Fund and its partners demonstrate balanced conservation solutions that emphasize the integration of economic and environmental goals.



**Wildlife
Habitat**



**Rivers &
Watersheds**



**Working
Landscapes**



**Historic
Places**



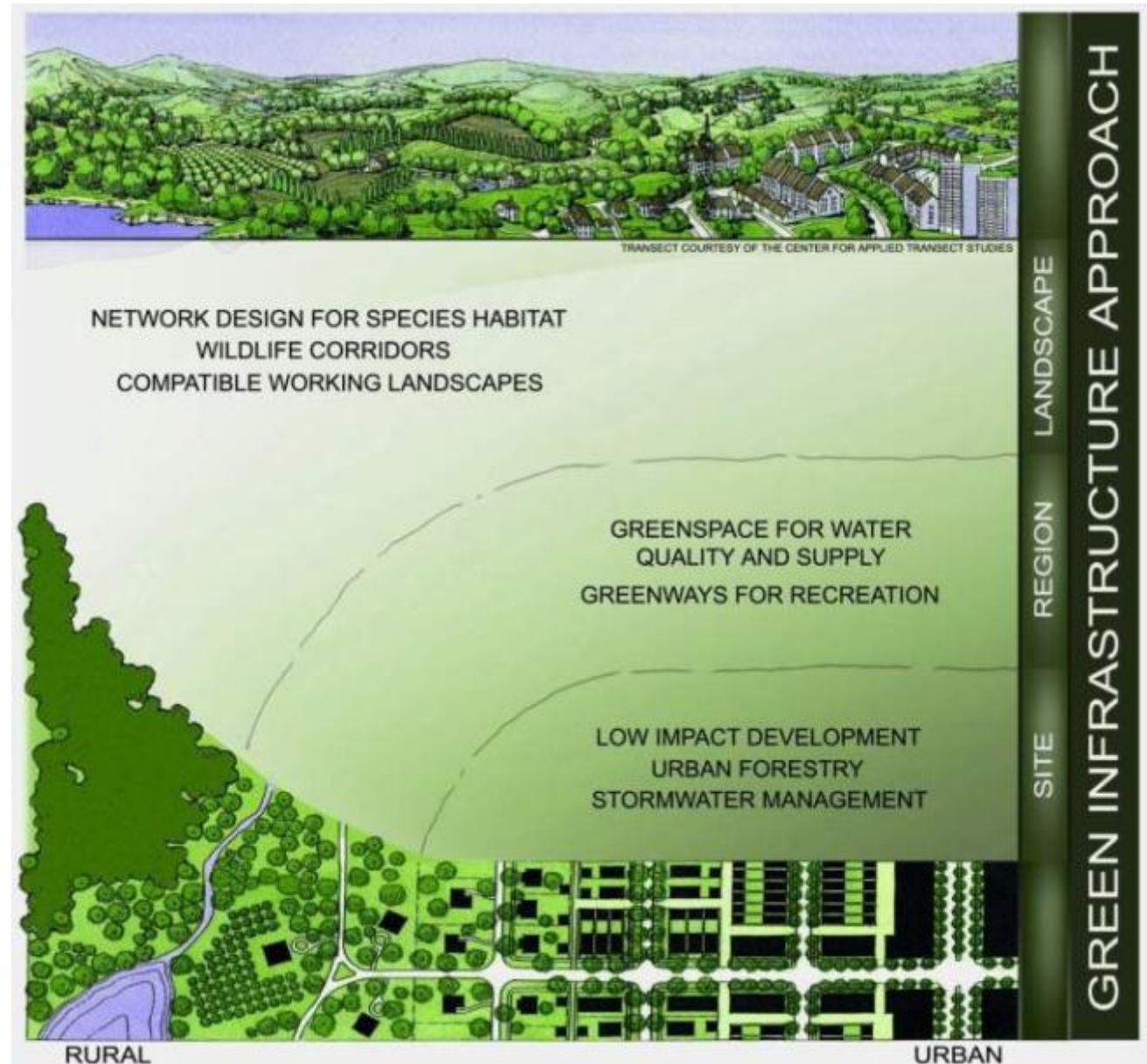
**Parks &
Green
Space**

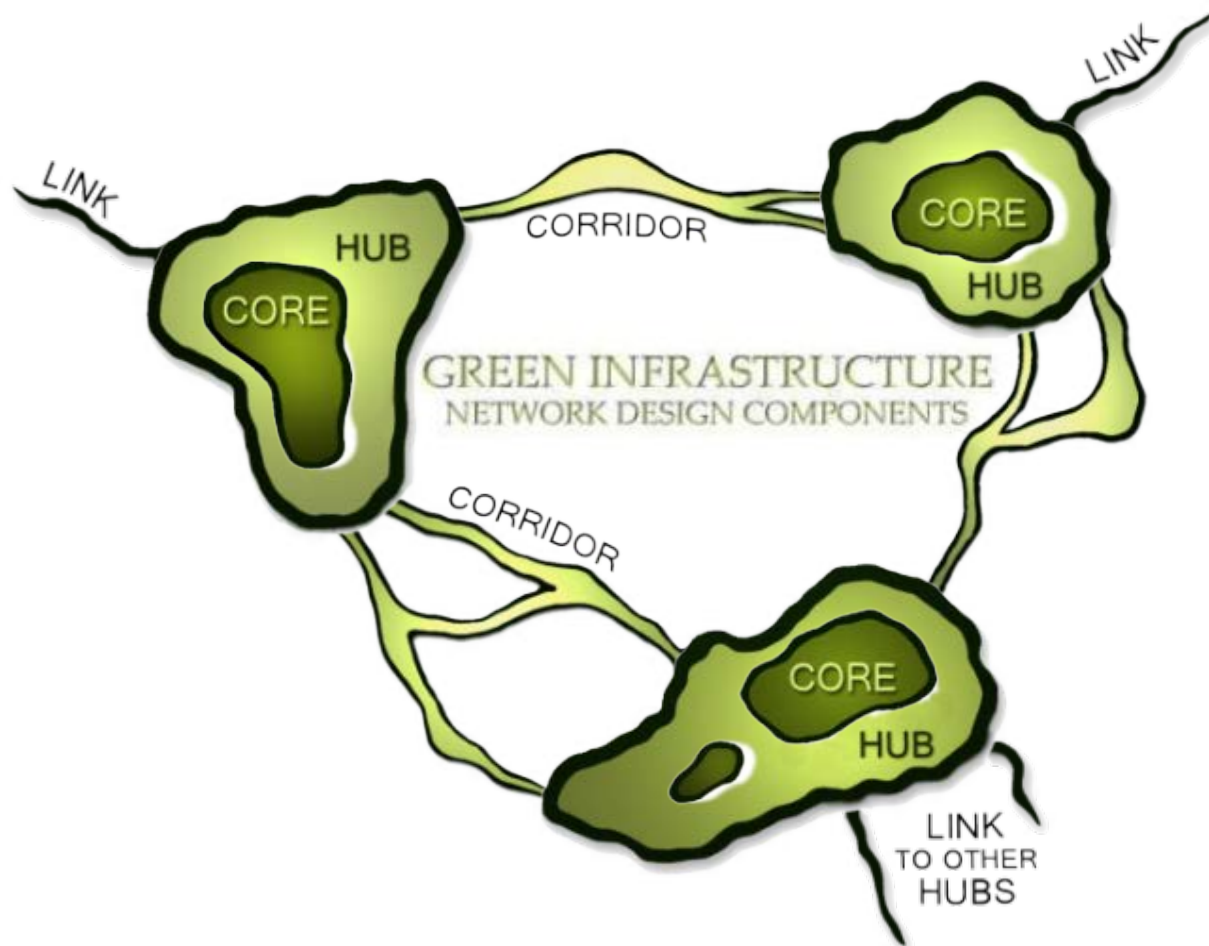


**Large,
national
projects**



A strategically planned and managed network of natural lands, working landscapes, and other open spaces that conserves ecosystem values and functions and provides associated benefits to human populations.





Cores:

- Contain fully functional natural ecosystems
- Provide high-quality habitat for native plants and animals

Hubs:

- Slightly fragmented aggregations of core areas, plus contiguous natural cover

Corridors:

- Link core areas together
- Allow animal movement and seed and pollen transfer between core areas

Sites:

- Important microhabitats not captured by network thresholds and criteria

Natural Ecosystem Values and Functions

<u>Attributes</u>	<u>Examples of places</u>	<u>Examples of functions</u>
Ecological communities	Parks, preserves, and reserves	Protect and restore native plants and animals
Fish and wildlife resources	Wildlife refuges, game reserves, wildlife corridors. Streams, lakes	Provide habitat for wildlife, support migration,
Watersheds and water resources	Riparian lands, wetlands, groundwater recharge	Protect and restore water quality, aquatic habitat
Working landscapes with ecological values	Forestlands, rangelands, and farmlands with native habitat, working lands with restoration potential	Habitat for fish and wildlife, connecting and/or buffering network components

Associated Benefits to Human Populations

<u>Attributes</u>	<u>Examples of places</u>	<u>Examples of functions provided</u>
Recreation and health resources	Parks, greenways, trails	Encourage exercise, connect with nature, disease vector prevention
Cultural resources	Historic/interpretive sites, outdoor classrooms	Preserve link to natural and cultural heritage
Growth pattern and community character	Greenbelts, scenic vistas, viewsheds, greenways	Guide patterns of growth, foster community
Water resources	Wetlands, floodplains	Protect water quality and quantity, manage stormwater
Working lands with economic values	Farms, orchards, ranches, managed forests	Protect working lands as a business, maintain rural character

A Science-Based Process that Brings Together:

- ✓ Natural resource, land planning and built infrastructure professionals
- ✓ Elected and appointed officials
- ✓ The interested public



- ✓ A program
- ✓ A short-term solution
- ✓ An isolated effort
- ✓ No growth or anti-development
- ✓ “Green” engineered structures





Green infrastructure helps us answer...

- Which lands to conserve?
- Where to permit development?
- Where to build roads and utilities?
- Where & how to select mitigation projects?



Green infrastructure benefits...

- **Proactive**
not reactive;
- **Systematic**
not haphazard;
- **Multi-functional**
not Single Purpose;
- **Multiple Scales**
not Single Scale, and
- **Scientifically defensible,**
transparent decision-making process

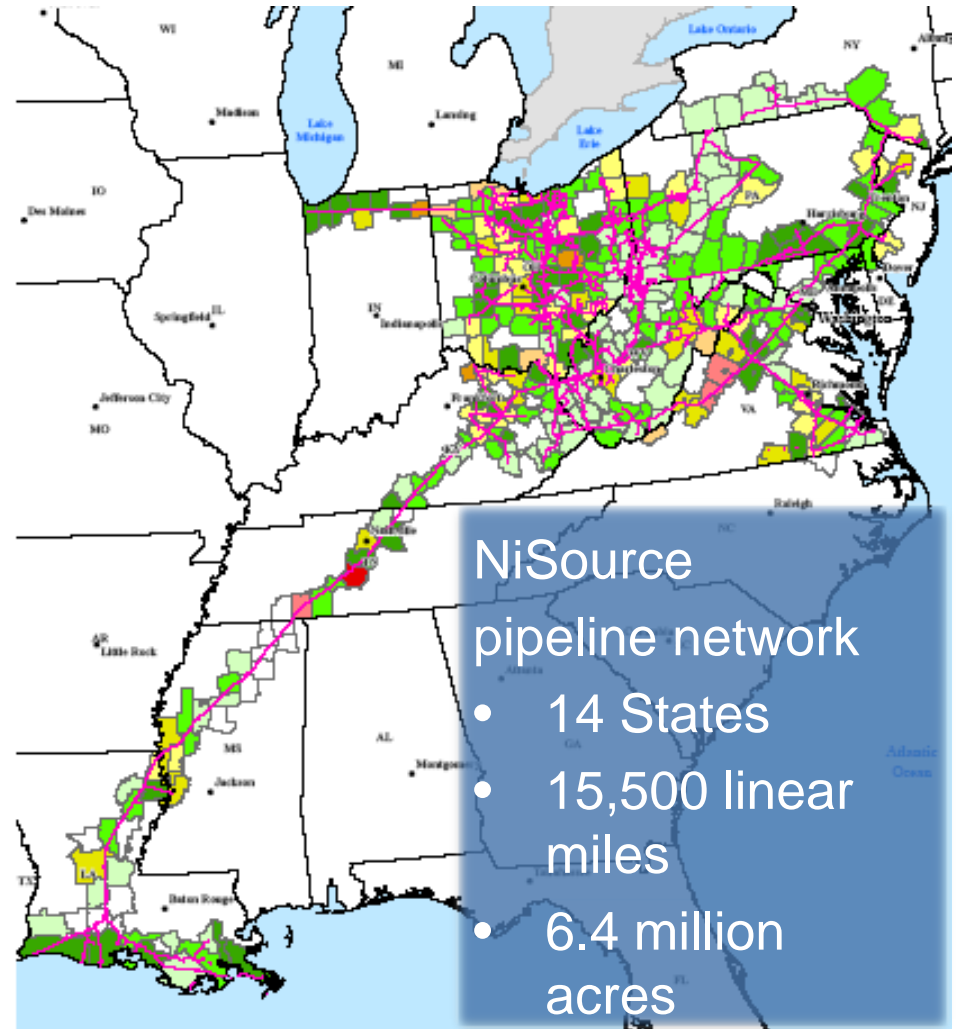
GI Network, Decision Trees & Optimization

NiSource

- Natural gas transmission company
- Operation and maintenance activities impact endangered species

U.S FWS

- Enforce Endangered Species Act
- Streamline project review while enhancing species protection



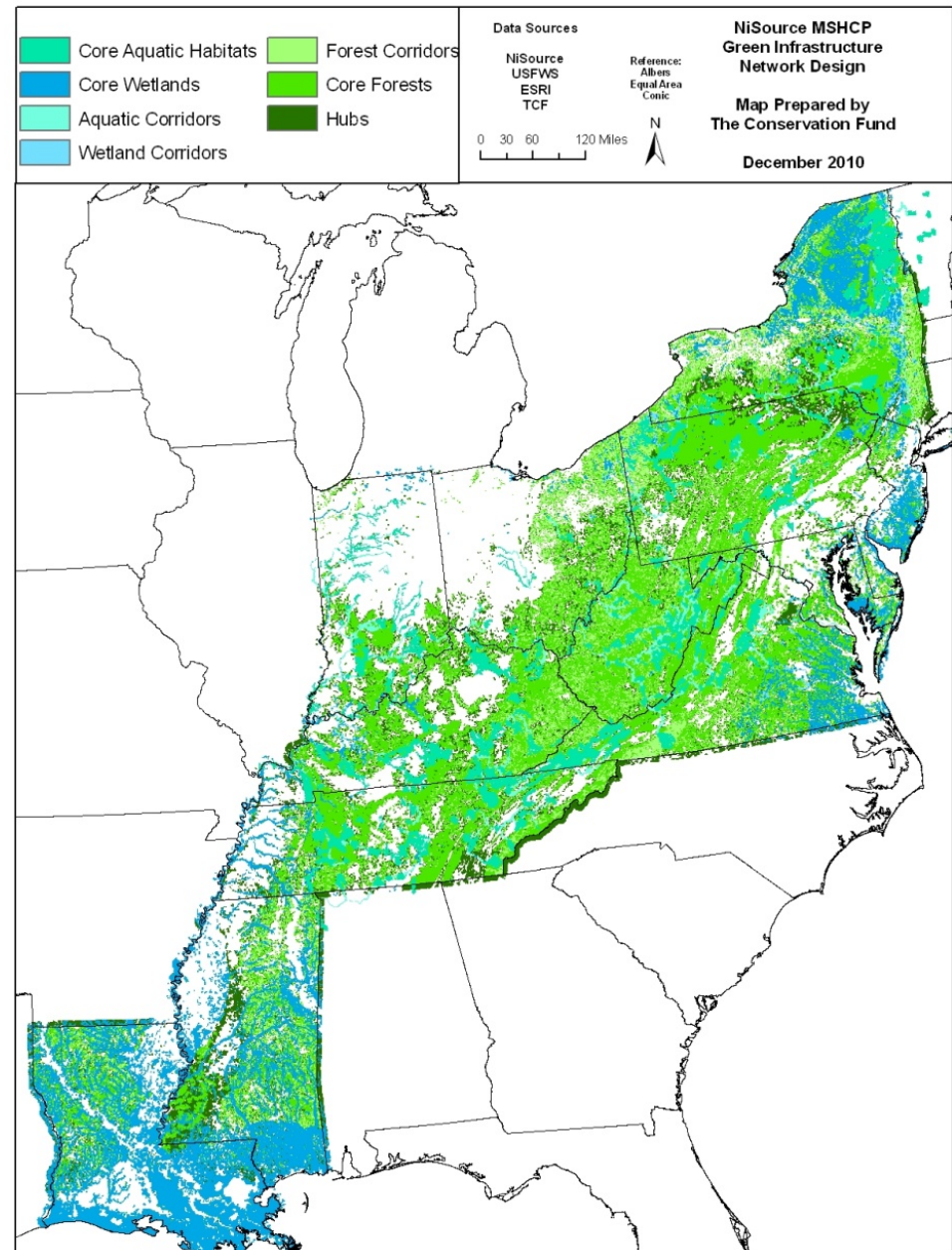
NiSource Green Infrastructure Project

Project Components:

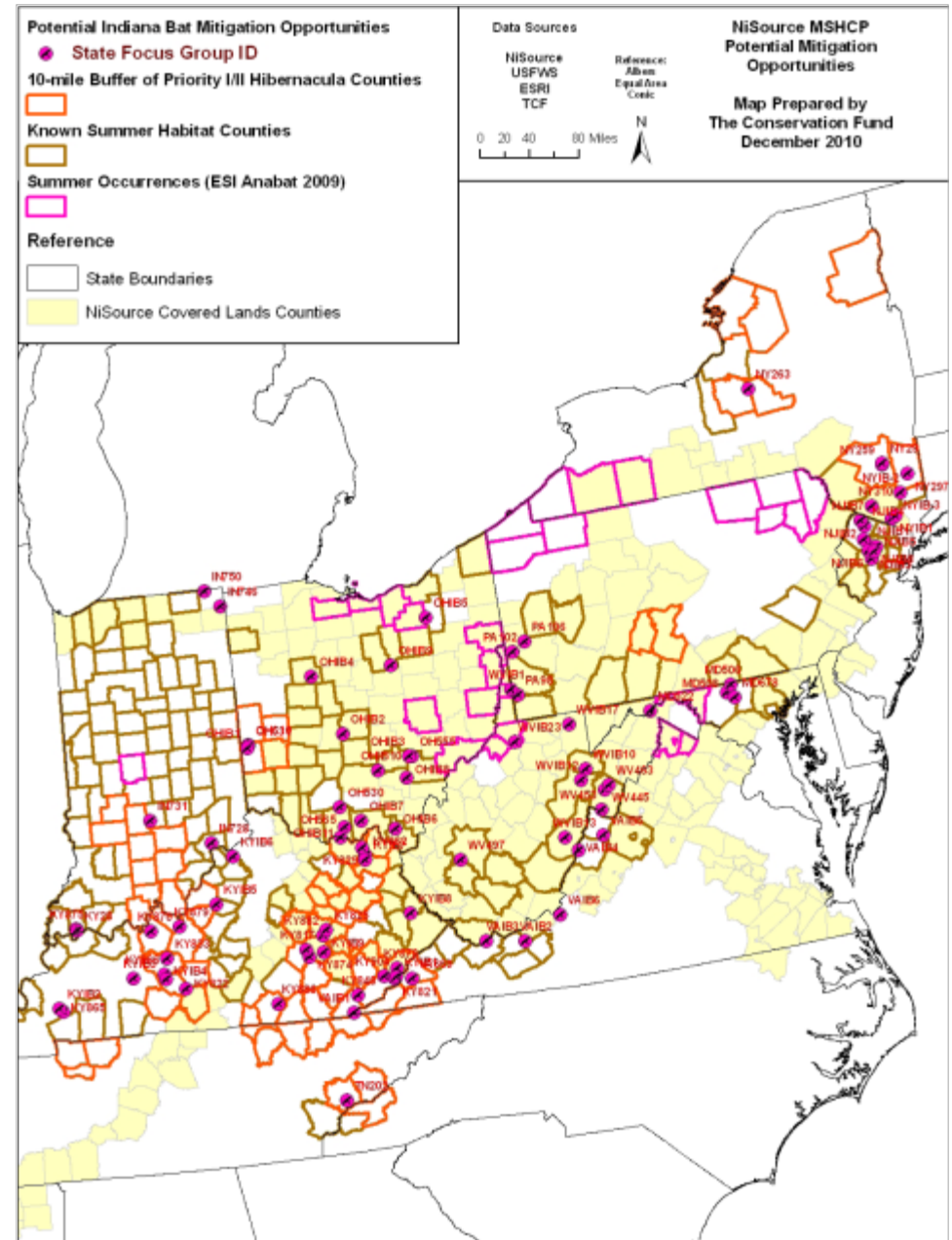
- Assess endangered species impacts across the entire pipeline network over the long-term
- Develop Multiple Species Habitat Conservation Plan
- Utilize **green infrastructure** approach to implement strategic mitigation

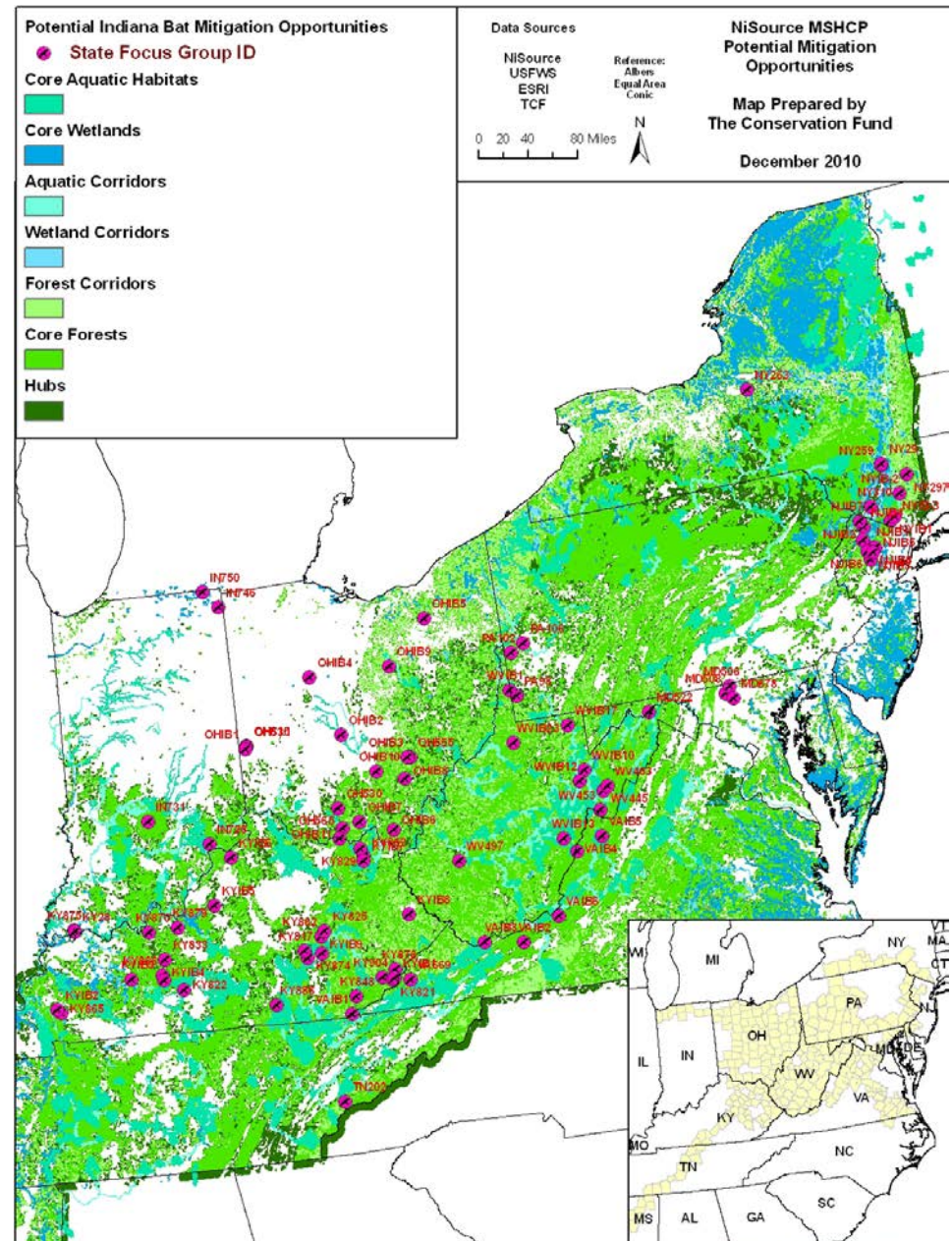


■ Identify a Network Design

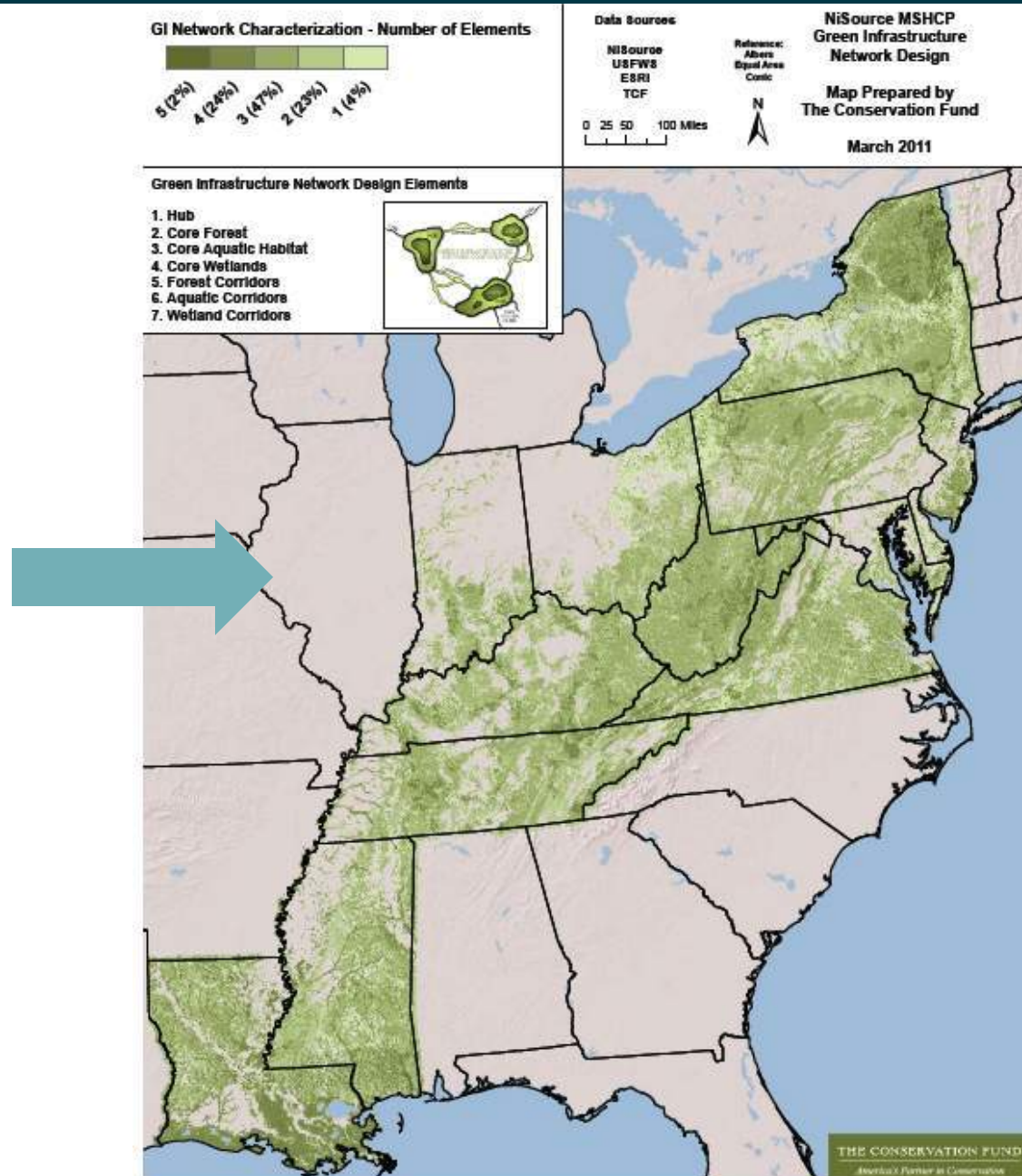


■ Identify Mitigation Opportunities Spatially

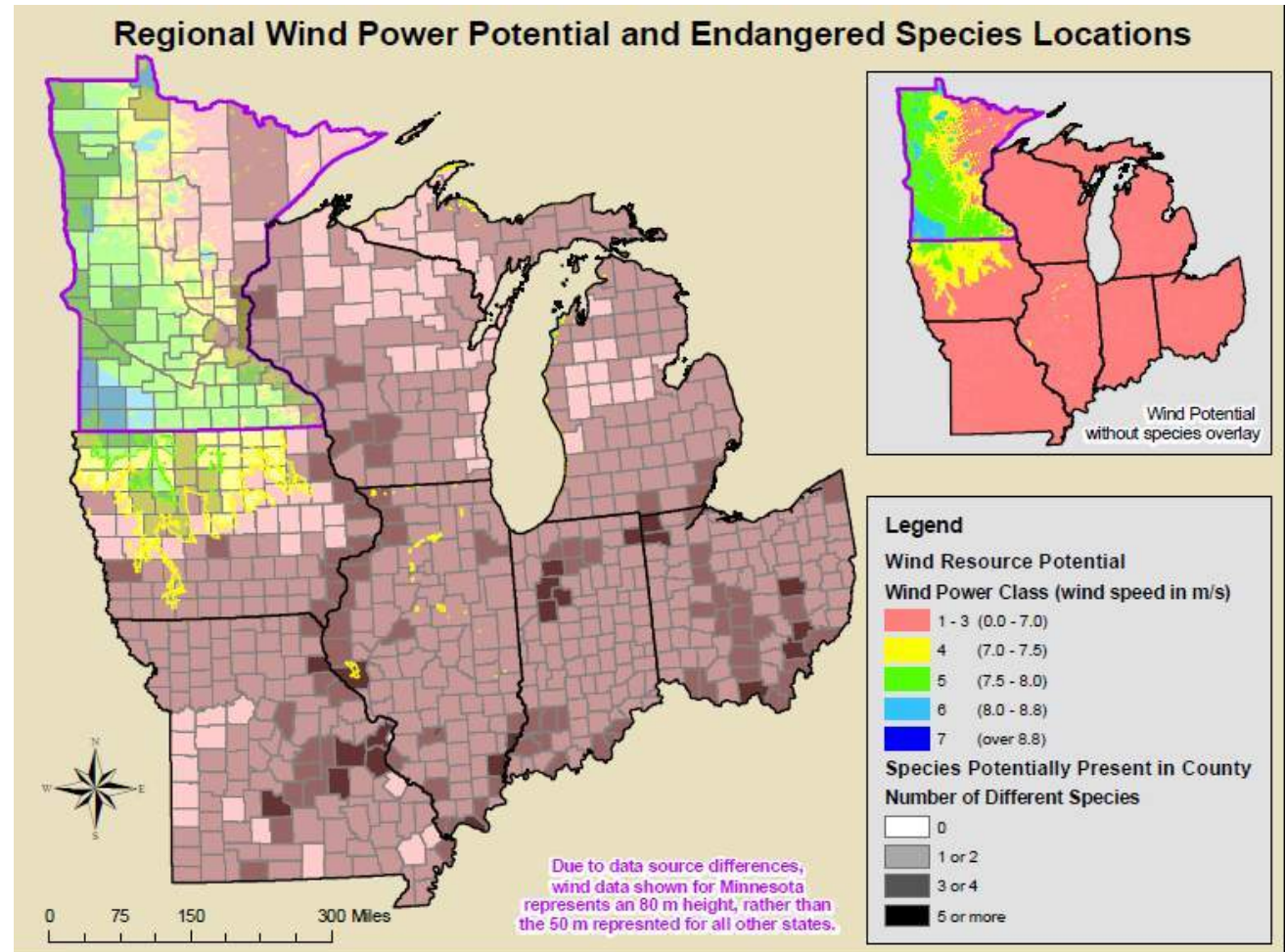




- Provides a framework for conservation and recovery actions of species across the HCP area extending beyond covered lands
- Evaluates potential mitigation opportunities within a strategically planned, interconnected network using consistent methodology & criteria
- Identifies other ecosystem benefits associated with potential mitigation projects



- 8 states
(FWS Region 3)
- Section 6 grant
to develop
green
infrastructure
network and
mitigation
framework
using NiSource
model



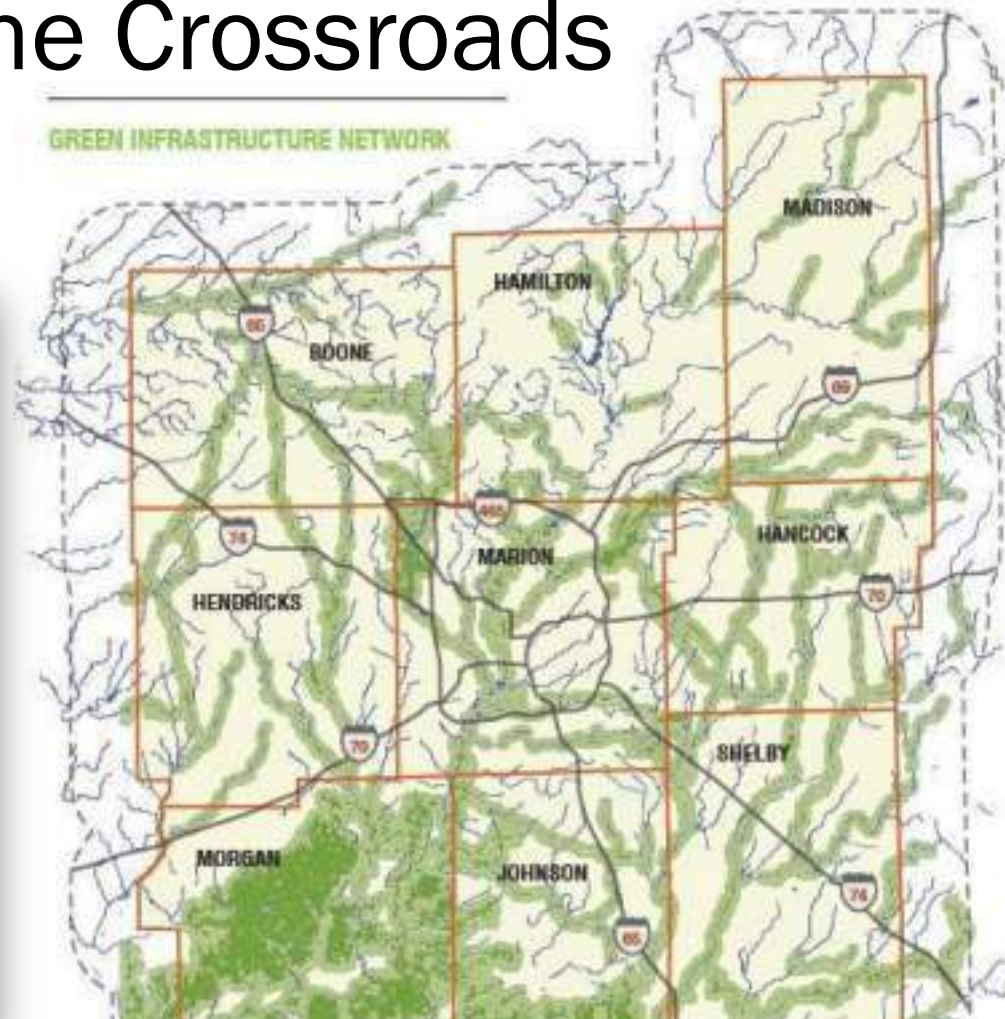
- Identifies best projects for implementation
- Holistic, regional approach
- Science based process
- Conservation and restoration
- Strategic use of industry mitigation dollars, leverage other funds
- Adaptable to multiple rules/frameworks – HCP, Corps, others...
- More predictability & certainty, business & regulatory



Nashville

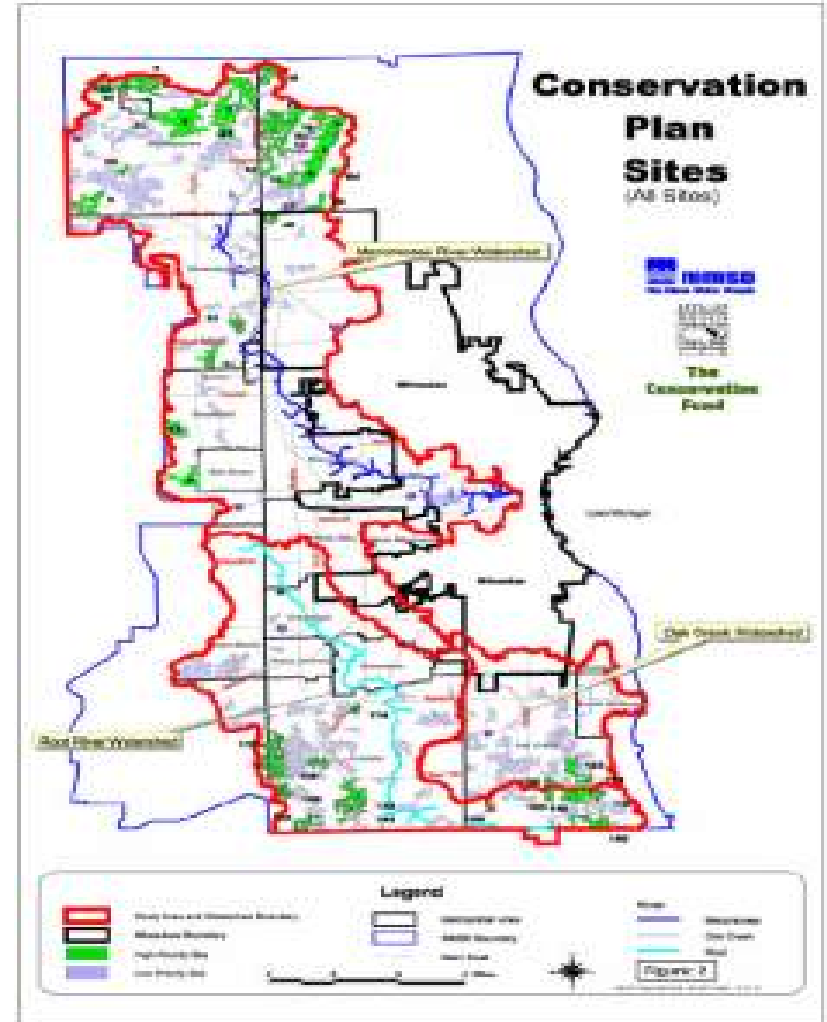
- *Nashville needs to be a city for families." Karl Dean
Inaugural Address
September 21, 2007*
- *"Green space and open space are a quality of life issue, an environmental issue and an economic issue," Karl Dean, January 7, 2010*

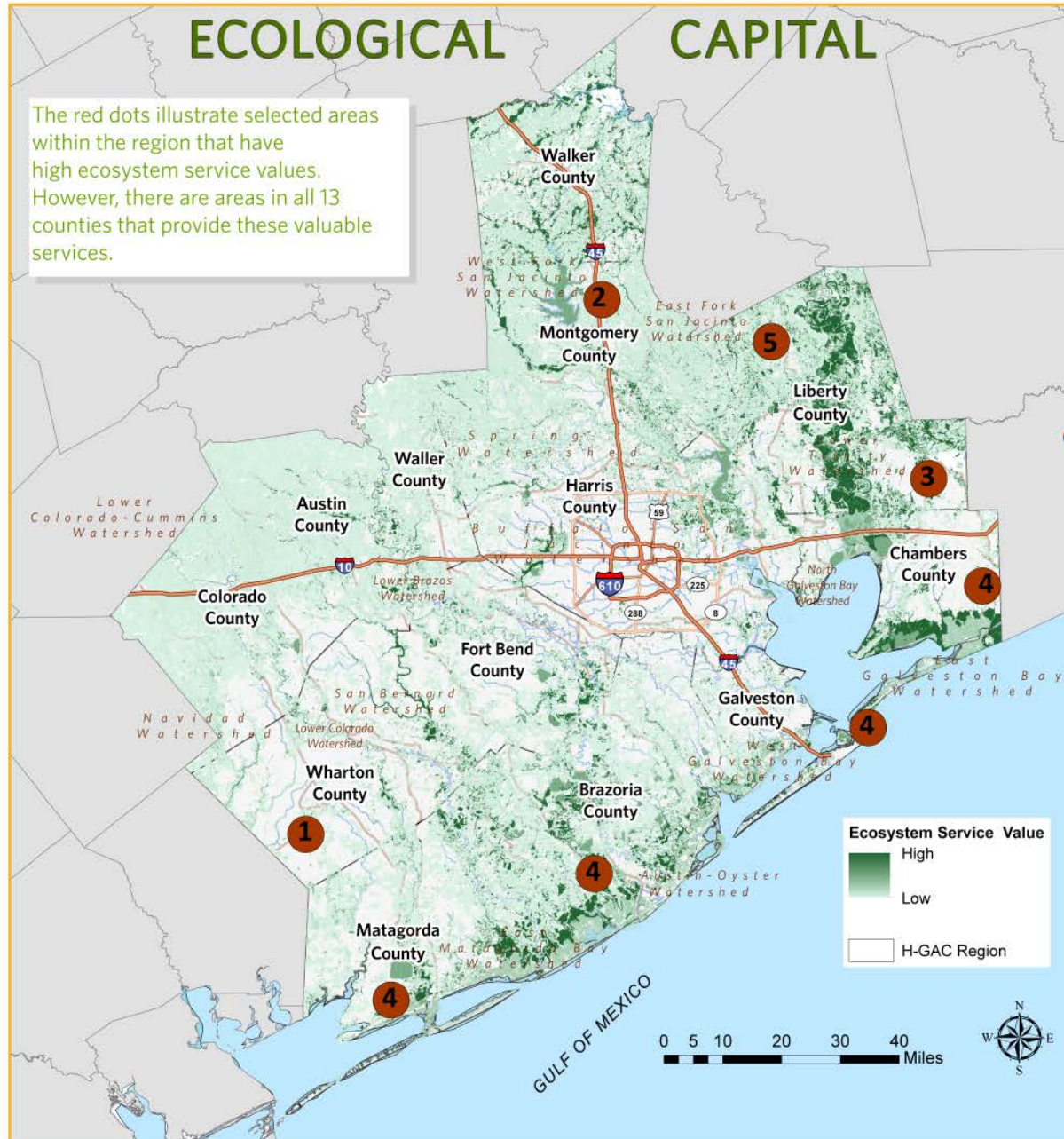
Central Indiana Land Trust: Greening the Crossroads

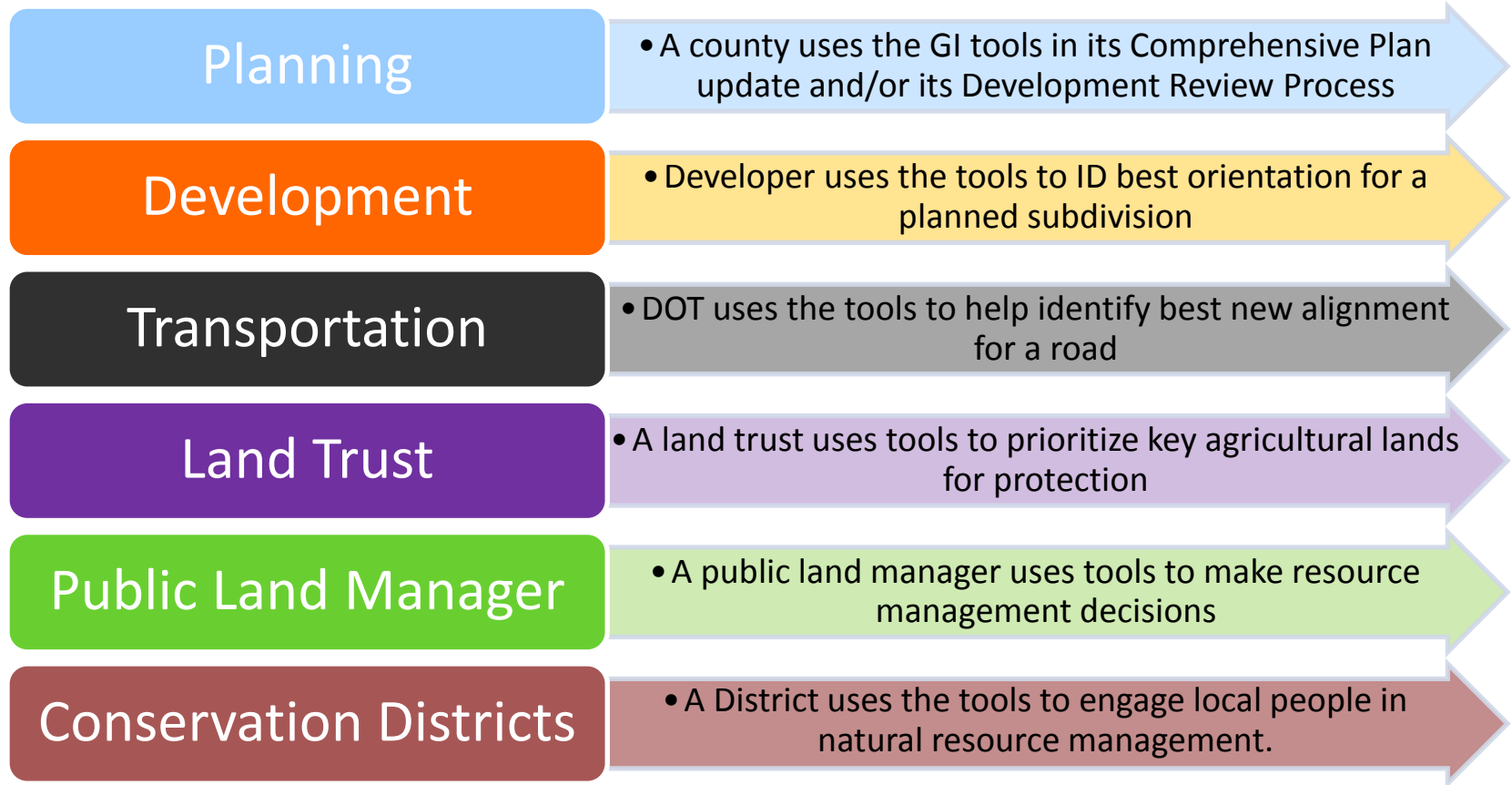


Milwaukee Metropolitan Sewerage District Conservation Plan

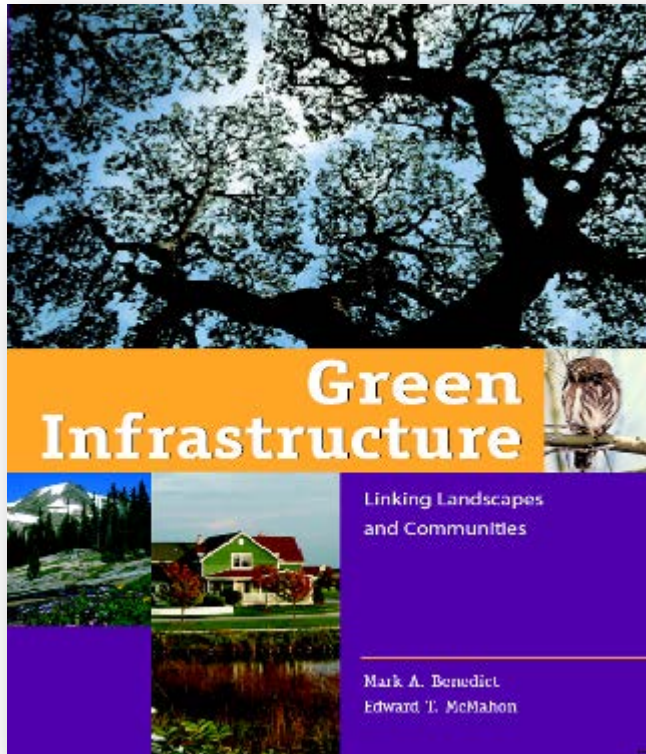
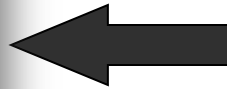
- Identifies and protects undeveloped sites to protect from future flooding
- Define development through conservation investments







Read the Book



Visit the Website

www.conservationfund.org



RESULTS	
Acres Protected to Date	7 million
Fair Market Value	\$5 billion
Conservation Programs	96%
Fundraising Costs	1%

RECOGNITION	
A+ Rating	American Institute of Philanthropy
Four Star Rating	Charity Navigator

