

# **SWCD Office: Teaching Tool for Sustainable Stormwater Management**

**Candace Stoughton  
East Multnomah Soil & Water Conservation  
District**



# Sustainable Urban Landscapes

## Conserve Water



## Reduce Maintenance



## Prevent Pollution



## Manage stormwater onsite



## Safe & enjoyable outdoor spaces for people, pets and wildlife



# Sustainable Urban Landscapes Program

*Introduces people to the benefits of low-impact, natural gardening:*

## FREE Naturescaping & Rain Garden Workshops

### Community Events

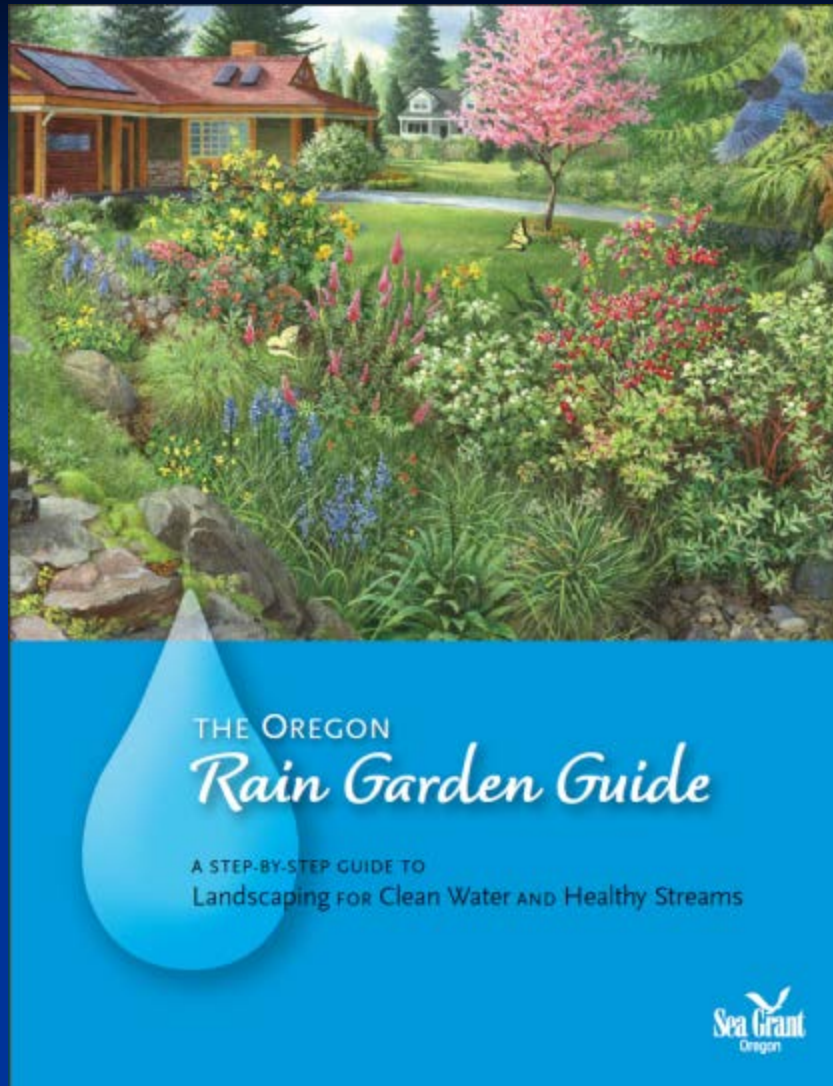
- Native Plant Sale
- Naturescaped Yards Tour



# Rain Gardens 101 workshop

## 💧 Workshop Agenda

- 💧 1<sup>st</sup> hr      Introduction to Stormwater Issues
- 💧 2<sup>nd</sup> hr      Site Assessment Hands On Exercise
- 💧 3<sup>rd</sup> hr      Construction/Design  
Challenging Sites; Slopes
- 💧 4<sup>th</sup> hr      Rain Garden Tour



Collaborated with OSU to create

# Sustainable Urban Landscapes Workshops

| SUL Workshops (FY 13-14) | Attendees |
|--------------------------|-----------|
| 58 workshops total       | 999       |
| 13 rain garden workshops | 280       |



# Workshops leading to action?



## Register your rain garden!

# Rain Garden Workshops

## Survey Results

|                    | fall 10 | 2011 | 2012 | 2013 |
|--------------------|---------|------|------|------|
| Response rate      | 37%     | 32%  | 32%  | 32%  |
| % plan to build RG | 89%     | 72%  | 85%  | 68%  |
| % have built RG    | 47%     | 36%  | 43%  | 34%  |



# Rain Garden Installation Workshops



**Short recap of rain garden basics**



**Build a rain garden!**

# Rain Garden Incentive

Build a rain garden; Get \$200

Targeting areas where stormwater drains directly to streams

Inspections:

- Initial site assessment
- Final inspection



Door to door canvassing this summer to increase participation

# Rain Garden class for Contractors

## Participants:

- Landscape contractors
- Local government officials
- Landscape architects
- Architects
- Building contractors



# LID Practices in Action



**2008-Newly purchased office bldg. for EMSWCD**





← During

Newly  
Installed  
Landacaping  
→







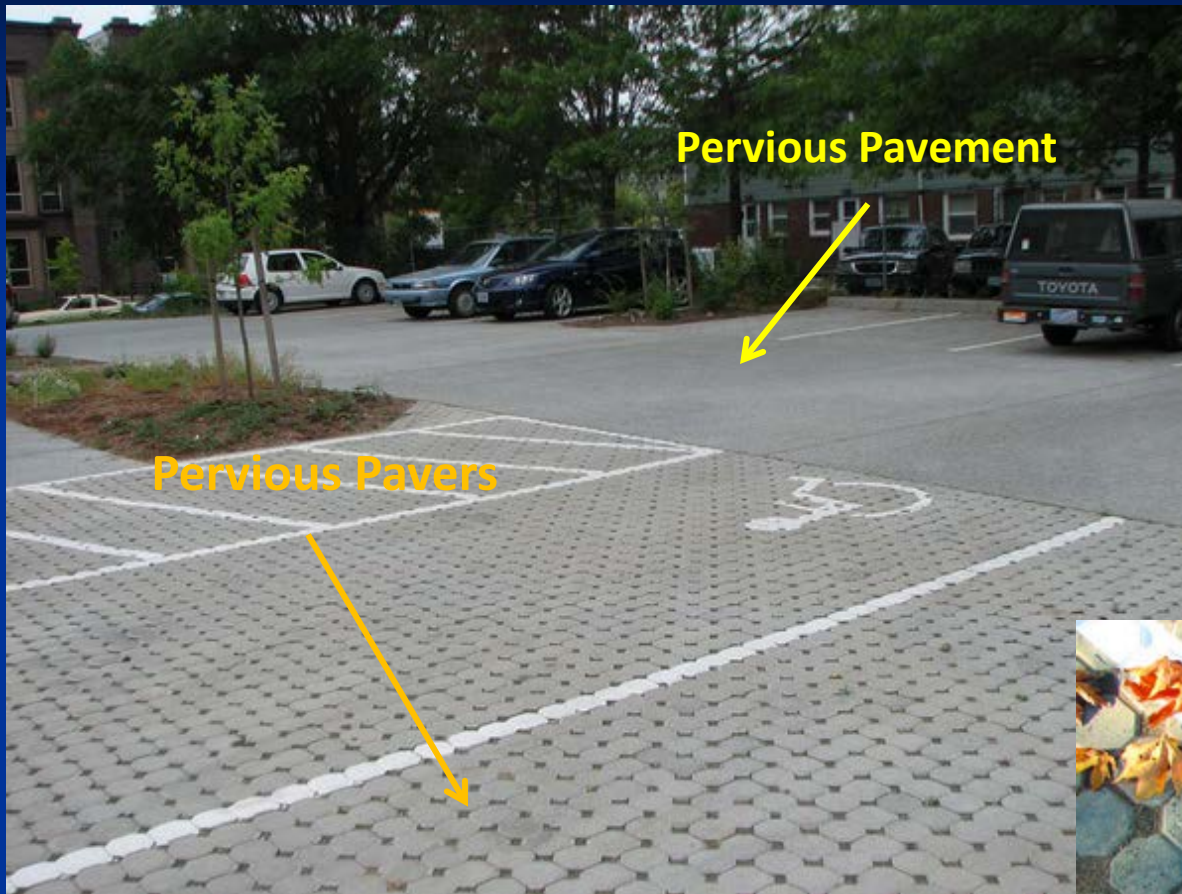




# Rain Gardens



# Pervious Parking Lot/Walkways





# Pervious Paths



**Designed to be ADA accessible**

# Ecoroof/Green Roof



# Installed in 2009



# Ecoroof/Green Roof

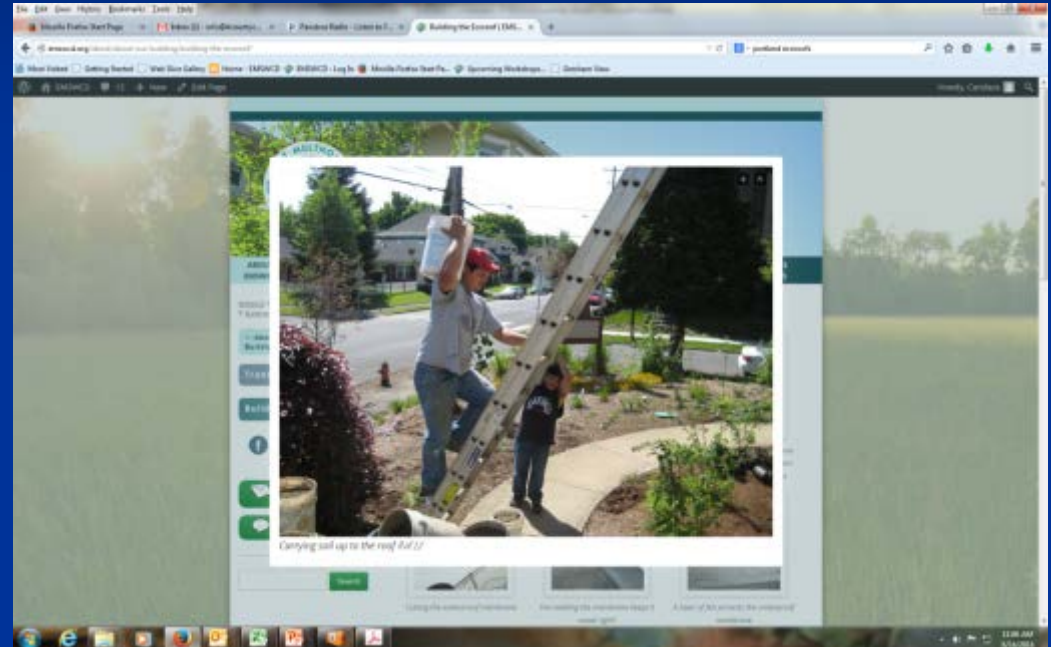




# Information about our ecoroof



Interpretive signage



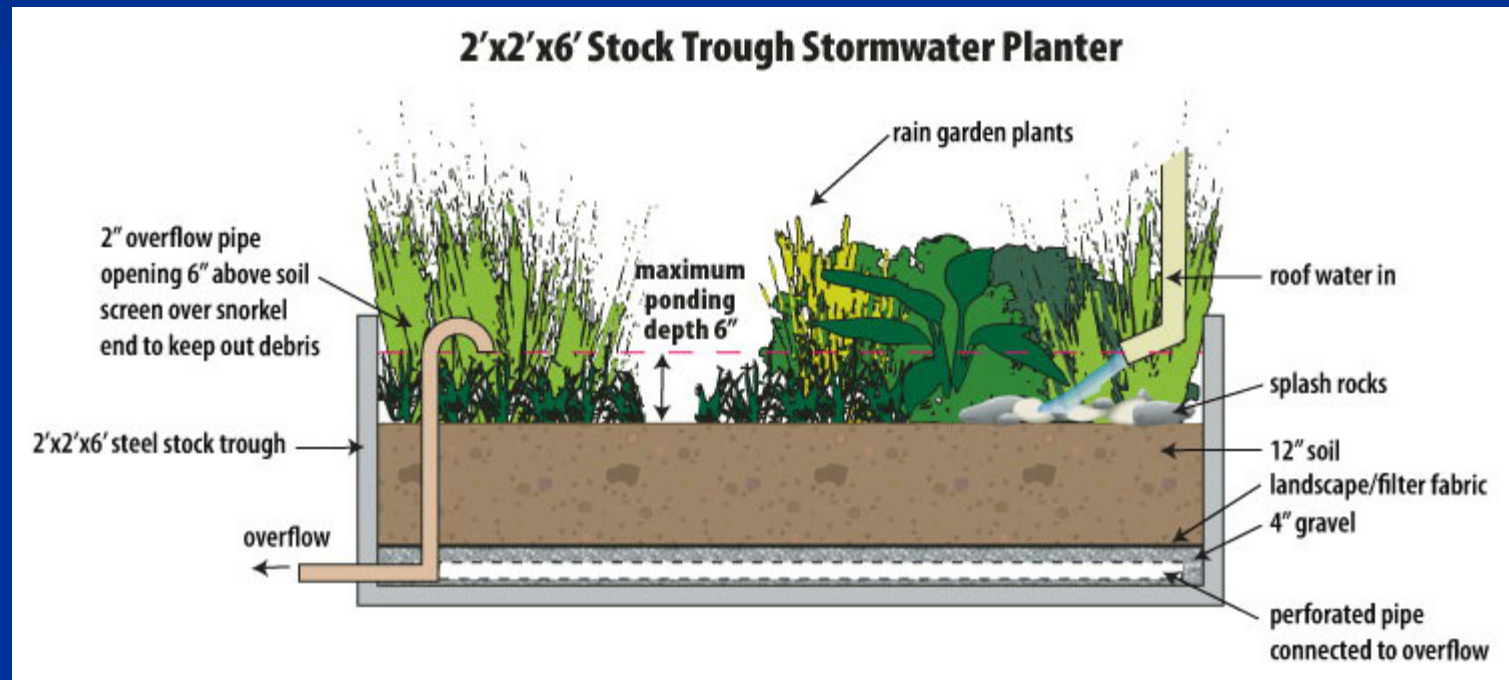
Ecoroof slide show on website

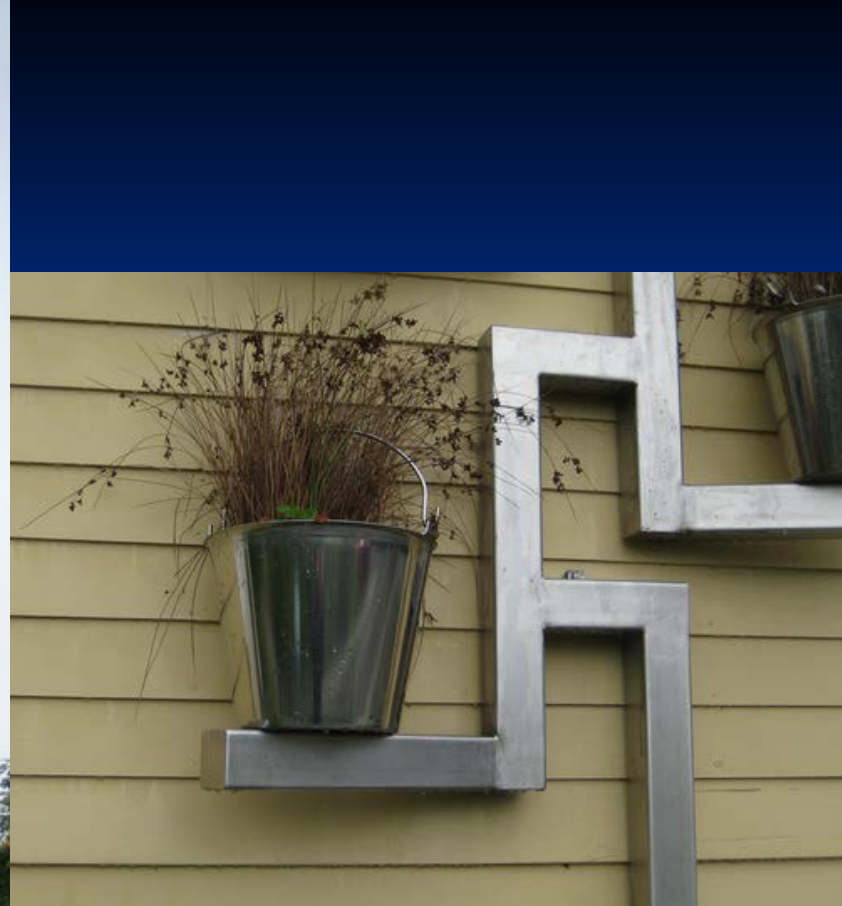


# Stormwater Planter



# Stormwater Planter





**‘Bucket Brigade’  
Downspout Planter,  
EMSWCD Office**





**Bottom bucket drains to rain garden**

# Covered Bike Parking



# No-soil Ecoroof



# Composting Toilet





# Composter in the basement



# Next project?

## Graywater for outdoor irrigation



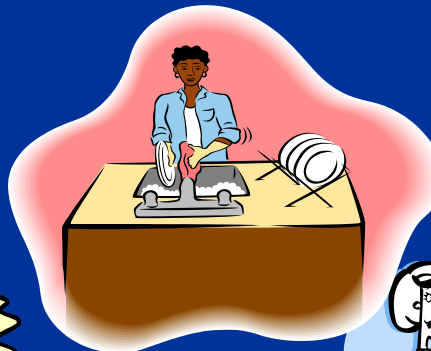
Photos from  
*San Francisco  
Graywater  
Design  
Manual for  
Outdoor  
Irrigation*

# What is graywater?

Graywater means shower and bath wastewater, bathroom sink wastewater, kitchen sink wastewater, and laundry wastewater.

Graywater does not mean toilet or garbage wastes or wastewater contaminated by soiled diapers.

[ORS 454.605]





# Tours of the property

- College classes
- Garden clubs
- Community groups



# Annual Native Plant Sale at EMSWCD



# Interpretive Signage

Dobrodošli! أهلا وسهلا Welcome! 歡迎!! Benvenuto! مرحبا

## Explore our yard!

We've made lots of changes here to bring more nature in, conserve water, reduce pollution in our rivers and streams, and help us save time and money. You can too!

### See for yourself!

Walk around and discover how to make your yard a healthy, beautiful place for the people, pets and wildlife in your neighborhood.

Native plants support, and protect the environment, and keep the runoff from polluting our land and streams.

Native plants provide food, water, and shelter for birds, butterflies and other wildlife.

Gardening without chemicals is good for everyone in your yard, home, and neighborhood.

Remove invasive plants before they get out of hand.

We help you care for your land.

### Getting started is easy!

We offer free workshops. Find out more at [www.emswcd.org](http://www.emswcd.org)

Soo dhaawow! 반갑습니다! Welkom! أهلا وسهلا Кітамову! добро пожаловать!

## Naturescape for less work and less worry.

By gardening with native plants we use less water, use no chemical fertilizers and pesticides, and require less maintenance. We call it naturescaping.

### Watch your yard come to life!

Birds, bees, and butterflies started showing up after we removed invasive weeds and replaced the lawn with native plants. Now they visit all the time to eat pests and pollinate flowers.

### Keep chemicals out.

Relax knowing your family and pets are not tracking hazardous chemicals into the house.

Find out more about naturescaping at [www.emswcd.org](http://www.emswcd.org)

## Contain the rain!

Rainfall picks up pollutants on the way to our streams. Catch the rain instead by building a rain garden.

A rain garden is a sunken garden bed that soaks up runoff from roofs, driveways, and other hard surfaces.

Plants and soil filter the water as it soaks in.

Plants use the water to grow.

roof water or other runoff

pollutant-soaking depth

amended soil

undisturbed soil

Absorbing the rain recharges groundwater.

Rain gardens help prevent excessive flooding in our streets and streams.

Rain gardens help keep local streams clean and healthy.

You can learn how to build a rain garden! Find out more at [www.emswcd.org](http://www.emswcd.org)



# Thank you!



[www.emswcd.org](http://www.emswcd.org)