

Construction Site Runoff Control: The SWCD Role in Elkhart County, Indiana



Eric Kurtz, Stormwater Coordinator

Elkhart County SWCD

www.elkcoswcd.org

www.stormwaterelkco.org

Outline

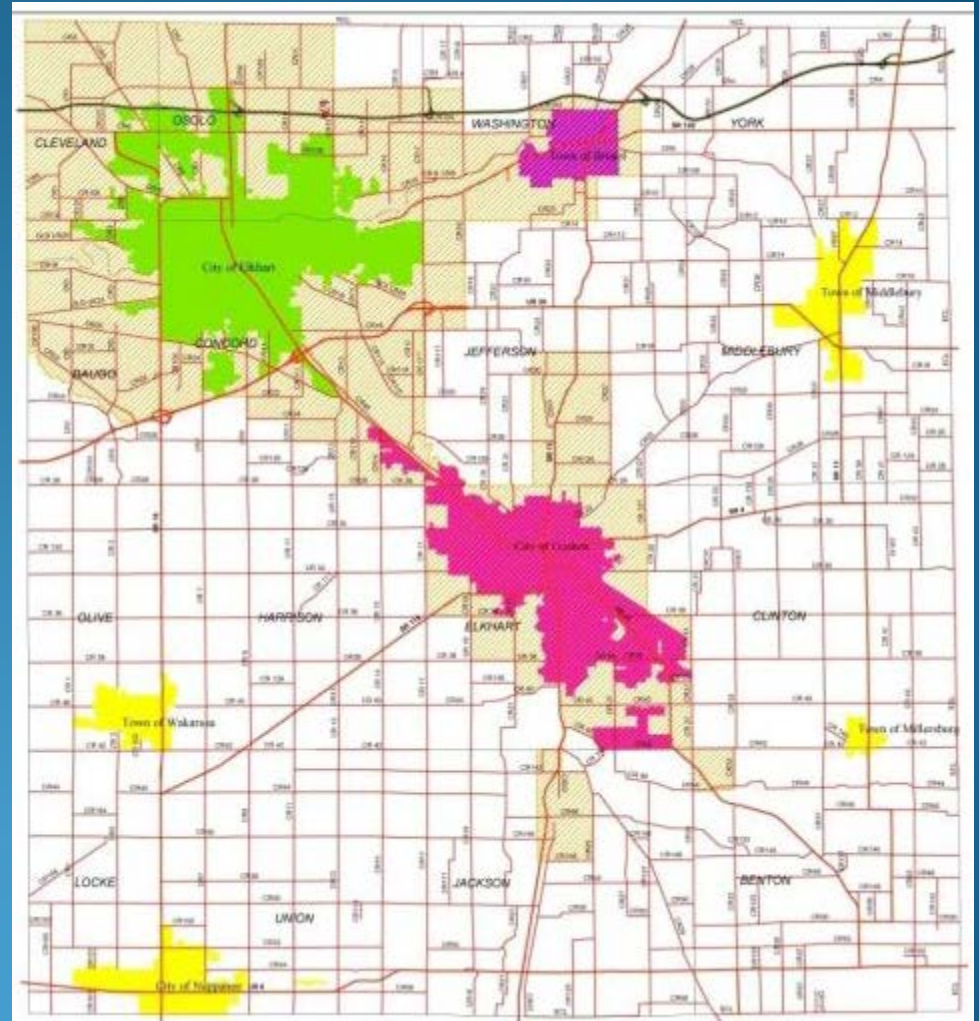
- Elkhart County SWCD role in MS4 Partnership
- Construction BMPs
- Why this is good for...
 - MS4s
 - The Public
 - SWCDs

History

- 1992: Indiana Phase I Stormwater Program
 - Cities over 100,000 (Indianapolis)
 - Construction sites over 5 acres
- 2003: Indiana Phase II Stormwater Program
 - Cities over 7,000 and urbanized areas
 - Construction sites over 1 acre

Elkhart County Stormwater Partnership

- City of Elkhart
- City of Goshen
- Town of Bristol
- Elkhart County



Six Minimum Control Measures

- Public Education
- Public Participation
- Illicit Discharge
- Construction
- Post-Construction
- “Good Housekeeping”

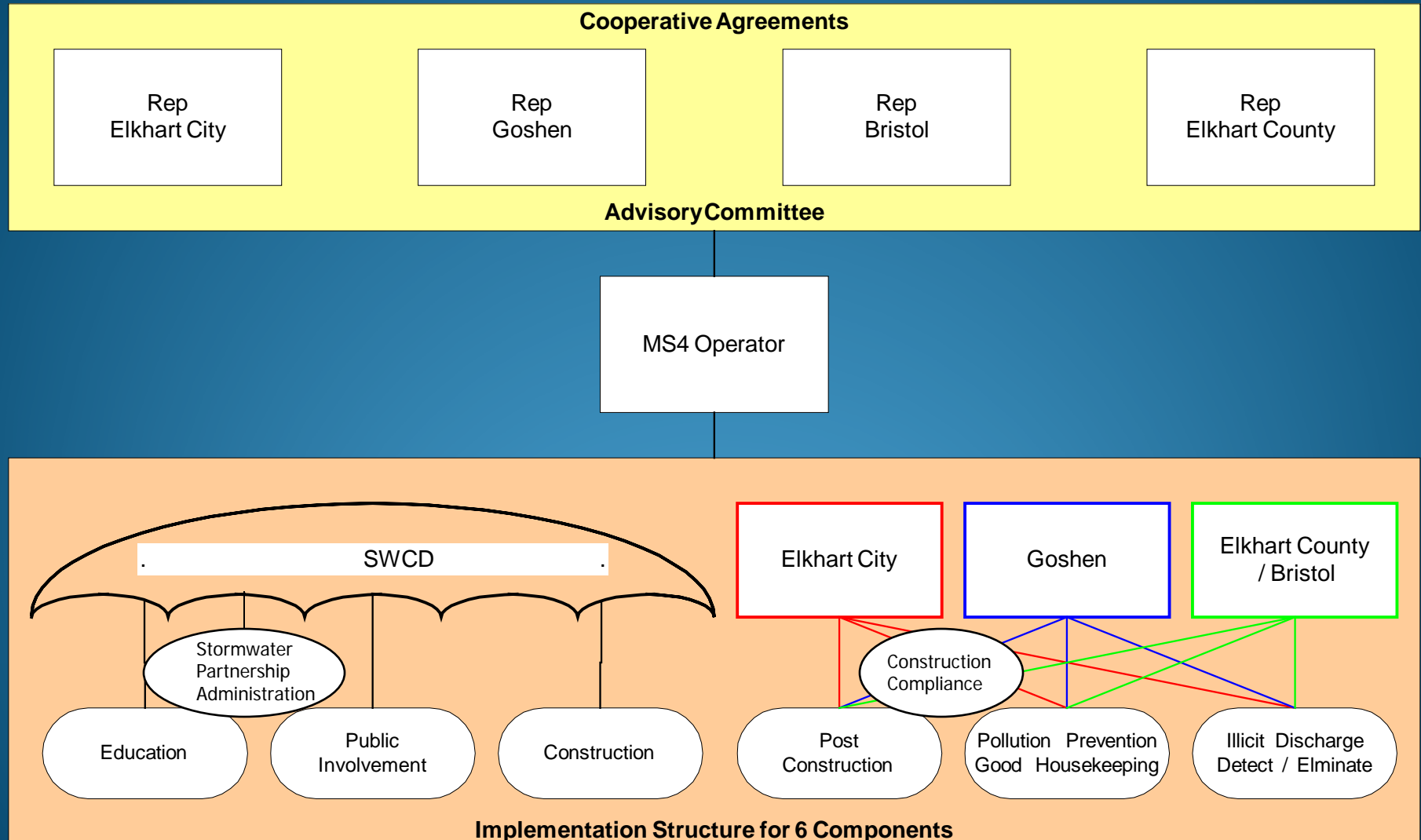


Photo courtesy NRCS

Goals for Cooperative Approach

- Coordinated, county-wide approach to implementation of programs
- A more efficient, cost-effective system for taxpayers

Responsibilities of Each Entity



Construction Best Management Practices (BMPs)



- Submit and follow a SWPPP: Stormwater Pollution Prevention Plan
- Self-inspection weekly and within one business day after every half-inch rain by “trained individual”
- Maintenance

Construction BMPs

- Stable construction entrance/exit



Construction BMPs

- Temporary & Permanent Stabilization



Construction BMPs

- Perimeter Protection



Construction BMPs

- Minimize disturbance and protect sensitive areas



Construction BMPs

- Inlet and Outlet Protection



Construction BMPs

- Material Handling & Spill Prevention including Concrete Washout



Construction BMPs

- Dewatering



Construction BMPs

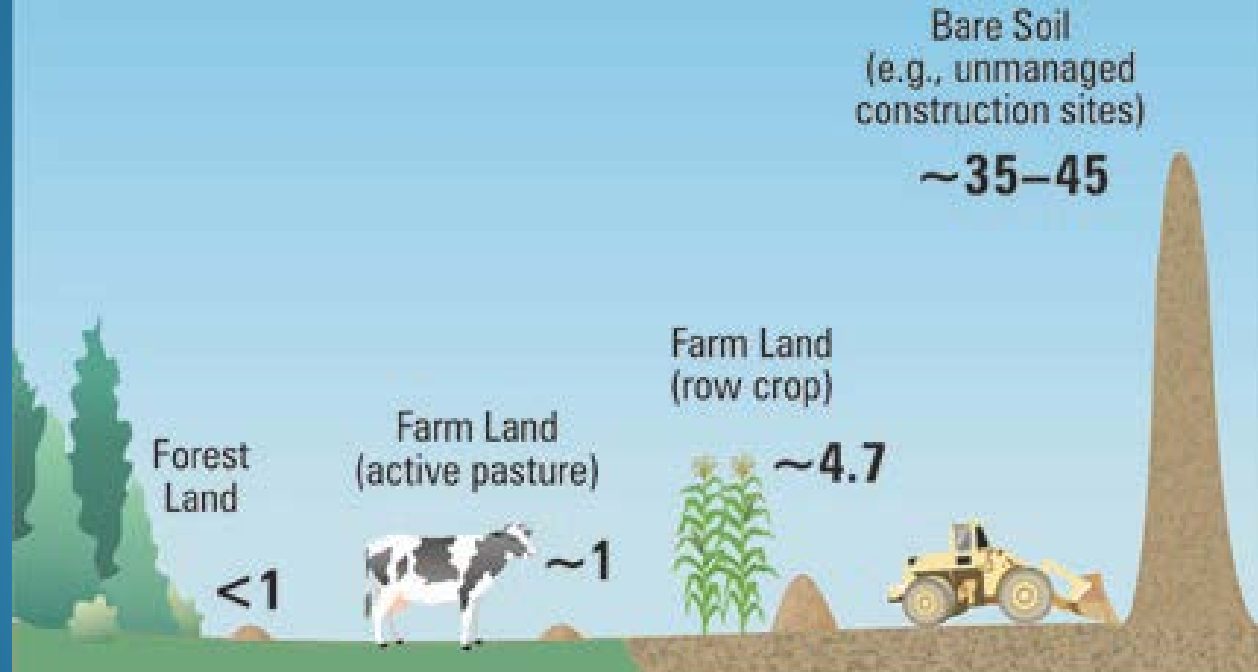
- Individual Lots in a Subdivision



Why does this matter?

Typical erosion rates for land-based activities

(soil loss from various land areas, in tons per acre per year)



Why working with the SWCD is good for MS4s

- Larger pool of expertise to draw from
- Cost-effective



Why this is good for the public

- Even implementation and efficiency (saves money)
- Local decisions and control
- From NACD website: “The association was founded on the philosophy that conservation decisions should be made at the local level with technical and funding assistance from federal, state and local governments and the private sector.”
- Clean water is good for everyone!

Why this is good for the SWCD

- Addresses a local natural resource concern
- Addresses a key constituency in our community (urban and suburban)
- Raises visibility of the SWCD as a place to go for natural resource expertise



Some things we've done



- Contractor Training
- Urban Conservation award

Why isn't it done more?

- This is an urban program
- This is a regulatory program

Questions?

Eric Kurtz – Stormwater Coordinator
Elkhart County Soil & Water Conservation District
574-533-3630, ext. 3
eric.kurtz@in.nacdnet.net
www.elkcoswcd.org
www.stormwaterelkco.org

Photo courtesy NRCS