

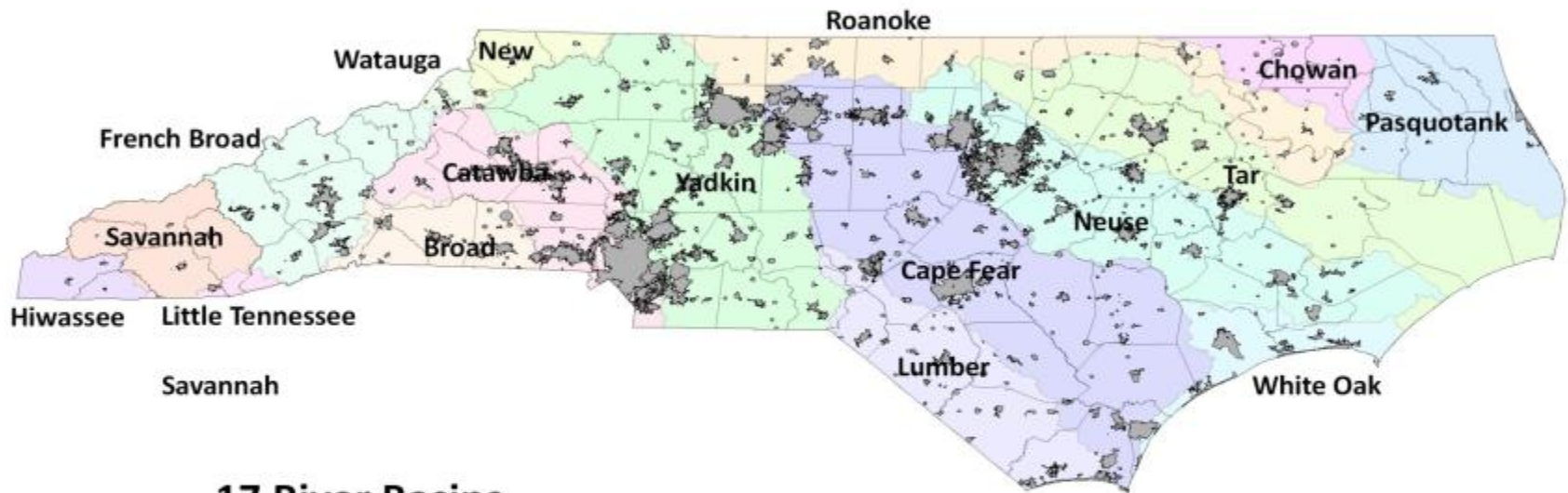
The Community Conservation Assistance Program (CCAP) in North Carolina



Background on the State and Water Quality Issues

- 17 River Basins
- 550+ Municipalities
- 9,765,000 Residents
- 13 Congressional Districts (13th created in 2002)
- Fish Kills in the 1980s led to public outcry
- Nutrient Sensitive Waters and subsequent rules developed to address

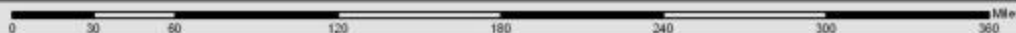
River Basins of North Carolina and Municipal Boundaries



17 River Basins
550+ Municipalities
9,765,000+ Residents
13 Congressional Districts

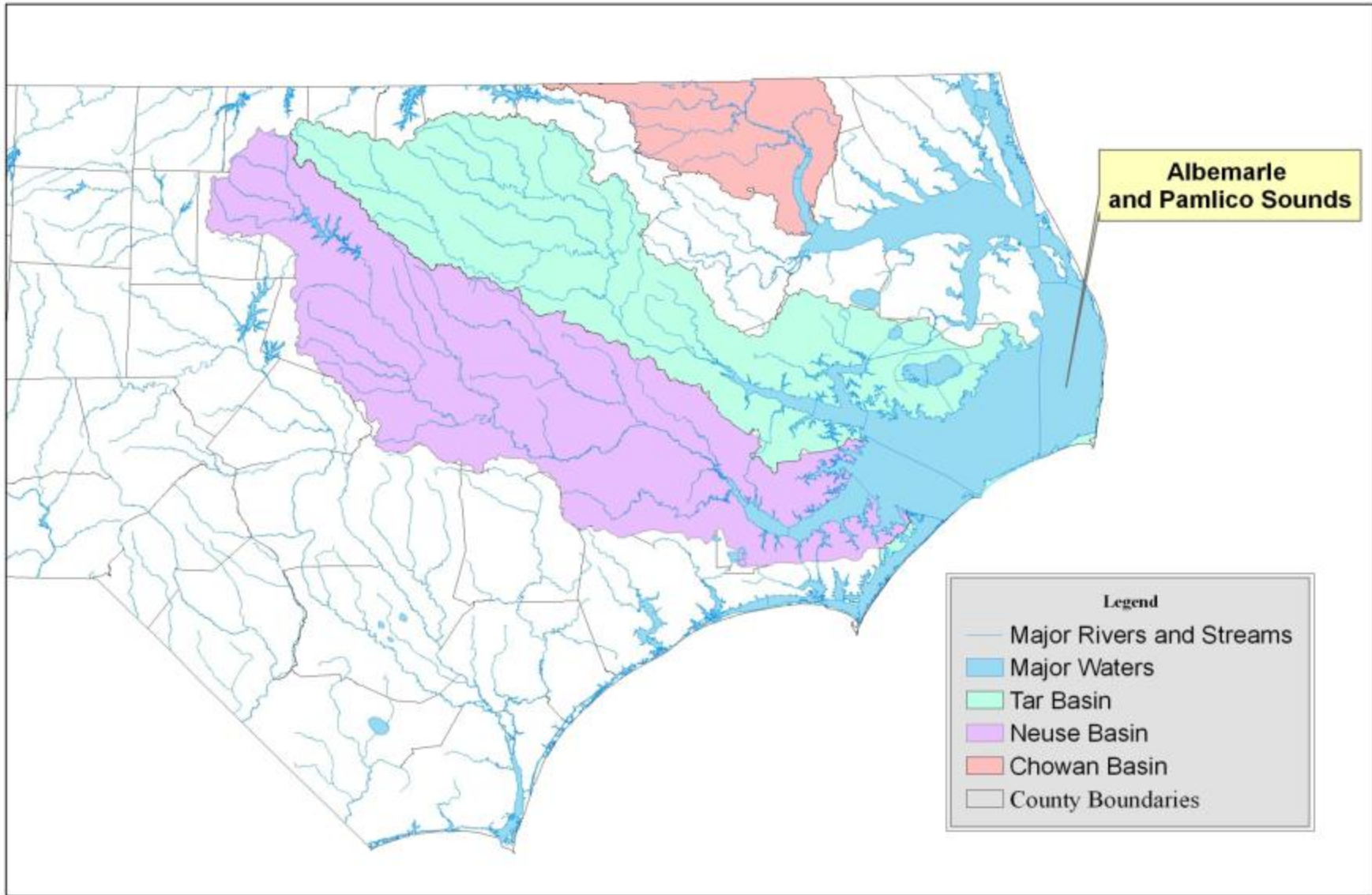


North Carolina's River Basins
and Municipal Boundaries



Water Quality Issues

- Nutrient Sensitive Waters established in the early 1980s
- Chowan, Neuse, and Tar-Pamlico River Basins
- Linked both nitrogen and phosphorus loading to WQ issues
- Some voluntary, some mandatory reductions
- Ag Cost Share Program established in 1984



Nutrient Sensitive Waters



Soil and Water Conservation

- ACSP pertained only to the NSWs until:
- Program expanded statewide in 1992
- Through FY2012, there have been 56,135 contracts affecting 2.6 million acres
- ~7.3 million tons/soil saved annually
- Robust database tracks all contracts and associated reductions
- Recently moved to online contracting system

The Move to Urban Issues

- Charlotte the only municipality that was affected by 1990 NPDES Phase I
- NC addressed Phase II in 2006
- >3,300 permits have been issued
- Virtually all “urban” streams are impaired
- Over the years, many NC S&W districts involved in urban issues including S&E plan review



The CCAP Program

How it Began

Local district champions

Mecklenburg S&WCD

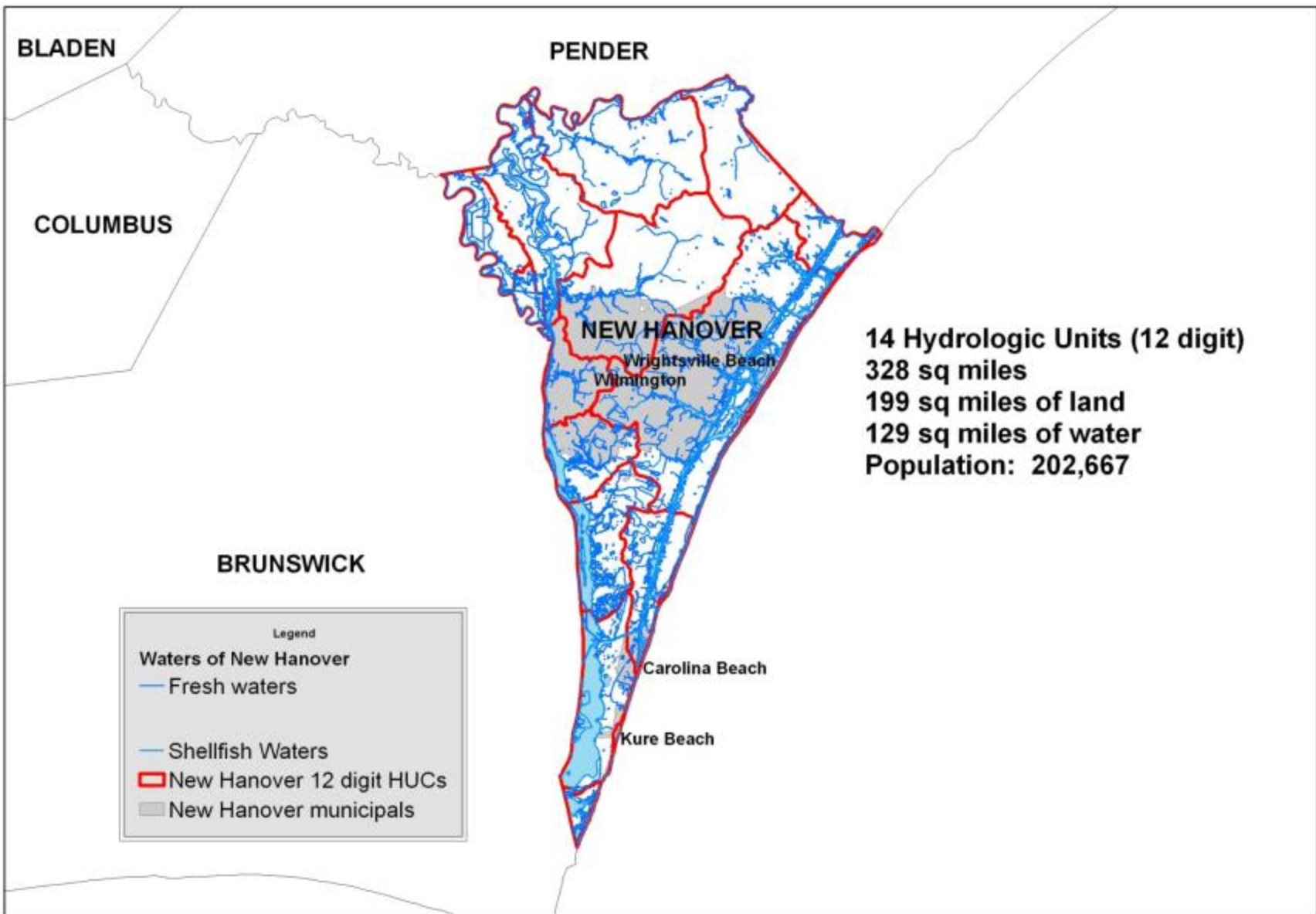
New Hanover S&WCD

Mecklenburg District

- Hired an Urban Conservationist
- Began Urban Conservation Program in 2004
- Focus on urban Briar Creek watershed
- Funded by the City of Charlotte and a grant from the Clean Water Management Trust Fund

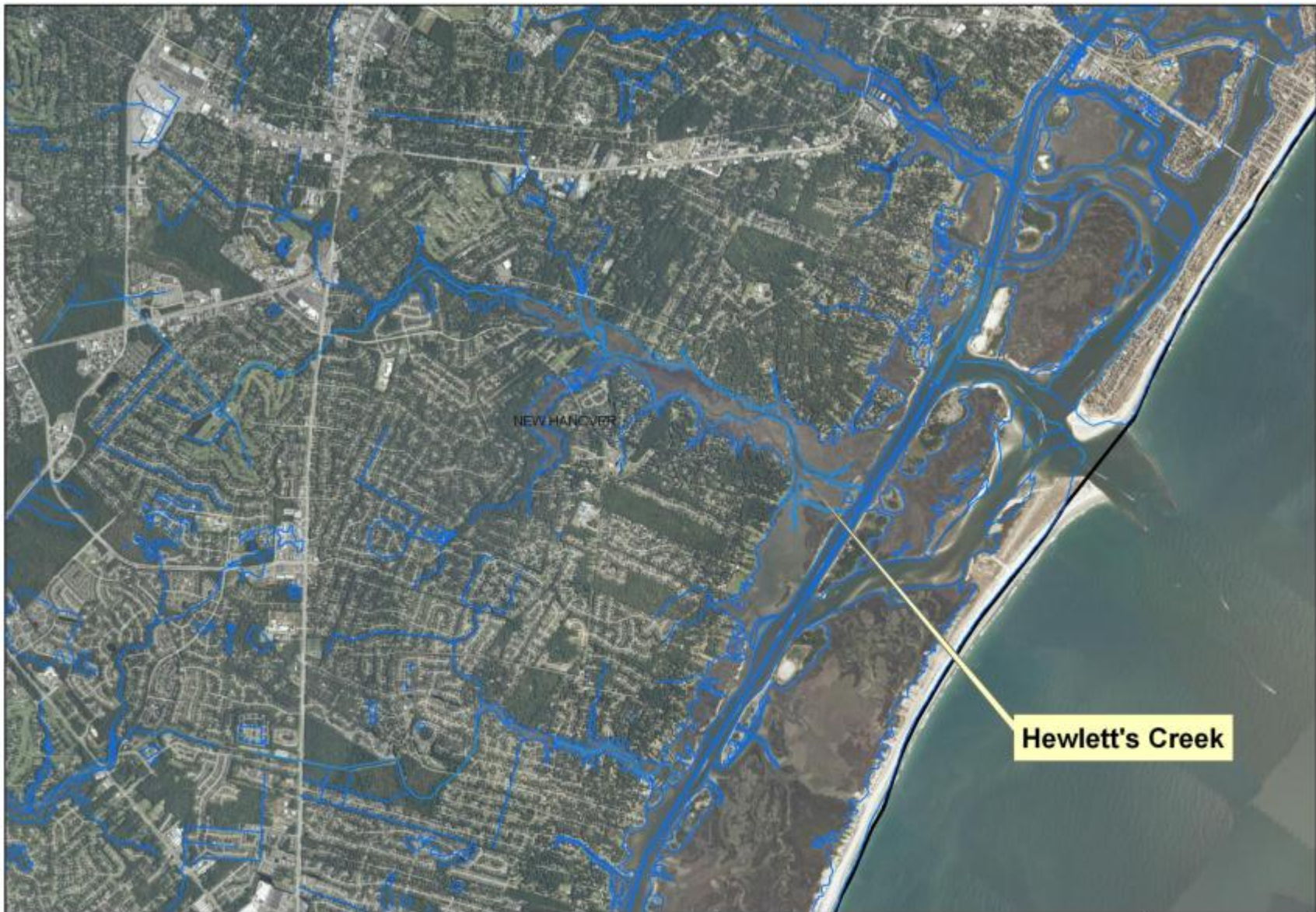
New Hanover District

- Small land mass, highly developed
- In 1999/2000 County Commissioners considered dropping the services of the District
- UNC-Wilmington monitoring of streams
- Hewletts Creek initial focus
- 2004 the New Hanover District passed a resolution to forward CCAP



New Hanover County





NEW HANOVER

Hewlett's Creek



Hewlett's Creek Watershed



www.soilandwater.nc.gov



CCAP Program Develops

- State Division Director on board
- New Hanover sought legislative support
- Carolyn Justice – House member introduced to State Legislature
- Charlie Albertson – Senate
- Support generated from RC&Ds, Coastal Federation, Conservation Council, Marine Fisheries, League of Municipalities, others
- Passed with no dissenting votes in July 2006

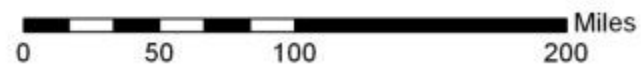
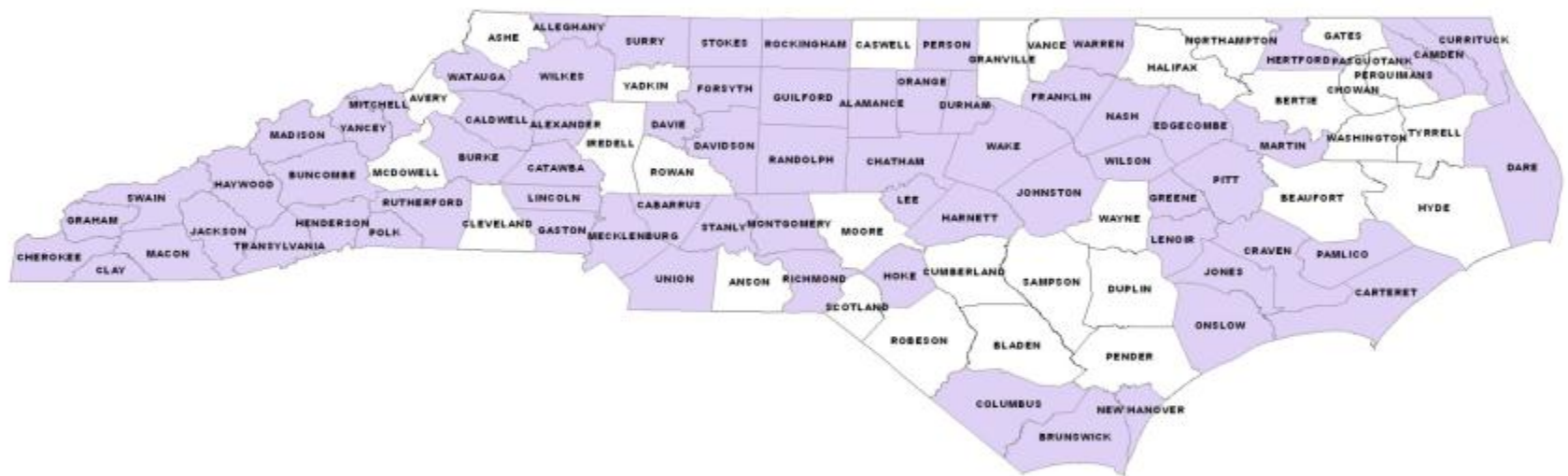
CCAP Organizational Structure

- Modeled after successful Ag Cost Share Program (ACSP)
- CCAP uses the same infrastructure to implement as the ACSP
 - ACSP contracting system
 - ACSP database
 - Engineers/technicians/contracting staff
- Utilized NC State University resources
- Provided/provide training to field staff

Operations

- State appropriation is \$200,000/year
 - Covers one full-time salary for Coordinator
 - Covers ~50% of two additional positions
 - ~\$136,000 allocated to participating districts
 - Last year 74 districts participated
- Leveraged with \$1.6 million in grant resources
- Participants cost share 25%
- Leverage rate of 23% appropriations 77% grants

Community Conservation Assistance Program Districts Receiving an Allocation for FY2012



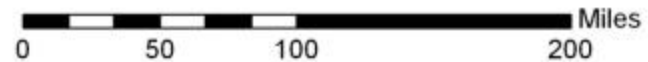
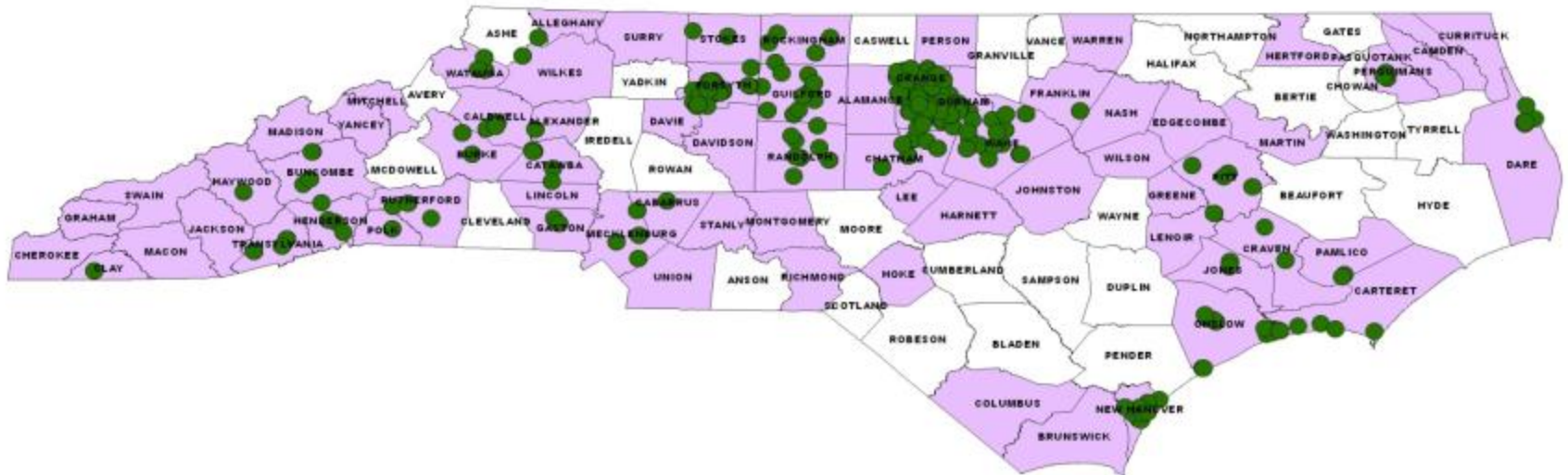
Operations

- Total district requests to date > \$15 million
- 47 districts have Job Approval Authority on 223 practices
- PY2008, 44 districts participated
- 74 districts participating out of 100
- ~1,100 BMPs installed over 5 years
- Annual Report provided to the General Assembly

CCAP Best Management Practices

Abandoned well closure	Backyard raingarden
Backyard wetland	Bioretention area
Cisterns	Critical Area Planting
Diversion	Grassed Swale
Impervious surface conversion	Marsh Sill
Permeable pavement	Pet waste receptacle
Riparian buffer	Stream restoration
Streambank and shoreline stabilization	Stormwater wetland
Structural stormwater conveyance	District BMP

Community Conservation Assistance Program BMPs Implemented through June 2012



Pitfalls

- Limited resources, both implementation funds and personnel resources
 - District allocations ~\$1,800
 - Not enough specialized engineering services
 - Allocations allow for 1 decent project
- A relatively low priority with the Association (understandable)
- Leveraging from other sources becoming more difficult (significant decrease in grantors' funds)

The “Good Stuff”

- Established structure existed, ease of implementation
- Excellent support from other entities
- Excellent resources with the University
- Timing with Phase II and MS4
- Good political network with state legislators
- Coordination with State of NC stormwater staff

Search web for: Community Conservation Assistance Program



The screenshot shows a web browser window displaying the NCD&S website. The browser title is "Soil & Water Conservation Division - Cost Share Programs - Mozilla Firefox (Private Browsing)". The address bar shows "www.ncagr.gov/SWC/costshareprograms/CCAP/index.html". The page content includes a navigation menu, a search bar, and a main content area with the following sections:

- Soil & Water Conservation Home**
- Cost Share Programs**
 - ACSP
 - AgWRAP
 - CCAP
 - CREP
 - Lagoon Conversion Program
- Search Soil and Water**
 - Google Custom Search
 - Search
- Cost Share Programs - Community Conservation Assistance Program (CCAP)**
 -  CCAP is a voluntary, incentive-based program designed to improve water quality through the installation of various best management practices (BMPs) on urban, suburban and rural lands not directly involved with agriculture production.
 - Who is eligible?**

Eligible landowners may include homeowners, businesses, schools, parks and publicly owned lands.
 - Why is this program important?**

How rapid urbanization affects water quality becomes important as North Carolina's land use continues to change. CCAP can help educate landowners on water quality, stormwater management and retrofit practices to treat stormwater runoff.
 - How does CCAP work?**

Interested landowners may apply to their local soil and water conservation district for financial and technical assistance for the installation of BMPs to protect water quality. Applications are ranked based on local water quality priorities and, if eligible, a conservation plan is prepared. Landowners may receive financial assistance of up to 75 percent of the pre-established average cost of the BMP.
 - CCAP Highlights**
 - [Best Management Practices](#)
 - [CCAP Advisory Committee](#)
 - [Forms](#)
 - [Manual](#)
 - [Reports](#)
 - [Online Contracting System](#)
 - [Tools & Resources](#)
- Contact Information:**

NCD&S Division of Soil & Water Conservation, Pat Harris, Director
Mailing Address: 1614 Mail Service Center, Raleigh NC 27699-1614
Physical Address: 512 North Salisbury Street, Raleigh North Carolina 27604
Phone: 919.733.2302; FAX: 919.715.3559

For More Information

Bill Hart - Supervisor with the New Hanover Soil
and Water Conservation District

910-452-9101

Tom Hill – CCAP Coordinator

919-715-6107

