



WATER FINANCE CLEARINGHOUSE

ONE STOP SHOP FOR ALL THINGS
WATER FINANCE

EPA's Water Infrastructure and Resiliency
Finance Center

www.epa.gov/wfc

MEET THE PRESENTER

Kristyn Abhold

Financial Analyst
U.S. EPA, Water Infrastructure
and Resiliency Finance Center

abhold.kristyn@epa.gov
202.566.2730
Washington, D.C.





Water Infrastructure and Resiliency Finance Center

The Water Finance Center is an **information and assistance center**, helping communities make informed decisions for **drinking water, wastewater, and stormwater infrastructure** to protect human health and the environment.



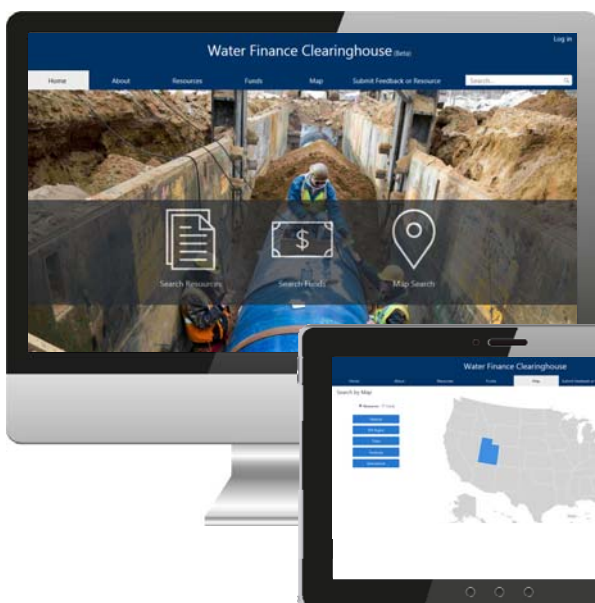
Research

Advise

Innovate

Network

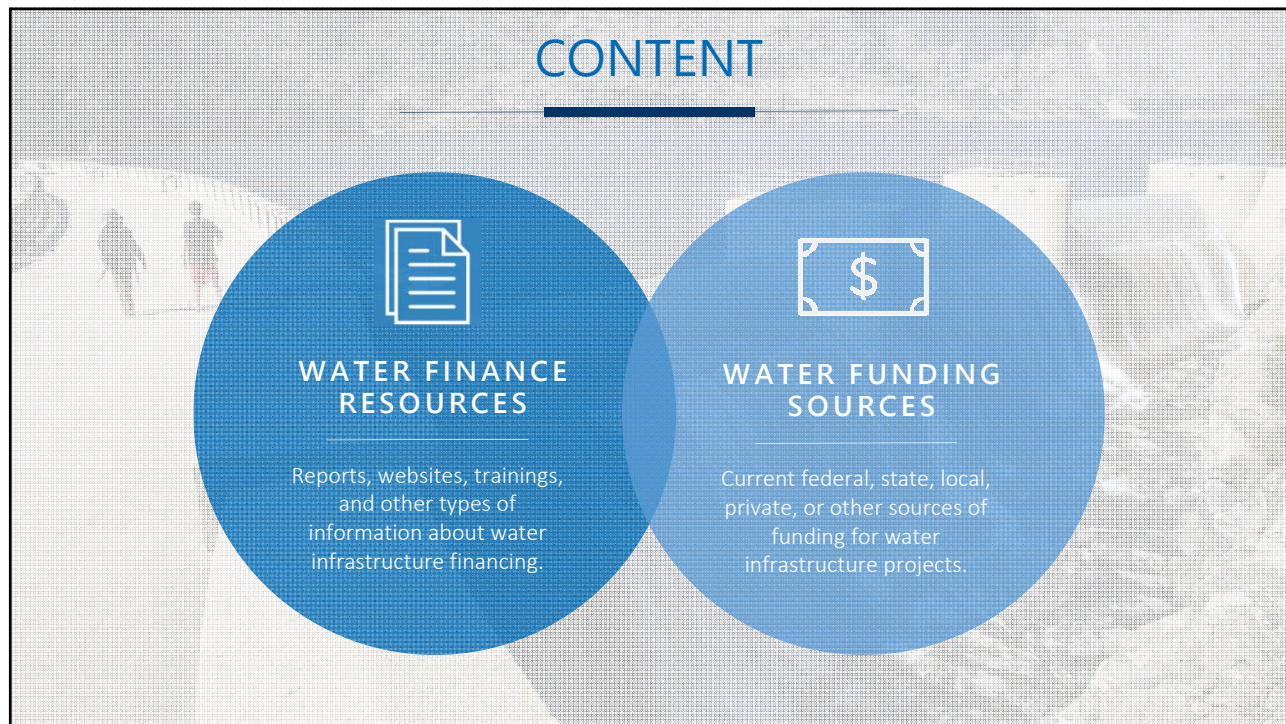
<https://www.epa.gov/waterfinancecenter>



WATER FINANCE CLEARINGHOUSE

Meeting the Needs of Key Stakeholders

The Water Finance Clearinghouse is an **easily navigable web-based portal** that helps communities locate **information** and **resources** that will assist them in making **informed decisions** for their drinking water, wastewater, and stormwater infrastructure needs.



CONTENT

Essential Resources and Information in the Clearinghouse

RESOURCES	FUNDING SOURCES
<ul style="list-style-type: none"> • Reports • Webinars • Case Studies • Videos • Websites • Trainings • Guides 	<ul style="list-style-type: none"> • Federal funding – grants and loan programs that support water infrastructure project development and construction • Regional funding opportunities • State funding – grant and loan programs • Foundation opportunities • NGO
<ul style="list-style-type: none"> • Outreach • Presentations • Events • Feasibility Studies • Resource Lists • Tools • Other 	

QUALITY OVER QUANTITY



- ## FOCUS ON WATER FINANCE

All resources should have a strong emphasis on financing, funding, capacity development etc.
- ## EASY TO LOCATE INFORMATION

Will NOT accept reports or guides that contain only a short section on funding.
- ## FREE OF CHARGE

No resources in the Water Finance Clearinghouse should require users to pay for access.



BETA TESTING


→


1500

Stakeholders

SOLICIT FEEDBACK

Solicit feedback on Clearinghouse content and functionality through meetings, events, webinars etc.

RECRUIT CONTRIBUTORS

Teach funding agencies and key stakeholders (technical assistance providers, NGOs, foundations etc.) how to become Clearinghouse Contributors.

VERIFY CONTENT

Encourage Clearinghouse Contributors to edit and/or verify content is accurate and complete before public launch.

23

Meetings

10

Webinars

3

Events

BETA TESTING FEEDBACK



POSITIVE FEEDBACK

Overwhelming and exclusively positive feedback – meeting the needs of the sector.



FILTER EDITS & ADDITIONS

Suggestions to add or edit filter options – decentralized filters, drinking water, funding scope, etc.



EXPANDED USER FEATURES

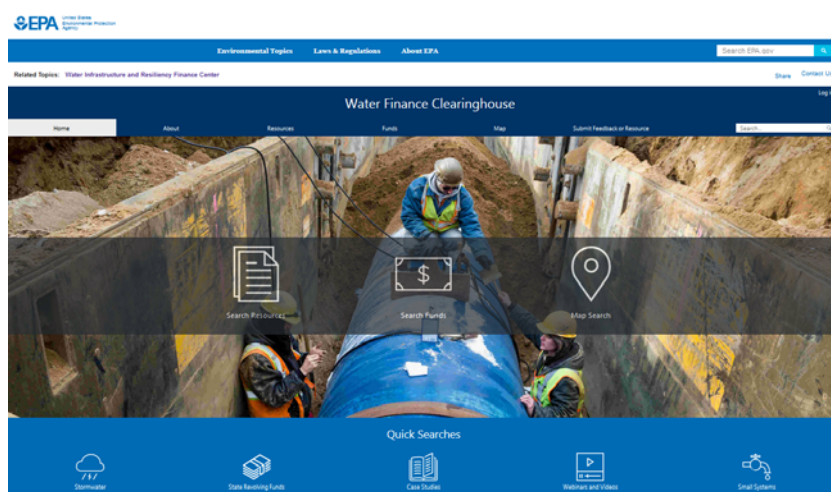
Requests to expand “favoriting” feature to general users & develop notification system for new content.



CONTRIBUTOR FEATURES

Add an option to print draft suggestions prior to submitting for review.

WATER FINANCE CLEARINGHOUSE



- 2 Databases in 1
 - Funds
 - Resources
- Can search multiple ways:
 - Resources Icon/Tab
 - Funds Icon/Tab
 - Map Search
 - Global Search – searches both databases using key word/s
 - Quick Searches (applies filters for user)

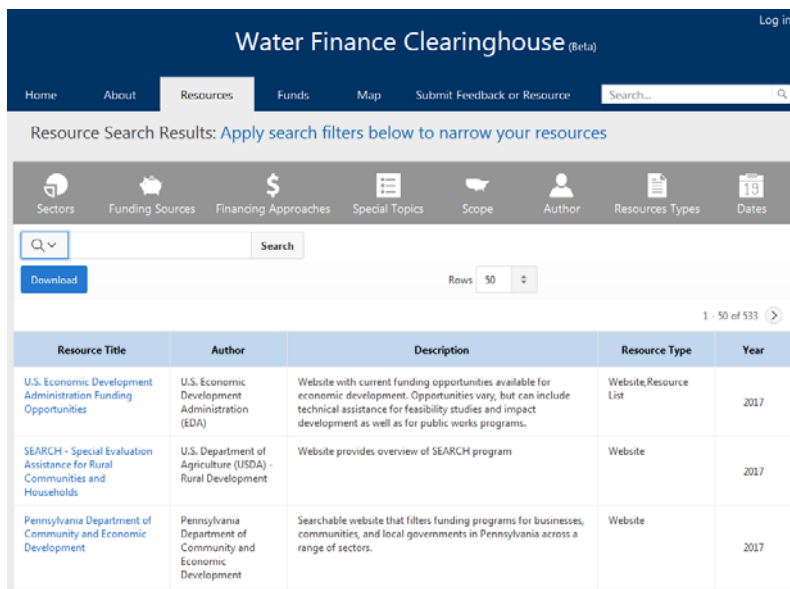
MAP SEARCH



Key Features:

- Users can click on any state – will populate search results for resources tagged for that state.

SEARCH RESOURCES



Key Features:

- Drop-down filters at the top of the search results.
- Information Displayed:
 - Clickable Resource Title
 - Author
 - Brief Description
 - Resource Type
 - Year

RESOURCES: FILTER DROP-DOWN MENU

The screenshot shows the Water Finance Clearinghouse (Beta) website. The top navigation bar includes links for Home, About, Resources, Funds, Map, and Submit Feedback or Resource, along with a search bar. Below the navigation bar, a message states: "Resource Search Results: We've found 173 resources that match your filter". Under the "Filters" section, there are three tabs: "Drinking Water", "Wastewater", and "Remove all Filters". Below these tabs, there are several filter categories: Sectors, Funding Sources, Financing Approaches, Special Topics, Scope, Author, Resources Types, and Dates. A "CLOSE" button is located to the right of the filter categories. Below the filter categories, there are checkboxes for various filter options: Combined Sewer System, Green Infrastructure, Groundwater, Stormwater, Drinking Water (checked), Greywater, ReUse, and Wastewater (checked). An "Apply Filters" button is located to the right of the checkboxes. Below the filter categories, there is a search bar with a magnifying glass icon and a "Search" button. Below the search bar, there is a "Download" button and a "Rows" dropdown menu set to "50". Below the "Rows" dropdown, there is a pagination link "1 - 50 of 173". Below the pagination link, there is a table with the following columns: Resource Title, Author, Description, Resource Type, and Year. The table contains one row of data: "U.S. Economic Development Administration Funding" by "U.S. Economic Development" with a description "Website with current funding opportunities available for economic development. Opportunities may, but not include..." and a resource type "Website, Resource Type".

Users can apply multiple filters by clicking on the gray tabs & selecting filters.

RESOURCES: FILTER DROP-DOWN MENU

This screenshot is identical to the one above, but with an orange arrow pointing to the "Remove all Filters" tab in the "Filters" section. The arrow originates from the text "Can remove individual or all filters by clicking on the 'X'." located to the right of the screenshot.

Users can apply multiple filters by clicking on the gray tabs & selecting filters.

Can remove individual or all filters by clicking on the "X".

SEARCH FUNDS

Water Finance Clearinghouse (beta) Log in

Home About Resources Funds Map Submit Feedback or Resource Search...

Funds Search Results: Apply search filters below to narrow your funding sources

Funding Sources Sectors Eligible Uses Eligible Applicants

Download Rows 50 1 - 50 of 408

Program Name	Source	Description	How To Apply	Current Funding Level	Contact
Drinking Water State Revolving Fund (DWSRF)	Wyoming Department of Environmental Quality	The Drinking Water State Revolving Fund (DWSRF) makes loans to public entities for improvements of drinking water systems, including source, treatment plant, storage tank, and transmission and distribution line projects.	SRF loan application forms are available on the internet at the OSLI SRF website or directly from OSLI. For more detailed instructions, visit the website.		Beth Blackwell elizabeth.blackwell@wyo.gov 307-777-6373 Office of State Lands and Investments Herschler Building, 3W 122 West 25th Street Cheyenne, WY, 82002
Clean Water State	Wyoming Department of	The Clean Water State Revolving Fund	SRF loan application forms are available on the internet at the OSLI SRF website		Beth Blackwell elizabeth.blackwell@wyo.gov

Key Features:

- Drop-down filters at the top of the search results.
- Information Displayed:
 - Clickable Funding Option
 - Source
 - Description
 - How to Apply
 - Current Funding Level
 - Contact Information

KEY CLEARINGHOUSE FEATURES

Water Finance Clearinghouse (beta) Log in

Home About Resources Funds Map Submit Feedback or Resource Search...

Funds Search Results: We've found 6 funding sources that match your filter

Filters Ohio Capital Projects Remove all Filters

Export Your Results

Opening funds_report.csv

You have chosen to open:

funds_report.csv
which is: Microsoft Excel Comma Separated Values File (2.9 KB)
from: https://ofmpub.epa.gov

What should Firefox do with this file?

☒ Open with Microsoft Excel (default)

☐ Save File

☐ Do this automatically for files like this from now on.

OK Cancel

Key Features:

- Export search results at any time to an excel file – includes hyperlink.
- Search within search results.
- Reorganize search results by clicking on column header.
- Remove columns of information for customizable display.

GENERAL USER ACCOUNT

Create a “General User” Account:

- Click on “Create Account” and select “General”
- Type in your email address and click “Submit”
- General Users can:
 - Favorite resources and funding sources for quick access at any time
 - Subscribe to receive email updates for new additions/edits to specific filters options.

GENERAL USER - MY ITEMS

Resource Title	Author	Description
Utilizing SRF Funding for Green Infrastructure Projects	EPA Environmental Financial Advisory Board	The report considers the historic agreement between EPA and the City of Philadelphia to meet clean water goals with state-of-the-art green infrastructure project solutions and the limited involvement of the Clean Water State Revolving Funds (the "CWSRFs"). The purpose of the report is to analyze the potential of the CWSRFs to provide credit guarantees to green infrastructure projects within current program eligibilities and resources.
SRF Investment Function: Current Status and Prospects for Enhancing SRF Sustainability	EPA Environmental Financial Advisory Board	The purpose of this report is threefold: (1) to assess state SRF administrator's current authority and use of the investment function in managing SRF programs; (2) to identify and assess state-of-the-art investment practices and strategies currently being used and (3) consider the benefits of expanded SRF investment authority of SRF performance.
Developing Dedicated Stormwater Revenue	EPA Environmental Financial Advisory Board (EFAB)	This report examines ways that the Water Infrastructure and Resiliency Finance Center (WIRFC) can help local governments develop dedicated stormwater revenue mechanisms. The Board recommends that that WIRFC help local governments determine costs, evaluate revenue options, examine equity and affordability concerns, create a frame-work for collecting and segregating revenues, use technology in determining costs, and communicating effectively with stakeholders.

When logged-in as a General User, in the “My Items” tab you can:

- View
 - Favorite Resources.
 - Favorite Funding Sources.
- You can “favorite” items by clicking on the STAR icon on the left-side of each Clearinghouse entry.
- Un-favorite by deselecting STAR icon

GENERAL USER - MY SUBSCRIPTIONS

Water Finance Clearinghouse (Beta)

Logged in: ABHOLD.KRISTYN@EPA.GOV Log out

Home About Resources Funds Map My Items Submit Feedback or Resource Search...

Resource Favorites Fund Favorites Subscriptions

You are subscribed to receive email notifications for new additions of content to the Water Finance Clearinghouse with any of the following labels.

Resources

California X Conservation Financing X Affordability X

Funds

EPA X California X

Resource Subscription Unsubscribe

Resource Types

☐ Article ☐ Guide ☐ Regulation ☐ Training

☐ Case Study ☐ Other Resource Type ☐ Report ☐ Video

☐ Event ☐ Outreach ☐ Resource List ☐ Webinars & Videos

☐ Feasibility Study ☐ Presentation ☐ Tool ☐ Website

Scope

☐ National ☐ Tribes & Alaskan Native Villages ☐ International

Community Population Size

☐ Small (less than 10,000) ☐ Medium (10,000 - 99,999) ☐ Large (100,000 and above)

Funding Subscription Unsubscribe

Sectors

☐ Agriculture ☐ Green Infrastructure ☐ Reuse

☐ Animal Agriculture ☐ Greywater ☐ Septic/Decentralized

☐ Combined Sewer Systems ☐ Groundwater ☐ Stormwater

☐ Drinking Water Systems ☐ Private Drinking Water Wells ☐ Wastewater Utilities

Eligible Uses

☐ Capital Projects ☐ Green Projects

☐ Conservation ☐ Home Repairs & Upgrades

☐ Contaminated Site Remediation ☐ Operations & Maintenance

☐ Planning & Predevelopment

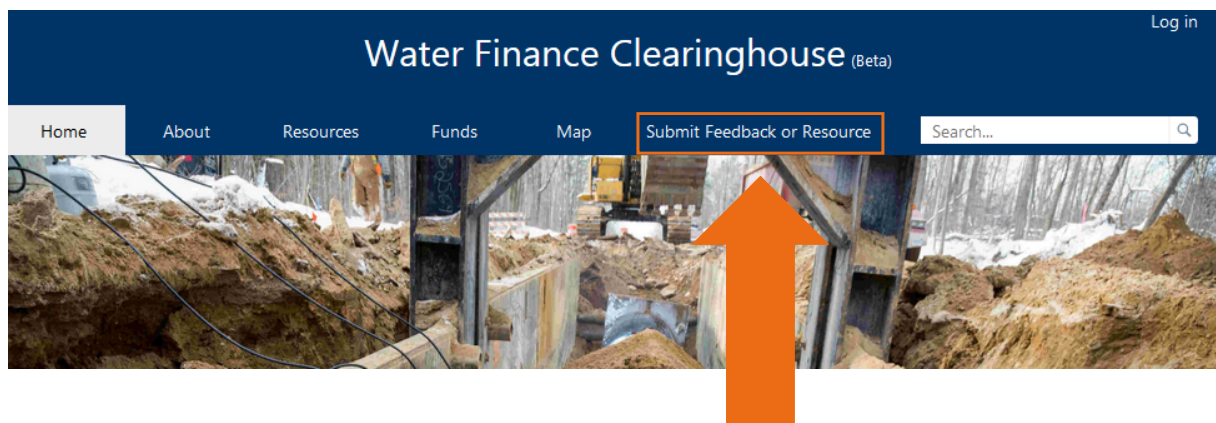
☐ Resiliency & Hazard Mitigation

Under “My Subscriptions” in the “My Items” tab, General Users can:

- Track and manage email subscriptions.
- You can select filter options for email notifications.
- You can set email frequency.

GENERAL USER FEEDBACK

- Users can provide general feedback – report a broken link, desired content, etc.
- Users can suggest new resources and funding sources be added to the Clearinghouse.



MAINTENANCE

2-Pronged Approach

EPA Staff
Annually/Bi-annually

Clearinghouse
Contributors

Desired Contributors:
Individuals who represent entities that routinely publish or produce water finance-specific resources and/or those that manage water funding sources.



Suggest edits to existing content in the Clearinghouse.



Suggest additions of new resources and/or funding sources.



Suggest removal of resources and/or funding sources.

LOOKING FORWARD

The Water Finance Clearinghouse will be maintained and content expanded over time.

LEARNING MODULES

The Water Finance Center is developing step-by-step guides on specific water finance topics: Water loss financing, disaster recovery & resiliency financing, State Revolving Funds 101, financing decentralized systems, etc.

WATER FINANCE DATA

Incorporate data and analytics of water infrastructure investments made in the United States – through SRFs, other federal programs, and the market (muni bonds). May include water infrastructure needs data.

CLEARINGHOUSE 2.0

Soliciting recommendations and ideas for how to make the Clearinghouse even better for key stakeholders. What would you like to see?

CONTACT



Visit the Site

www.epa.gov/wfc



EPA Clearinghouse Contact

Kristyn Abhold
Abhold.Kristyn@epa.gov



Phone

202.566.2730