

# COMMUNITY WILDFIRE PROTECTION PLANS

WORKING WITH LOCAL PARTNERS AND  
LANDOWNERS



FREMONT CONSERVATION DISTRICT  
CANON CITY, COLORADO

# What is a Community Wildfire Protection Plan (CWPP)

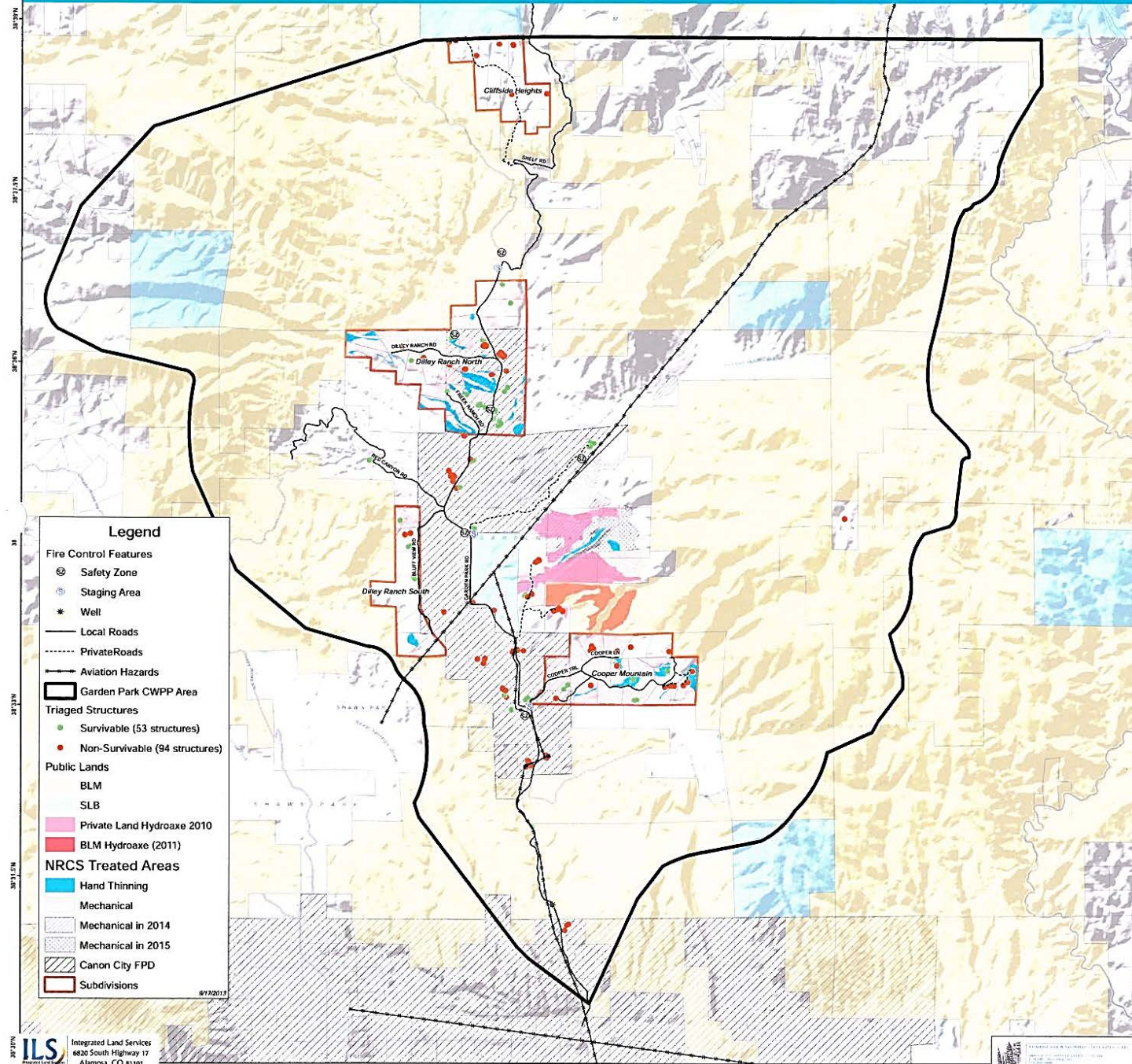
- ❖ Planned for a specific area
- ❖ As large or as small as wanted or needed
- ❖ Written by a Subject Matter Expert, and approved by the State Forest Service
- ❖ Identifies structures and values located throughout the specific area
- ❖ Identifies and prioritizes mitigation activities

## TABLE of CONTENTS

SIGNATORY PAGE	2
RECORD OF CHANGES:	3
TABLE OF CONTENTS	4
PREFACE:	7
I. COMMUNITY IDENTIFICATION & DESCRIPTION	8
Table 1: Southwest Cañon Land Ownership & Structures	9
Figure 1: Southwest Cañon Vicinity Map	10
<b>Colorado Wildfire Risk Assessment (WRA) Summary Report</b>	<b>11</b>
Wildland Urban Interface Risk Index:	11
Wildfire Risk	12
Wildfire Threat	13
Fire Occurrence	14
Wildfire Rate of Spread	15
Flame Length	16
Fire Intensity Scale	17
Fire Type	18
Surface Fuels	19
Table 2: SW Cañon CWPP Fuel Models	19
Fuel Model Map	21
Vegetation	22
Table 3: SW Cañon CWPP Vegetation	22
<b>Fuel Hazards</b>	<b>24</b>
Table 4: Southwest Cañon Fire Behavior Prediction	25
Chart 1: Cañon City Wind Rose Chart for June (Daytime)	25
Chart 2: Fire Behavior Increase as Slope Gets Steeper (0-45% slope)	26
Table 5: SWC CWPP Area Slope Distribution	26
<b>Risk of Ignition and Wildfire Occurrence</b>	<b>27</b>
<b>Community Values at Risk &amp; Hazard Assessment</b>	<b>28</b>
Values:	28
Access:	28
Risk:	29
Triage:	29

Table 6: Structure Triage by Subdivision.	30
Evacuation:	30
<b>Local Preparedness and Protection Capability</b>	<b>31</b>
Table 7: SWC CWPP Available Wildland Fire Suppression Resources	32
<b>Water Supply:</b>	<b>33</b>
Table 8: SWC Area Fire Hydrant Flow Rates	33
III. COMMUNITY MITIGATION PLAN	34
<b>Survivable Space:</b>	<b>34</b>
Home Ignition Zone	36
Chart 3: Slope Impact on Survivable Space	37
<b>State Tax Incentives for Wildfire Hazard Mitigation:</b>	<b>38</b>
<b>Education and Information:</b>	<b>38</b>
<b>Fuel Hazard Reduction:</b>	<b>38</b>
Table 9: Southwest Cañon Potential Shaded Fuelbreaks	40
<b>Fuelbreak Maintenance:</b>	<b>41</b>
<b>Treatment Costs:</b>	<b>41</b>
<b>Wildfire Suppression Infrastructure:</b>	<b>42</b>
Water Supply:	42
Turnarounds:	42
Fire Control Features/Triage Maps:	42
<b>Evacuation Planning:</b>	<b>43</b>
Evacuation Option:	43
<b>Strategic Recommendations:</b>	<b>43</b>
<b>Fire Protection Situation:</b>	<b>44</b>
IV. IMPLEMENTATION & MONITORING	44
<b>Implementation:</b>	<b>45</b>
Table 10: Implementation Items Priority & Cost	45
<b>Monitoring:</b>	<b>46</b>
Table 11: Action Plan for Completing the Southwest Cañon CWPP	47

# Garden Park Existing and Future Fuel Treatments



- Legend**
- Fire Control Features**
    - Safety Zone
    - Staging Area
    - Well
    - Local Roads
    - Private Roads
    - Aviation Hazards
  - Garden Park CWPP Area**
  - Triaged Structures**
    - Survivable (53 structures)
    - Non-Survivable (94 structures)
  - Public Lands**
    - BLM
    - SLB
  - Private Land Hydroaxe 2010**
  - BLM Hydroaxe (2011)**
  - NRCS Treated Areas**
    - Hand Thinning
    - Mechanical
    - Mechanical in 2014
    - Mechanical in 2015
    - Canon City FPD
    - Subdivisions



# How CWPPs are started

- ❖ Interested homeowners in the Community
- ❖ Home Owners Associations
- ❖ Property Owners Associations
- ❖ Fire Protection Districts



# Ips beetle and damage to trees





# Partners and Agencies involved in CWPPs

- ❖ County Office of Emergency Management
- ❖ Local Fire Departments
- ❖ County Sheriff's Office
- ❖ Local City Governments
- ❖ Conservation District
- ❖ State Forest Service
- ❖ Bureau of Land Management
- ❖ U.S. Forest Service
- ❖ Natural Resources Conservation Service

## IV. IMPLEMENTATION & MONITORING

### *Implementation:*

**Table 10: Implementation Items Priority & Cost** lists all the mitigation actions/projects identified in this CWPP. There are also an estimated three hundred forty three (343) structures that need to have their survivable space improved.

**Table 11: Action Plan for Completing the Southwest Cañon CWPP**, identifies the responsibilities and tasks necessary to accomplish the job at hand. The priorities and responsibilities have been negotiated and agreed to by the Core Team and the various named individuals.

**Table 10: Implementation Items Priority & Cost**

Mitigation Action	Priority	Estimated Cost (\$s)
Conduct FireWise and Survivable Space Workshops and provide onsite advice	1	5,000 annually
Survivable Space Around All Structures (\$5,000/lot)	2	5,000/ lot
Encourage residents to stay current in the E911 system (Public Service Announcements)	3	
Mitigate wildfire hazard around wood poles on lines that service pump stations. \$300/pole	4	
Negotiate an agreement for an evacuation route south of Eagle Heights.	5	1,000
Negotiate agreements to thin shaded fuelbreaks A-B & B-C	6	2,000
Landscape Scale Fuels Treatments:	7	84,200
Print & distribute Fire Control Features Maps (20 sets) @\$342/set	8	6,840
Purchase additional fire apparatus for Cañon City FPD and hire additional firefighters	9	1,500,000
Develop a unified fire prevention program for Temple Canyon Recreation Area and lower Grape Creek that deals with transient camp problem during periods of high fire danger	10	1,500
Conduct engineering analysis on how many hydrants can be used simultaneously	11	30,000
Develop a chipping program to deal with wildfire hazard mitigation slash.	12	2,000 annually
Evacuation Simulation	13	3,000
Negotiate and document rights to use Safety Zones	14	1,000
Fuel Break Maintenance		20,000/annum





# Writing the plan and meeting with the homeowners

- ❖ Determine the concerns in the area
- ❖ Prioritize mitigation activities
- ❖ Draft written and checked for accuracy
- ❖ “Interested Parties” meeting with homeowners
- ❖ Final plan written, approved and signed

# Applying for grant funding

- ❖ Funding for writing the plan
- ❖ Funding for project implementation
- ❖ Matching funds from the homeowners

# Planning for mitigation projects

- ❖ Core Team meeting
- ❖ Choosing the priority to make into a project
- ❖ Funding
- ❖ State tax incentives for mitigation

# Community Wildfire Protection Plans in Fremont County, Colorado

- ❖ Fremont County – serves all of Fremont County
- ❖ Four Mile – Carrant Creek – serves parts of Fremont, Park and Teller Counties
- ❖ Garden Park – serves Garden Park area north of Canon City
- ❖ Southwest Canon – serves Southwest Canon City area
- ❖ Dakota Hideout – serves east of Canon City area
- ❖ Upper Beaver Creek – serves western Penrose area
- ❖ Indian Springs (upcoming) – will serve western Fremont County area
- ❖ Chandler Heights (upcoming) – will serve Williamsburg area, west of Florence



# Projects completed in Fremont County CWPPs

- ❖ Southwest Canon CWPP Chipping Program
- ❖ Garden Park CWPP Mitigation Project
- ❖ Southwest Canon CWPP Shaded Fuelbreak Project (upcoming)



# Southwest Canon CWPP Chipping Program (2015)



Chipping crew



Piles for chipping



# Garden Park CWPP Mitigation Project (2016)



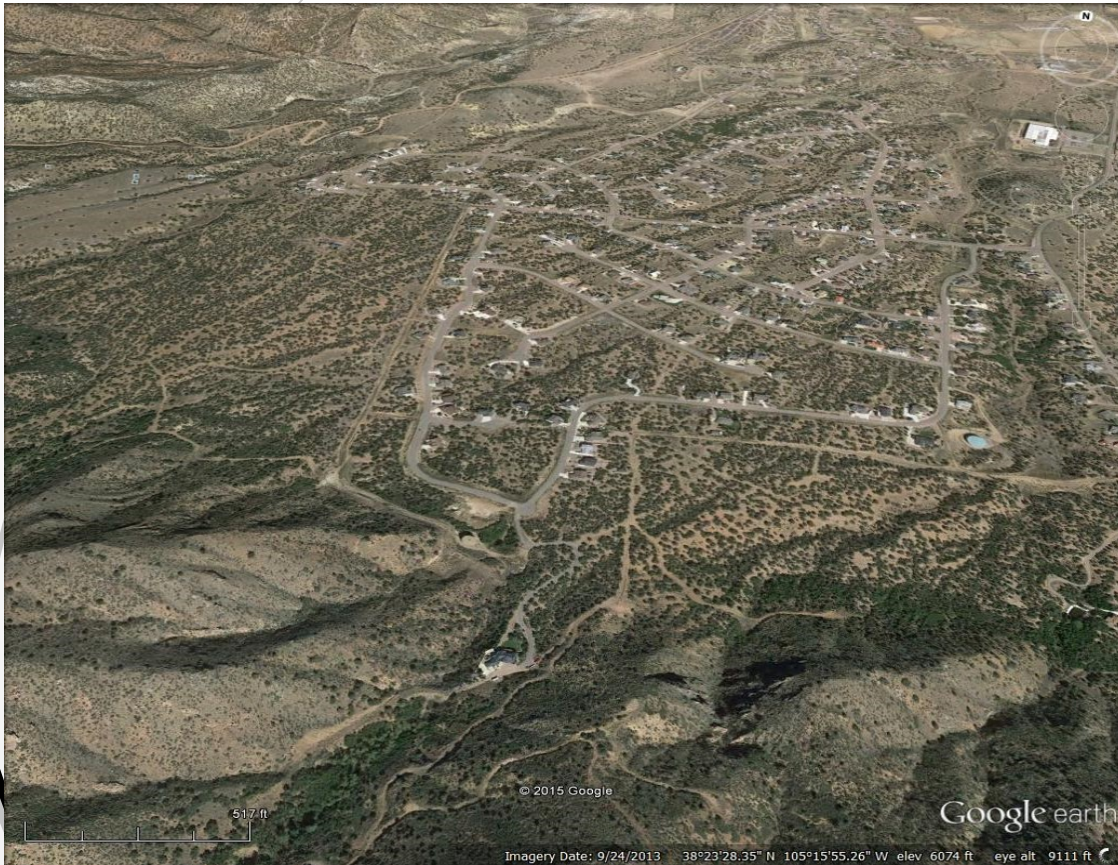
Area with crew at work



Lop and scatter, and, piles for burning



# Southwest Canon CWPP Shaded Fuelbreak Project (2017)



Area to be mitigated



BLM Shaded Fuelbreak completed

# Questions??

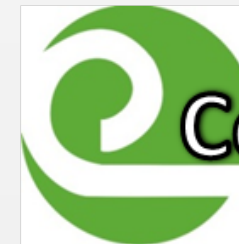
# THANK YOU!!!

Fremont Conservation District, Natural Resources  
Conservation Service and Bureau of Land  
Management in Canon City, Colorado



United States Department of Agriculture

**Natural Resources Conservation Service**



**Fremont  
Conservation  
District**