

m v k c q a z g t f
d b v p e i b b u v
r o t a n i l l o p
r a p o h b y g g m
b d j f f a u w o l
l g r j e z w r r j
k l j k c c p m c x
b r a u o w i i z w
t z k r h r q g d o
v j d z n q h t w d

Search for the word with the following meaning: An animal that moves pollen from the male part of a flower to the female part of a flower.



d i a o z e b b q v
j q m m s q k c s q
w o g y c x c m j v
r w i a q e c k n o
x r t a j b s q o h
t p s o z u d i r t
l e g g t f s l o o
f g l q h n o o b a
z x f y y w x j k k
v m x t s g n g d I

Search for the word to fill in the blank: As a pollinator moves from flower to flower, some of the pollen on its body falls onto a flower's _____ and fertilization occurs.

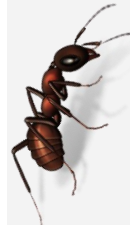


POLLINATOR SEARCH

Search out each word and write the answer on the blank below each puzzle.

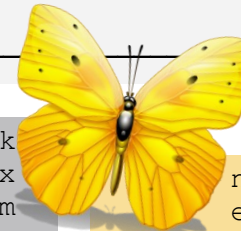
z z n d w o n g j r
l y j p c v c k w j
h u c s k e e a f w
u o v o p g p n g i
g e a e e l u p j o
n n t q x l f i p c
w a m x c s b i r m
l g n e h i z z p n
h j k g p f y p z c
g x q r h w v d e r

Search for the word to fill in the blank: Pollinators choose where to eat based on the color, scent and/or _____ shape of a flower.



c p s p m a a h z b
i b r b b w o u g o
w v i y d k a a w h
g u d y y w x d h p
v j p o l l e n u l
g e l q n a a u o x
w d k b o u l x g k
r d z y b k j s k t
j t j u o k t t n e
y c i s r z p g d m

Search for the word with the following meaning: Located on the flowers' anthers, it contains protein that pollinators need to grow.



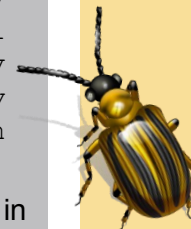
w j x l z b d h k k
m k w o o r p e l x
l z e r m e c w n m
z u g i v j g b n v
q u x g r b h t q f
v e o g p l t w i v
y e i c z e z l m i
q r y o r j a a k v
t h s y n a a z w y
r t c q m v o s i n

Search for the word to fill in the blank: One out of every _____ bites of food we eat depends upon pollinators.



r l o o n b q u n s
f i r h v n f t e p
b j j r g r x u c t
w o p l u y e u t t
p a f u o y c n a k
m p b e m y c w r y
b p e a f g e k b p
p z z d g m n v n r
d v l r g h q n p t
w a p n q u e h b q

Search for the word to fill in the blank: The _____ produced by flowers is packed with sugars, B-vitamins, amino acids, and lipids.



n c z a r d q x p x
e f g u j j q s z q
a p m i w r t x j w
h f c z i n e g t s
h j j l a y i x r u
g y j l k m g v e y
t t p k u y h s d f
s u e v z a n s s z
u y i m i c q n n b
m x v d r n o d e v

Search for the word to fill in the blank: We depend upon pollinated _____ for air to breathe, homes to live in, clothes to wear and many of the medicines we use.

Dining Out The Pollinator Buffet



Not all flowers can provide pollinators with the food and nutrition they need. Also, not all pollinators are able to eat at all flowers due to their different body parts. So, pollinators are picky eaters! One thing most pollinators do have in common is their nutritional needs. They meet these needs by eating the sticky pollen or drinking the nectar found in flowers. For example, nectar is packed with sugars, B-vitamins, amino acids, and lipids. Solve the puzzle to discover one of the nutritional needs they have in common with you. They meet this need by eating pollen; you meet the need by eating healthy food. Use the clues to fill in the letters and find the answer.



Letter #6 can be found in the words B-vitamin, amino acid, and lipid.



The 3rd letter is found twice in three of the words in the following sentence: Pollinators choose certain colors of flower petals as well as certain flower scents when deciding where to eat.

						
--	---	--	--	--	--	---

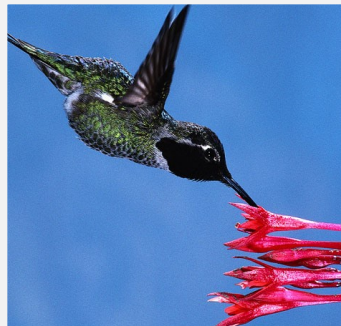


The last letter completes the word that meets a nutritional need both YOU and POLLINATORS need in your diet in order to grow. It is the 14th letter in the alphabet.



Letter #1 is in the word picky but not in the word sticky.

The 5th letter is also the first letter in what pollinators use sugar for.
Hint: Pollinators convert the sugars found in nectar into energy.



Letter #4 is one of the letters found in "nectar" but not in "pollen".



The 2nd letter is found five times in the following sentence: The shape of a flower petal is important because it serves as a landing pad for the pollinator.