



# North Cove Washington “Wash-A-Way Beach” No More!



© Erika Langley



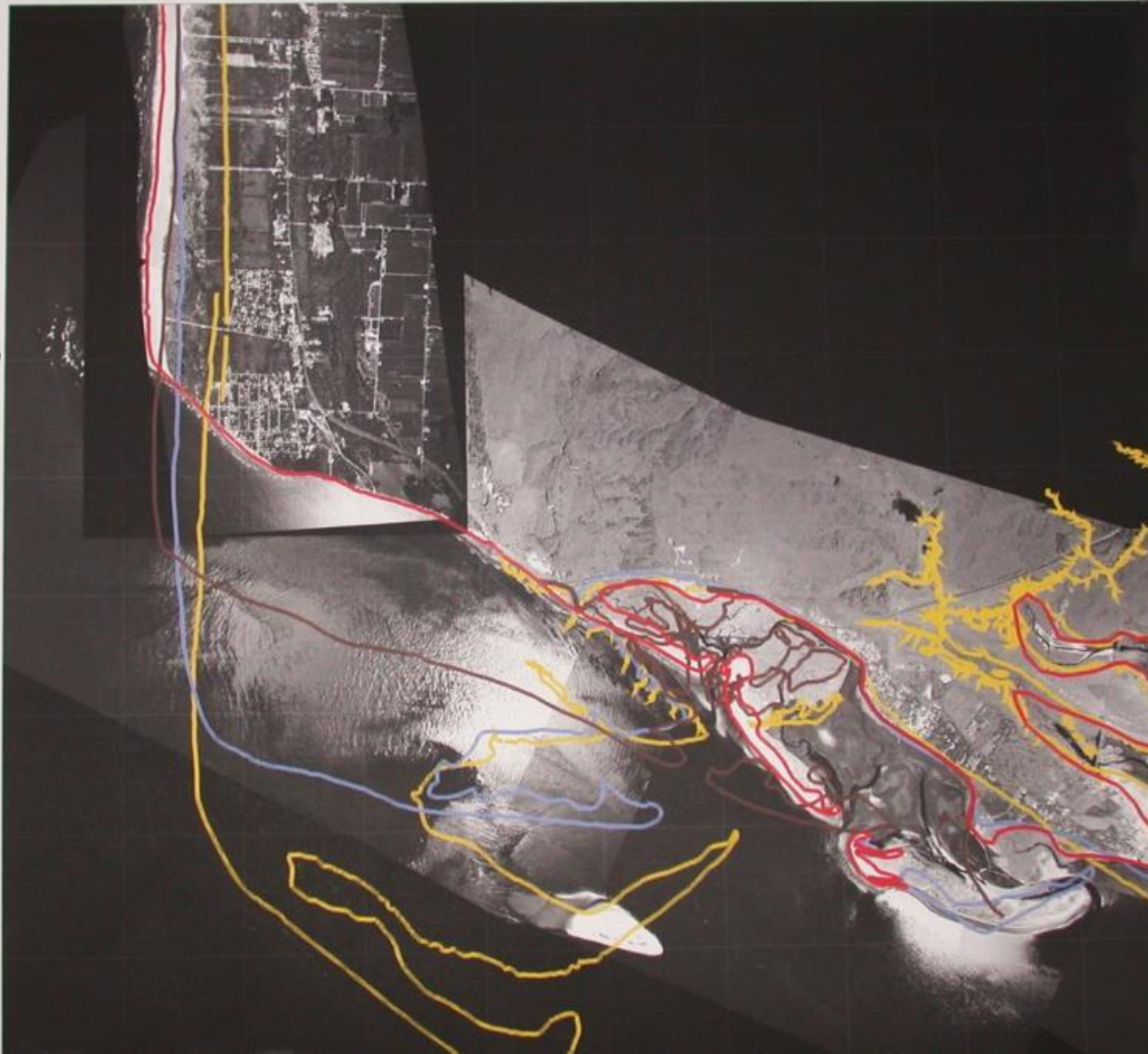
# 1995 Aerial Photomosaic - North Cove, WA



For more information contact:  
Brian Voigt, Department of  
Ecology, CMAP, PO Box 47600  
Olympia, WA 98504-7600  
tel. 360.407.6568  
email bvoi461@ecy.wa.gov

## Legend

-  1870s shoreline
-  1920s shoreline
-  1950s shoreline
-  1995 shoreline
-  1 km grid

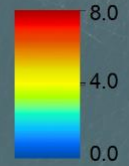




# North Cove Surface Map

Data collected Sept 21, 2017  
Washington State Department of Ecology

Elevation  
(m, NAVD88)



Washington State Plane South, NAD83, m  
Aerial imagery: NAIP 2015

# Video











# Winter 2020

This is the view northwest from the end of Seamobile Drive. We extended our “speedbump” to absorb wave energy in this cove.

13 December 2019:





Prior speedbumps, constructed during this project, have spread rock to optimum the slope of the revetment. And waves brought us lots of wood too.

8 February 2020:





Looking off Old State Route 105 shows a similar treatment in this high energy area.

11 December 2019:





22 February 2020:





## Other Issues for Willapa and Grays Harbor Bays:

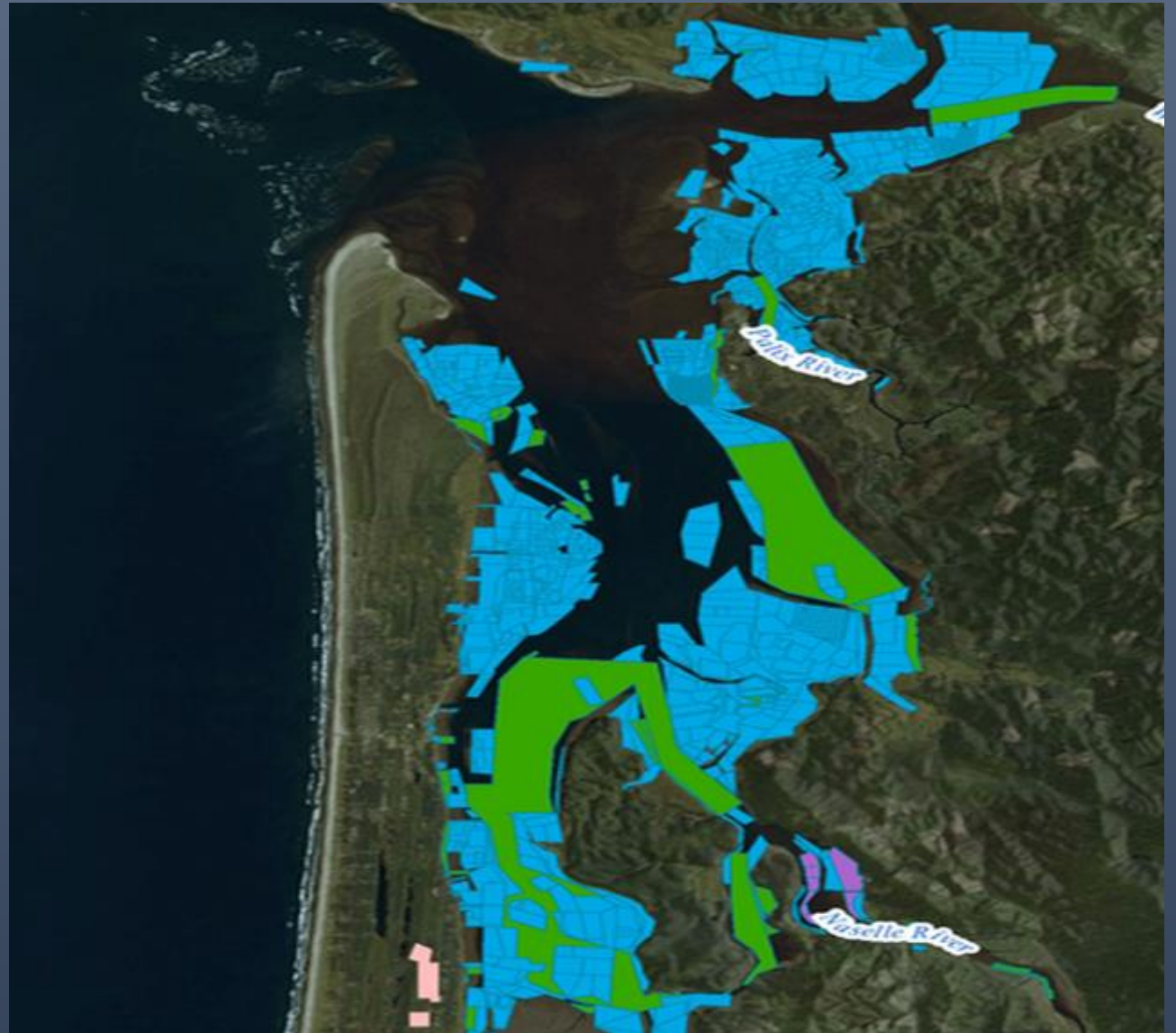
### 1. Invasive Species

- Burrowing Shrimp “Ghost Shrimp”
- Invasive Japonica Eelgrass
- Green Crab

### 2. Sediment transport

- Dredging
- Lack of structure in streams

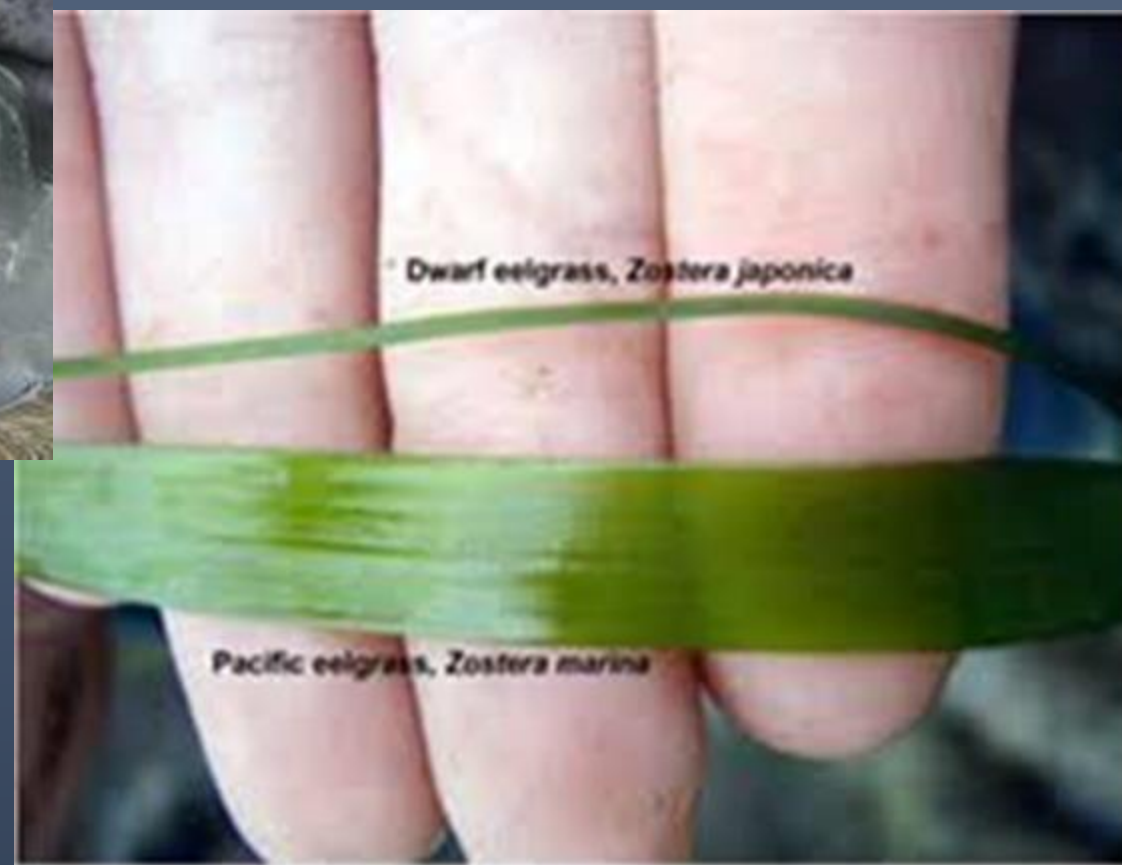
### 3. State and Federal Permitting













- Task 1. Data Preparation
- Task 2. Model Assembly and Review
- Task 3. Update models for Current Bathymetry
- Task 4. CMS Flow/CMS Wave Coupled Run for Baseline Model
- Task 5. PTM Model Run for the Baseline Model
- Task 6. CMS Flow/CMS Wave Coupled Run for Alternatives Models
- Task 7. PTM Model Run for the Alternatives Models
- Task 8. Reporting-BMP's/Implementation toolbox, & Identified Data Gaps
- Task 9. Communication-Stakeholders
- Task 10. Contingencies







Thank You

Questions?