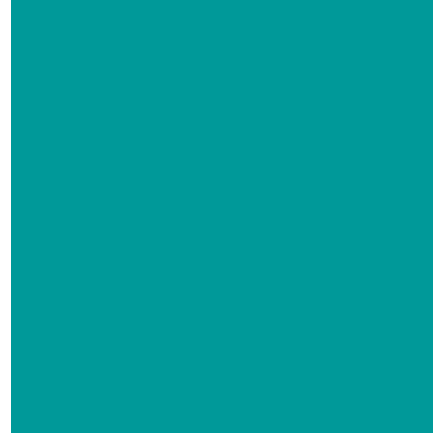


# Headwaters Incubator Program

---

*Cultivating Farms &  
Future Stewards*



**Rowan Steele**

Headwaters Farm Program Manager

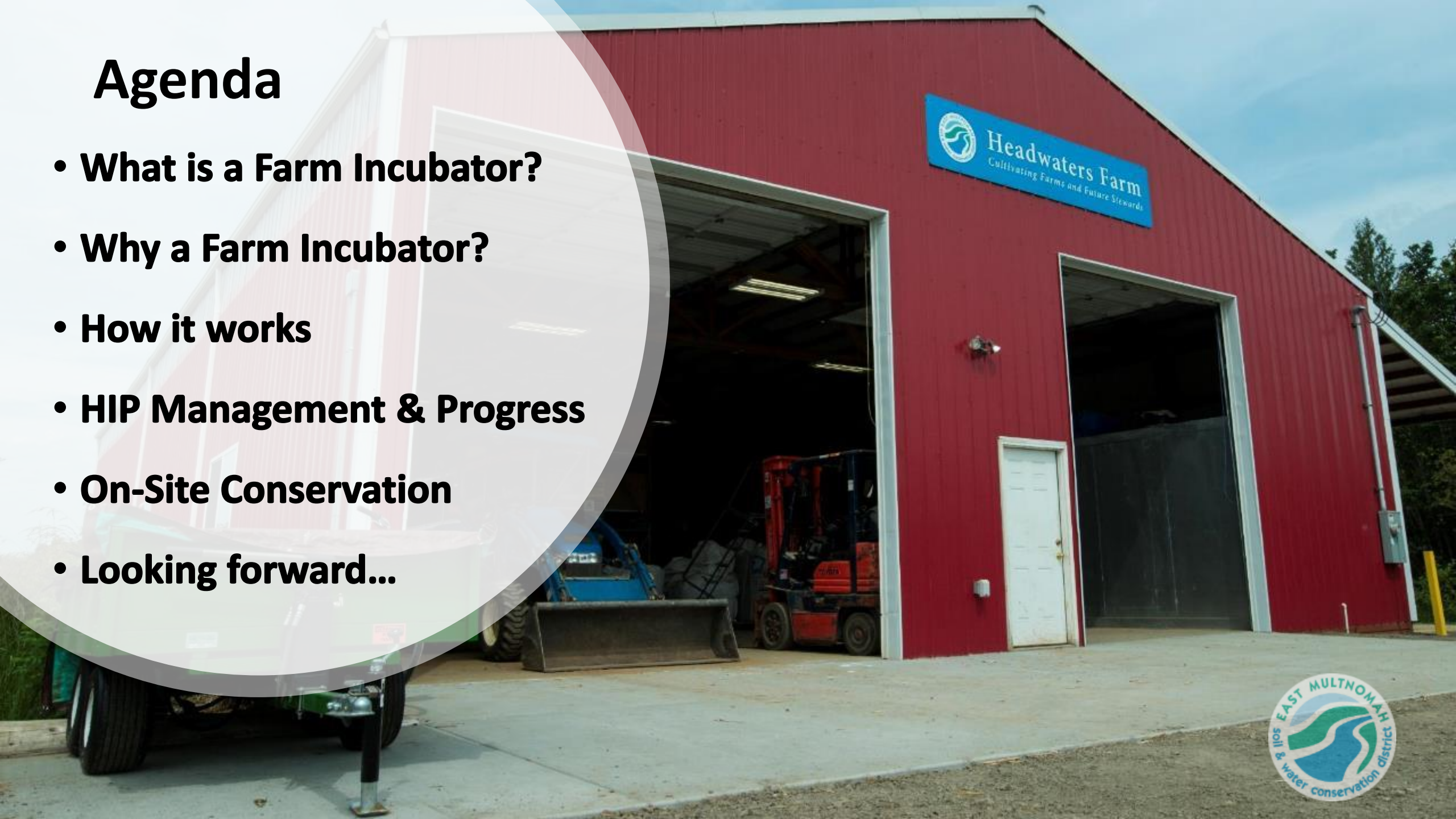
East Multnomah Soil and Water Conservation District

1/12/2021



# Agenda

- **What is a Farm Incubator?**
- **Why a Farm Incubator?**
- **How it works**
- **HIP Management & Progress**
- **On-Site Conservation**
- **Looking forward...**






# East Multnomah SWCD Service Boundaries







***“A land-based, multi-grower project that provides training and technical assistance to aspiring and beginning farmers.”***

**What is a farm incubator?**





# About Farm Incubators



**2016**

- 119 Operational Incubators
- 66 Potential Incubators

Locations approximate. All map information, facts and figures courtesy of the National Incubator Farm Training Initiative.

<http://nesfp.nutrition.tufts.edu/food-systems/national-incubator-farm-training-initiative>



# Why Would a CD Help Beginning Farmers?

---

1. **CDs Help Farmers**
2. **Natural Resource Impact**
3. **Aging Farm Population**





## Why? – *Financial*

- Every dollar on-farm = \$20 within the community (*USDA*)
- Every on-farm job = 3 off-farm (*SBDC*)





# Agricultural Producer Acreage Operated by Race

(2017 USDA Agricultural Census for Multnomah County)

## Why? – *Justice & Community*

- Inequitable land access
- Public health inequities
- Community resiliency / sovereignty



**White: 24,393 acres**

**All others:  
868 acres**





# EMSWCD's Stake...

1. Increase # of New Farmers
2. Keep Farmland in Production
3. Good Stewardship!





# Headwaters Farm





# Headwaters Farm





# Headwaters Farm





# How It Works

---

**1. Capital**

2. Trainings

3. Farm Networks

4. Markets





# How It Works

---

1. Capital

**2. Trainings**

3. Farm Networks

4. Markets





# How It Works

1. Capital
2. Trainings
- 3. Farm Networks**
4. Markets





# How It Works

1. Capital
2. Trainings
3. Farm Networks
4. Markets





# Who We Work With

- Experienced Growers
- 5-Yr Farm Cohort Model
- 2021 = 19 Farms
- 57% Female Farmers
- 37% FOC





# HIP By the Numbers

- 37 Farms / 52 Farmers
- 16 Grad Farms
- 12 Still Farming
- 6 in District / 11 Serving
- 4 Drop-Outs





# Program Management

---

- Farmer Selection
- Setting Expectations
- Staffing
- Budget
- Challenges





# Conservation Investments

- Energy
- Stormwater
- Fish Passage
- Pollinator Habitat
- Soil Health





# Conservation Investments

- Energy
- **Stormwater**
- Fish Passage
- Pollinator Habitat
- Soil Health





# Conservation Investments

- Energy
- Stormwater
- **Fish Passage**
- Pollinator Habitat
- Soil Health





# Conservation Investments

---

- Energy
- Stormwater
- Fish Passage
- **Pollinator Habitat**
- Soil Health





# Conservation Investments

- Energy
- Stormwater
- Fish Passage
- **Pollinator Habitat**
- Soil Health





# Conservation Investments

- Energy
- Stormwater
- Fish Passage
- Pollinator Habitat
- **Soil Health**





# Conservation Investments

---

- Energy
- Stormwater
- Fish Passage
- Pollinator Habitat
- **Soil Health**





# Conservation Investments

---

- Energy
- Stormwater
- Fish Passage
- Pollinator Habitat
- **Soil Health**





# Conservation Investments

---

- Energy
- Stormwater
- Fish Passage
- Pollinator Habitat
- **Soil Health**





# Conservation Investments

---

- Energy
- Stormwater
- Fish Passage
- Pollinator Habitat
- **Soil Health**





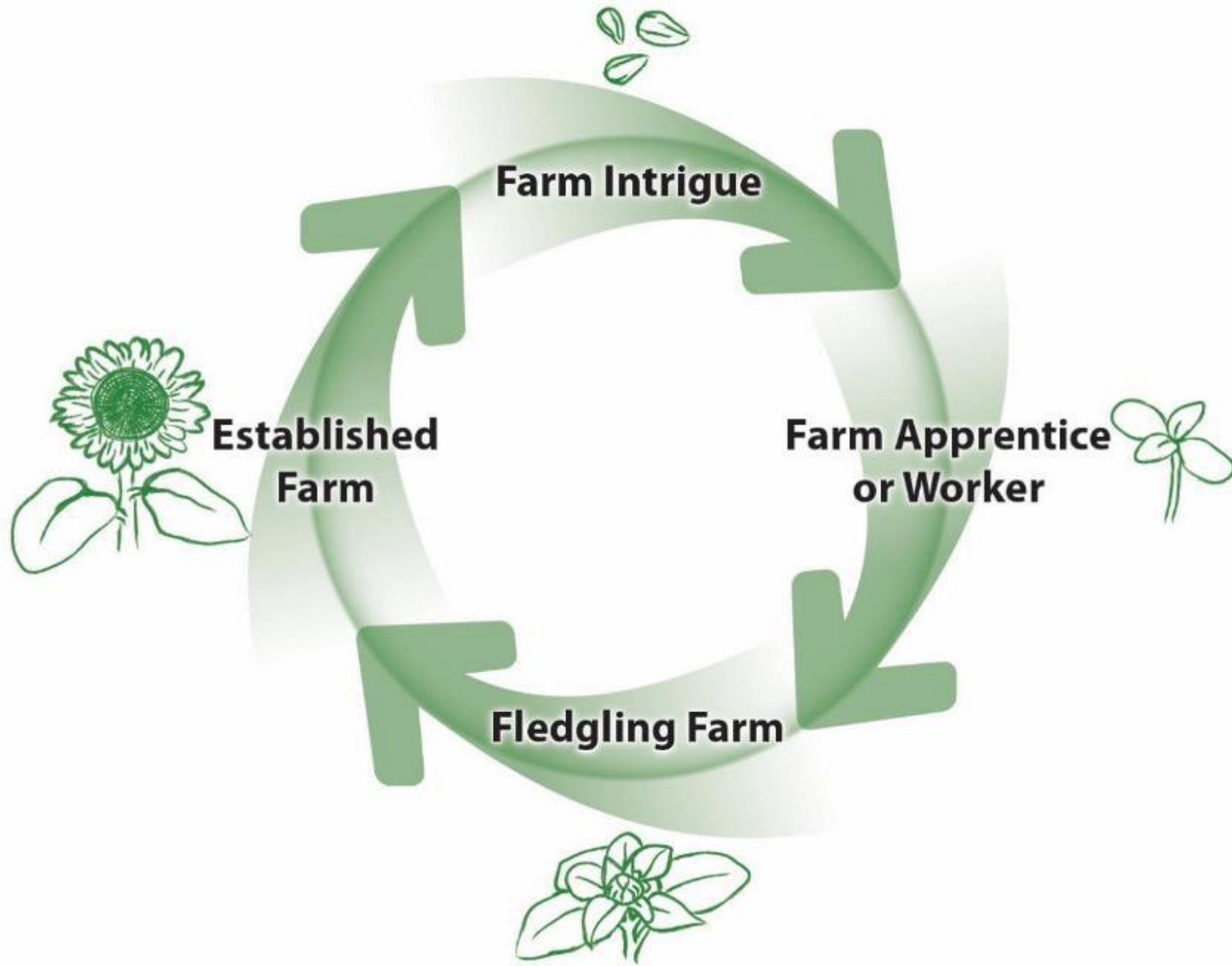
# Conservation Investments

---

- Energy
- Stormwater
- Fish Passage
- Pollinator Habitat
- **Soil Health**









# What's Next...







## Rowan Steele

Headwaters Farm Program Manager

East Multnomah SWCD

[rowan@emswcd.org](mailto:rowan@emswcd.org) / 503.935.5355

*Photo Courtesy of Chelsea Rutherford*

