



Building Resilient Communities: Parks, Pollinators and Other Ways to Strengthen your Communities

www.nrpa.org

NRPA'S THREE PILLARS – OUR GUIDING PRINCIPLES



**ADVANCING COMMUNITY
HEALTH AND WELL-BEING**



EQUITY AT THE CENTER



CLIMATE-READY PARKS

www.nrpa.org

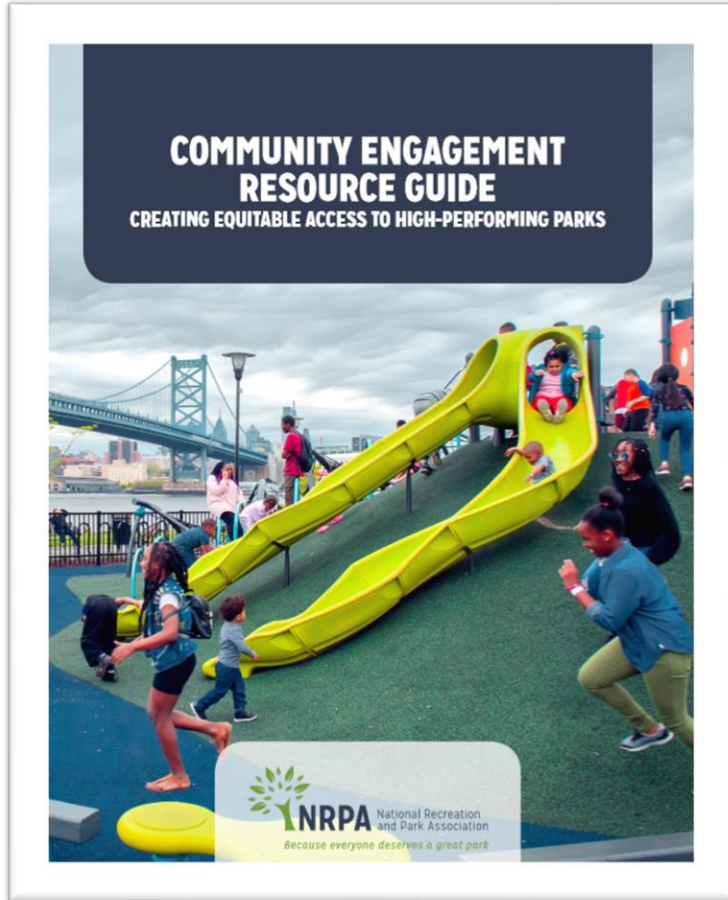
Health & Wellness

NRPA Community Gardening Resources



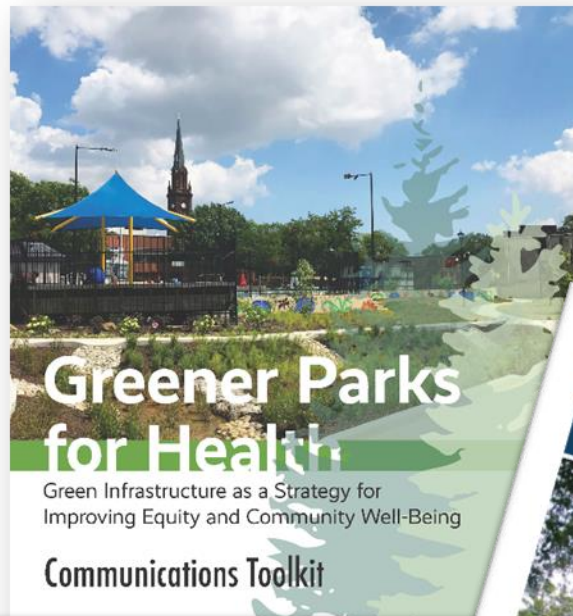
Equity

Equitable Access and Inclusion



www.nrpa.org

Climate Ready Green Infrastructure



Managing Stormwater Naturally!

Parks for Pollinators BIOBLITZ



NRPA National Recreation
and Park Association
Because everyone deserves a great park

The
Scotts Miracle Gro
FOUNDATION

www.nrpa.org



NRPA National Recreation
and Park Association
Because everyone deserves a great park



Benefits



Benefits

Cost Savings

- Maintenance
- Irrigation
- Pesticides/fertilizer



Steps and costs to convert 1 acre of turfgrass to prairie

Activity/Supplies	Cost/ac
1. Site preparation (prior to seeding)	
Herbicide (glyphosate) applied to kill turfgrass	\$50.00
2. Prairie Seed and seeding	
Prairie seed	\$600.00
Develop appropriate seed mix	
Letting seed bids and ordering seed	
Mixing Seed	
Storing Seed	
Drill Seeding	\$150.00
3. Planting maintenance (in year 1)	
Establishment mowing (5 times in 1 st year)	<u>\$300.00</u>
Spot spraying for noxious weeds*	
TOTAL COSTS/ACRE (INITIAL ESTABLISHMENT)	\$1,100.00
4. Planting maintenance (long-term)	
Burn (every 2-3 years)	
Or	
Mow once in early spring (every other year)	\$25.00**
* Most plantings do not need spot spraying	
** Annual cost/acre (based on prorated cost of biennial mowing)	



Tallgrass Prairie
CENTER

UNIVERSITY OF NORTHERN IOWA

www.tallgrassprairiecenter.org

Community at the Center

Question 1: Should communities have designated areas where plants support pollinators, like honey bees and butterflies?

95% of Americans agree communities should have designated areas to support pollinators

**POLLINATOR
HABITAT AREA**



Question 2: Do you know what actions you can take to help the conservation of pollinators?

66% of Americans are NOT very confident in knowing what they can do to help pollinators



Partnerships are Key



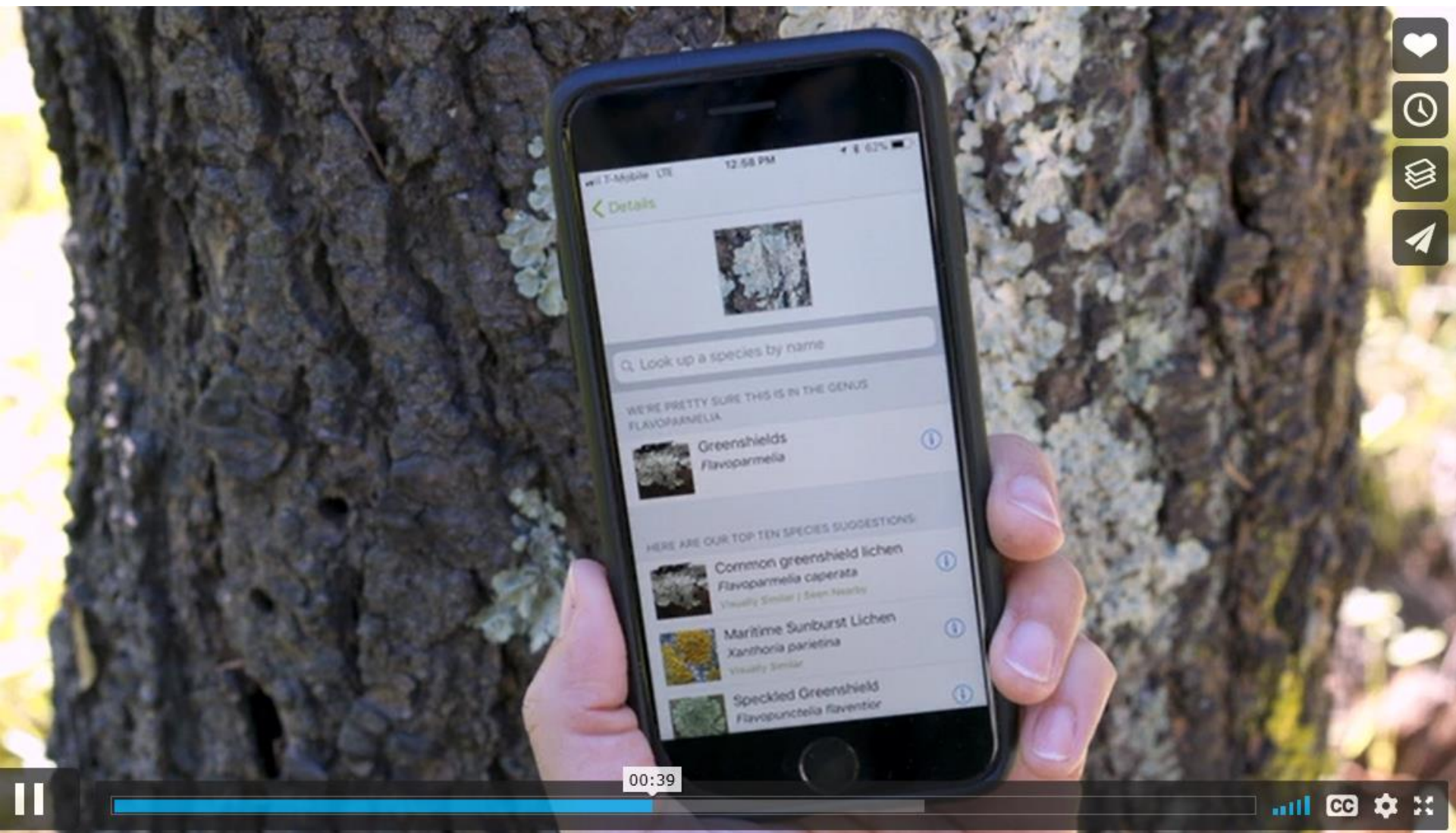


JOIN US FOR THE

Parks for Pollinators BIOBLITZ

Education and Community Engagement





DID YOU KNOW?

"The Dark Paper Wasp is a pollinator."

Parks for Pollinators BIOBLITZ

Parks for Pollinators 2020: Calvert County

SEP 1, 2020 - SEP 30, 2020

INRPA

Building Sustainable and Resilient Communities

Scores Made On

About

Members 7

Join Calvert County Parks & Recreation Natural Resources Division and parks throughout the country in a fun challenge to see how many pollinator species can be documented this September. It is easy to participate by joining an event or making observations on your own using iNaturalist. With iNaturalist, you just take a photo of a pollinator, then identify it, and you're done!

[Read More >](#)

Project Journal

Overview

968
OBSERVATIONS

430
SPECIES

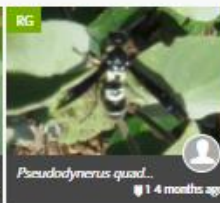
216
IDENTIFIERS

128
OBSERVERS

Stats

Recent Observations

[View All](#)



Most Observations

maryhollinger 228



rosalie-rick 123



mdlamilygal 73



jenniferh3 56



edanko 51



dryad-dancing 20

[View All](#)



Most Species

maryhollinger 109



rosalie-rick 50



mdlamilygal 43



jenniferh3 33



edanko 26



tomfeild 18

[View All](#)



Most Observed Species

Rambur's Forktail 18



Yellow Crownbeard 16



Monarch 15



Common Buckeye 11



Jack-in-the-Pulpit 11



Red-footed Cannibal Fly 11

[View All](#)

Project Requirements

Observations in this project must meet the following criteria:



Taxa
Bats (Order Chiroptera), Plants (Kingdom Plantae), Hummingbirds (Family Trochilidae), Beetles (Order Coleoptera), Ants, Bees, Wasps, and Sawflies (Order Hymenoptera), Flies (Order Diptera), Butterflies and Moths (Order Lepidoptera), Insects (Class Insecta)



Location
Calvert County, US, MD



Users
Any

Stats



Journal

No journal posts yet. Check back soon!

Community Engagement



CELEBRATE
Bug Month
WITH US!

Week 1: Sept 5-11
Bashful Bug Scavenger Hunt

Clues will be given to help you find the hidden bugs in the park. Snap your photo with the bashful bugs to win a pollinator-friendly plant for your garden.
#bugmonth2020

Scavenger Hunt Schedule:
Saturday-Monday - Cobus Creek County Park
Tuesday-Friday - Ox Bow County Park

Clues will be posted each day on our Facebook and Instagram pages. Directions to and maps of each park can be found at www.elkhartcountyparks.org

Week 2: Sept 12-18
Monarch Mania

Kick off the week with a monarch-tagging class on Saturday (registration required), followed by everything monarch on our Facebook and Instagram pages.
#bugmonth2020

Posts will include interactive activities, online resources and ideas of what you can do to give monarchs a helping hand!

- craft ideas
- milkweed info
- coloring pages
- and more!

Week 3: Sept 19-25
Parks for Pollinators Bioblitz

Using the iNaturalist app, join thousands across the nation in seeking out and documenting pollinator-friendly plants and pollinators. At the park or in your backyard, be a part of this important National Recreation and Park Association project.
#parks4pollinators #bugmonth2020

Steps:

1. Download the free iNaturalist app onto your phone.
2. Snap photos of as many different plants or pollinators that you can find, anywhere in Elkhart County.
3. Do your best to identify them through the app and add them to the 'Parks for Pollinators 2020: Elkhart County Parks' project.

Parks for Pollinators BIOBLITZ

Week 4: Sept 26-Oct 2
Insect Inspirations

Let the fun and beauty of insects inspire you to get in touch with your creative side. Whether it is a photo painting, sculpture or sketch, share your creations with us on Facebook or Instagram. #bugmonth2020

See our Facebook page for fun ideas and suggestions!



Building Awareness

THE STAR ROUNDUP

Subscribe to Our Newsletter

THE UNIVERSITY STAR

Wednesday, January 27, 2021

NEWS

LIFE & ARTS

SPORTS

OPINIONS

MULTIMEDIA

PODCASTS

EVENTS

ADVERTISING

PROCRUSTINATION

THE 1% PROJECT

67°

SQUARESPACE

Easily create a beautiful online presence.

Discovery Center boosts monarch conservation efforts through crowd-sourced study

By Lionel Ramos Sep 14, 2020



Participants in the San Marcos Discovery Center's BioBlitz event identify organisms for the month of September. The program uses the app iNaturalist to take pictures of plants and insects which then identifies the species and classifies them as observations.

By Courtney of the San Marcos Discovery Center

As the heat of summer begins to subside, San Marcos residents seeking an outdoor excursion

SQUARESPACE

Start selling now with a Squarespace online store.

1 hr ago

"That was not my intent": Faculty member responds to Lloyd Doggett's claims of suppression

2 hrs ago

Women's basketball to face conference-best Louisiana

New 'BioBlitz' park program aims to record local pollinator species. Here's how you can participate

By Gabrielle Rante September 11, 2020

Share on Facebook

Tweet on Twitter

G+

P

Print

PDF

Email



(WYDaily photo/Adobe)

It's as easy as snapping a picture.


In fact, recording local pollinators species is just that simple.

NEWS 11

LATEST NEWS WEATHER TRAFFIC & GROWTH AROUND CHARLOTTE POLITICS SPORTS OUR JOURNALISTS

WATCH LIVE

COMMUNITY CALENDAR Add An Event to Our Calendar



NEWS 11

Parks for Pollinators Raises Awareness for Declining Population

BY COURTNEY MILLER / ALAMANCE COUNTY
UPDATED 9:00 AM ET SEP 16, 2020 / PUBLISHED 4:38 PM ET SEP 16, 2020

GRAHAM, N.C. — A national campaign to bring awareness to the importance of pollinators has made its way to North Carolina. Pollinators are important for creating biodiversity, as well as growing food.

Graham Recreation and Parks Department is hosting the Parks for Pollinators BioBlitz program for the month of September. Residents across Alamance County can snap photos of different bees, butterflies, and other pollinators. Upload the photos to the iNaturalist app and it will identify exactly what it is.

Brandy McCandless of Graham Recreation and Parks Department says, "Not only are you identifying the bees, you're learning about their habits, how they live, and how to make your home and your backyard more friendly." Other users can comment on the photos, collectively figuring out exactly what type of insect it is. The findings are available to users across the nation, including researchers who can use the information in their research.

McCandless says, "When you have all these people involved, you have so many more snapshots of what we have in our backyard, what we have in our parks that creates the bigger picture."

To find out how you can get involved in the Parks for Pollinators BioBlitz, click here.

YOU MAY ALSO BE INTERESTED IN

Leveraging Results

Parks for Pollinators 2020: San Marcos
SEP 1, 2020 - SEP 30, 2020


new using the iNaturalist app. With the iNaturalist app, you just take a picture of a plant. [Read More...](#)

[Join Your Membership](#)

[Join 148 Project](#)

[Project Interest](#)

Overview 1,253 OBSERVATIONS 459 SPECIES 199 IDENTIFIERS 110 OBSERVERS [Stats](#)

 2 observations Lindeheimer's Sonch <i>Sonch oleraceus</i>	 2 observations Crummond's Woodcreeper <i>Crummondia woodcreeper</i>	 1 observation Silverleaf Nightshade <i>Solanum elaeagnifolium</i>	 1 observation Turk's Cap <i>Adiantum album</i>	 1 observation Texas Kidneywood <i>Fraxinella texana</i>
 11 observations Buffalo-Bur <i>Solanum elaeagnifolium</i>	 1 observation Tropical Sage <i>Salvia rooseana</i>	 11 observations Agave <i>Agave attenuata</i>	 1 observation Common Lantana <i>Lantana camara</i>	 1 observation American Trumpet Vine <i>Campsis radicans</i>
 1 observation Meadow Blue Sage <i>Salvia serotina</i>	 1 observation Prairie Fire <i>Castilleja miniata</i>	 1 observation Chico Mountains Fabac <i>Chico Mountains Fabac</i>	 1 observation Texas Lantana <i>Lantana camara</i>	 1 observation Texas Creeper-Cherry <i>Rhus copallina</i>
 1 observation Western Honey Bee <i>Apis mellifera</i>	 1 observation American Snout <i>Agrotis americana</i>	 1 observation Evergreen Sumac <i>Rhus glabra</i>	 1 observation Basil <i>Ocimum basilicum</i>	 1 observation Texas Indian Mallow <i>Althaea rosea</i>
 1 observation Violet Basil <i>Althaea rosea</i>	 1 observation American Beautyberry <i>Callicarpa americana</i>	 1 observation Mexican Palo Verde <i>Leucaena acuminata</i>	 1 observation Balkan Vine <i>Clematis vitalba</i>	 1 observation Straggler Daisy <i>Leucanthemum vulgare</i>
 1 observation Red flower <i>Red flower</i>	 1 observation Pink flower <i>Pink flower</i>	 1 observation Yellow flower <i>Yellow flower</i>	 1 observation Pink flower <i>Pink flower</i>	 1 observation Purple flower <i>Purple flower</i>

Building Your Plan

Your community can support pollinators by making your best effort to:

- Plant a variety of pollinator-friendly flowers that bloom from spring through fall. Grow as many native plants as possible (especially milkweed)!
- Don't tidy up and leave the leaves! Allow natural sites to allow for nesting areas for pollinators
- Avoid using insecticides and herbicides, which may kill pollinators or the plants they rely on. Try an integrated pest management (IPM) or the organic land management (OLM) approach.
- Educate your community on steps they take to help pollinators.
- Create or update a pollinator protection strategy for your community.

A close-up photograph of a large colony of honeybees on a tree branch. The bees are densely packed on the right side of the frame, with several others scattered along the branch. The background is a soft, out-of-focus green, suggesting foliage. The top of the image has a horizontal bar with green, blue, and red segments.

Thank you!

Michele White, CAE, IOM
Conservation Program Manager
mwhite@nrpa.org

www.nrpa.org

