

FORESTRY

Notes

CALIFORNIA DISTRICTS ENHANCE FOREST HEALTH & FIRE RESILIENCE

Nov 30, 2023



In response to the devastating wildfires that swept through California's North Bay Counties in October 2017, local partners, including the **Napa Resource Conservation District (RCD)**, created the [North Bay Forest Improvement Program \(NBFIP\)](#). The NBFIP is a collaboration between Napa RCD, **Mendocino RCD**, and **Sonoma RCD**, along with the Clear Lake Environmental Research Center (CLERC) and Rebuild North Bay Foundation. This program targets private non-industrial small forestland owners and managers, covering parcels ranging from 5 to 500 acres. Its primary goal is to incentivize non-commercial forest improvement activities to promote forest health and wildfire resilience, such as thinning, planting, pruning, and fuel hazard reduction. The NBFIP draws inspiration from CAL FIRE's California Forest Improvement Program (CFIP) and the Natural Resources Conservation Service's (NRCS) Environmental Quality Incentives Program (EQIP), with the goal of creating a regionally appropriate, accessible, and nimble program to support private forested landowners and land managers.

In 2020, NBFIP secured a \$1.5 million grant from CAL FIRE's Proposition 68, providing a three-year funding base. The program received further financial backing in 2022 through a block grant from CAL FIRE's Wildfire & Forest Resilience Task Force's Small Private Landowner Working Group, highlighting the recognition of NBFIP's success in addressing wildfire risk and enhancing forest health. The NBFIP partnership commits to supporting at least 100

Forestry News & Resources

[Protecting PA: County Conservation Districts](#)

[Modoc RCD helping to protect forests, communities](#)

[Southern Rhode Island Conservation Climate Smart Forestry Tour](#)

[\\$5 Million Headed to Hawai'i to Enhance Forests](#)

[Texas A&M Forest Service Celebrates Texas Arbor Day With School Presentations, Tree Plantings](#)

[Mitigating Oak Decline in Michigan](#)

[Wildfire Preparedness Is Year-Round: Don't Fall Behind](#)

Tree Equity, a Climate Solution for Cities

Last year saw a \$1.5 billion investment for urban trees in the Inflation Reduction Act, delivered through the U.S. Forest Service's Urban and Community Forestry Program.

The new funding is being explicitly focused to address a systemic lack of tree cover in lower income neighborhoods and communities of color that makes these parts of our cities

projects across Sonoma, Mendocino, Napa, and Lake Counties, treating over 1,500 acres of land. The range of treatments includes planting site preparation, tree planting and protection, forest thinning, pruning, and woody fuels reduction.

Additionally, the program aims to facilitate the creation of 40 forest management plans to guide sustainable forest practices.



The collaborative structure and efficiency of scale achieved through partnerships with neighboring RCDs have proven instrumental in navigating challenges and maximizing the impact of fire management activities.

Napa RCD's involvement in the region extends to the Department of Conservation's [Regional Forest and Fire Capacity Program](#), where it serves as the block grant administrator, overseeing a collaborative effort that includes Napa, Clear Lake Environmental Research Center (CLERC) and four [other counties including their associated resource conservation districts—Colusa, Solano, Yolo, and a portion of Sonoma](#). The RCDs play a crucial role in day-to-day outreach, technical assistance, and project oversight within their service areas.



The North Bay Forest Improvement Program and Regional Forest and Fire Capacity Program successes underscore the value of sharing experiences, avoiding duplications, and maximizing regional engagement opportunities. Through innovative partnerships, these initiatives not only address wildfire risks but also lay the groundwork for sustainable forest management practices.

As other districts consider similar initiatives, the lessons from Napa RCD emphasize the importance of collaboration, flexibility in funding, and a regionally tailored approach to ensure long-term success in mitigating the impact of wildfires.

To learn more about Napa Resource Conservation District, their regional collaboratives, and ongoing work please visit their website at naparcd.org. Read this full story on [NACD's blog](#).

NATIONAL URBAN & COMMUNITY FORESTRY ADVISORY COUNCIL RECONVENES

Secretary Vilsack has appointed

hotter and more polluted.

American Forests' [Tree Equity Score](#) shows why these funds must be focused through an equity lens. This data-driven analysis of every urban neighborhood across America found that lowest income neighborhoods have on average 26 percent less tree cover and are 7 degrees Fahrenheit hotter, while neighborhoods with the highest concentration of people of color—regardless of income—have on average 38 percent less tree cover and are 10 degrees Fahrenheit hotter. [You can view the Tree Equity Score data for free online and explore more specific results for your city and neighborhoods.](#)

Providing healthy, resilient, and sustained tree cover in priority neighborhoods will also require other aspects of urban forestry, such as watering and pruning trees, clearing invasive vines, protecting trees via enhanced municipal regulations and incentives, and urban wood programs that turn culled wood into long-lived wood products instead of sending that material to a landfill.

You can read the full article [here](#).

U.S. Endowment for Forestry and Communities & New Leaf Climate Partners Release Nursery Landscape Assessment

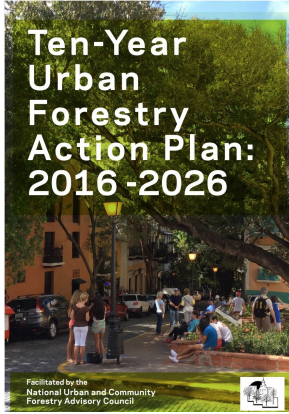
The U.S. Endowment for Forestry and Communities and New Leaf Climate Partners recently released a comprehensive Nursery Landscape Assessment, in an effort to examine the investment needs of tree nurseries to increase their production capacity and meet the growing demand for reforestation.

This research explored the financing challenges that different types of nurseries face and determined investment interventions to unlock capacity.

The Nursery Landscape Assessment report delves into several key topics pertinent to the reforestation supply chain, such as:

new members to the National Urban and Community Forestry Advisory Council. Under direction from Congress, the council oversees the Forest Service's National Urban and Community Forestry Program and provides urban natural resource recommendations to the secretary of Agriculture and other applicable federal agencies.

The National Urban and Community Forestry Advisory Council (NUCFAC) is a Congressionally designated advisory council to the Secretary of Agriculture on urban forestry and related issues.



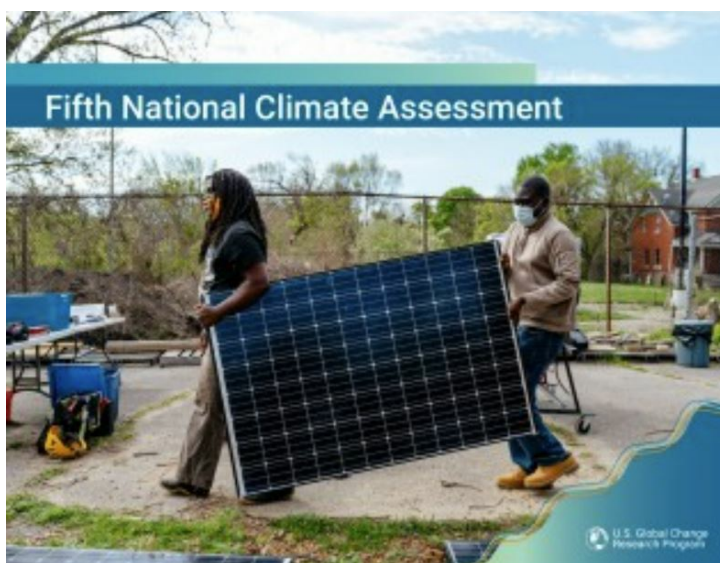
The 1990 Farm Bill created NUCFAC to bring together the wide variety of voices raised about a common concern: the present health and future preservation of America's urban forests. NUCFAC was founded to synthesize the full spectrum of views into a consistent vision, as a foundation for practical policy on urban forestry and related natural resources.

NUCFAC is the steward of the Ten-Year Urban Forest Action Plan. The plan was developed collaboratively with Urban and Community Forestry stakeholders and released in 2016. [See the full plan here.](#)

As part of the development of the Ten-Year Action Plan, a Five-Year Benchmark Accomplishment Report is required to assess the work of the Action Plan that has occurred between 2016 - 2021 and identify key opportunities for the remaining years of the Action Plan. [See the Five-Year Benchmark Accomplishment Report here.](#)

You can read the full announcement of NUCFAC detailing the new appointments [here.](#)

FIFTH NATIONAL CLIMATE ASSESSMENT RELEASED



The [Fifth U.S. National Climate Assessment](#), released this month demonstrates how climate change is affecting America's working lands, how communities are reducing their risks, and how winning solutions to climate change can be found in productive landscapes.

Mandated by the Global Change Research Act of 1990 and

-location distribution
-seedling volume
-forecasted demand, and
workforce issues.

The report also highlights region-specific considerations for those interested in reforestation and restoration initiatives.

The full report can be read [here.](#)

FIA New National Scale Modeling System for Predicting Tree Volume, Biomass, and Carbon

The USFS Forest Inventory and Analysis (FIA) program recently unveiled a new national scale modeling system for predicting tree volume, biomass, and carbon.

Catch this demonstration to learn how changes to the FIA database and analytical tools are applied to individual trees.

SAF's Inventory & Biometrics Working Group is hosting this webinar on December 13 at 2:30 pm ET accessible on ForestEd, which is free for SAF members, and only \$10 for non-members. [Registration details can be found here.](#)

Water Resilience in the Face of Wildfire Risks

Evidence of catastrophic wildfire impacts to water supply systems has been increasingly clear in recent years.

In California, the 2017 Tubbs Fire and 2018 Camp Fire led to drinking water contamination related to water impacts from and to the water distribution networks in communities impacted by the fires.

In Colorado, even more than a decade after the 2002 Hayman Fire, the water quality impacts from the fire are still persisting, presenting drinking water treatment challenges. Wildfires are now impacting every aspect of our water supply systems including water quality and quantity in the headwaters; storage, conveyance, and distribution

produced approximately every four years, the U.S. National Climate Assessment provides authoritative scientific information about climate change risks, impacts, and responses in the U.S. Climate change is affecting agriculture, forests, rural communities, water, and natural resources across the U.S., and will continue to over the next century through changing temperatures, precipitation patterns, drought, flooding, and increasingly more severe extreme events, such as wildfires.

The forestry chapter of the report focuses on how forests in the U.S. are increasingly affected by continued warming, changing precipitation patterns, and disturbances associated with climate change, such as wildfires and diseases and how these changes are limiting the capacity of forest ecosystems to store carbon, provide clean water and air, produce timber and other products, and offer opportunities for recreation. Improved adaptation efforts can help maintain resilient forest ecosystems.

You can read the forestry chapters [here](#), or access the full assessment [here](#).



HEIRS' PROPERTY EDUCATION INITIATIVE IN NORTH CAROLINA



NORTH CAROLINA AGRICULTURAL AND TECHNICAL STATE UNIVERSITY

North Carolina Agricultural & Technical State University, in collaboration with North Carolina State University, is leading an [educational initiative to address issues related to heirs' property](#)—land passed down through families without wills or probate court determinations. Heirs' property poses challenges such as hindering land sales, borrowing, and qualification for federal farm loans.

This platform will provide educational training, outreach, materials, and resources regarding heirs' property issues to help property owners protect and preserve land in North Carolina that their families have held for generations. The initiative aims to provide educational training, outreach, and resources to property owners, particularly in vulnerable communities, helping them protect and preserve their land.

Heirs' property owners are especially vulnerable to losing their land because they are subject to partition actions to physically divide or sell the land. This project marks the first time that North Carolina Agricultural & Technical State University and North Carolina State University — North Carolina's two land-grant universities — have collaborated on a project to educate the public about heirs' property.

networks; and water treatment systems.

Research into these impacts and possible responses has grown substantially in recent years, but our understanding of wildfire-water interactions is still incomplete and ever-changing.

The result is a new paper published in Science Advances where the team reviewed over 200 papers and reports focusing on the nexus of wildfires and water. The review was structured to investigate wildfire impacts on three aspects of water supply systems: water quality, water quantity, and water infrastructure.

You can read the full report [here](#).

CALENDAR

Dec 4-8, 2023 [10th International Fire Conference](#) | Monterey, CA

Feb 6-8, 2023 [SAF Rising Professionals Conference](#) | Baton Rouge, LA

Feb 10-14, 2024 [NACD Annual Meeting](#) | San Diego, CA

Feb 20-22, 2024 [18th North American Agroforestry Conference \(NAAC\)](#) | Turrialba, Costa Rica

< > This Month June 2023 -

SUN	MON	TUE	WED	THU	FRI	SAT
28	29	30	31	1	2	3
4	5	6	7	8	9	10
11	12	13	14	15	16	17
18	19	20	21	22	23	24
25	26	27	28	29	30	1

[Submit an event](#)

Add your conservation district's tree sale, state association meeting, field day or celebration to NACD's calendar!

Click the button above to submit an event. Events will be reviewed by the website

Estimated Total Acres of Heirs Property

STATE	IDENTIFIED PROPERTIES	ACRES SUM	TOTAL MARKET VALUE (2019 DOLLARS)
Alabama	41,218	486,674.60	2,947,571,329
Florida	62,012	188,166.37	5,207,269,458
Georgia	39,430	480,610.22	3,826,323,840
Kentucky	21,482	552,819.57	1,004,878,195
Louisiana	34,197	511,227.93	964,061,998
Mississippi	45,574	760,470.46	1,240,342,106
North Carolina	88,339	537,224.32	8,847,215,298
South Carolina	41,584	414,784.00	3,042,757,968
Tennessee	43,512	516,957.78	5,515,654,399
Virginia	55,404	513,214.94	8,086,128,465
West Virginia	24,242	366,233.01	1,192,175,296
Total	496,994	5,308,374	41,874,378,352

Source: Adopted from 'Identifying Heirs' Property: Extent and Value Across the South and Appalachia; by Ryan Thomson and Conner Bailey (Auburn University)

The project, funded by the [USDA-Risk Management Agency](#), involves in-person summits and workshops covering the history of heirs' property, estate planning, legal strategies, and connecting participants with resources.

The project team includes experts from both universities and aims to raise awareness and empower property owners to address heirs' property issues effectively.

To see the full overview of the summit, the presenters, and associated resources please visit [here](#). Registration information can be found [here](#).

administrator and published to [NACD's online calendar](#) when approved.



www.nacdnet.org